

WEATHER

	Max.	Min.	Precip.
Thursday, April 24	49	34	0.32
Friday, April 25	53	32	0.00
Saturday, April 26	56	33	Trace
Sunday, April 27	54	42	0.81
Monday, April 28	54	43	0.06
Tuesday, April 29	57	40	0.13
Wednesday, April 30	63	41	Trace

The Chelsea Standard

QUOTE

"Laughter is not at all a bad beginning for a friendship, and it is far the best ending for one."
—Oscar Wilde.

ONE HUNDRED-TENTH YEAR—No. 47 18 Pages This Week

CHELSEA, MICHIGAN, THURSDAY, MAY 1, 1980

USPS 101-720

25c per copy

SUBSCRIPTION: \$8.00 PER YEAR

Dinner, Choir Concert Set By Methodists

Chancel Choir of the First United Methodist church, 128 Park St., is presenting a dinner and choir concert this Friday, May 2, in an effort to raise money for new chairs for the chancel area and new choir robes.

At 6:30 p.m. a candlelight gourmet dinner will be served in the Social Center. Cost of the dinner is \$10 per person, which covers the dinner only. Questions regarding reservations will be answered by Mary Harris or the church office.

At 8 p.m. the Chancel Choir will be in concert in the sanctuary. Donation for the concert is left to the generosity of the concert goer.

Details are also being worked out for a babysitting service during the program.

Any questions may be directed to co-chairpersons June Warren and Donna Palmer, to any member of the choir or to the church office.

Trinkle Barn Dance Set June 21

It's almost time to polish up the dancing shoes once again, as the Trinkle Barn Dance Committee has announced this year's "Old Fashioned Barn Dance" will be held June 21.

Location is the Charles Trinkle farm, 9631 Trinkle Rd., and music, as in the past, will be provided by the Luke Schaible Band.

Sponsors will be the Lima Liberty Belles and the Lima Bruskateers. All proceeds will go to Special Education in the Chelsea and Dexter schools.

Tickets will be available for advance purchase at a number of area businesses.

Rec. Council Extends Registration

Chelsea Recreation Council has extended registration for the new boys Connie Mack League and the new girls Senior Miss Travel Softball League through this Friday, May 2, at noon.

Connie Mack is a baseball league for boys aged 16 through 18 and the Senior Miss Travel League is fast-pitch softball for girls 14 and 15.

Anyone wanting to register for these programs may do so today and tomorrow, by calling 475-9131, ext. 64. This phone will be staffed only from 8 a.m. to 12 noon, so registration may only be done in the morning.

Also, the council is looking for two directors: one for the Connie Mack and Babe Ruth leagues and another for the men's softball league. For information, call the Recreation Office at 475-9131, ext. 64.



SHOT STARS: Field coach Bert Kruse looks on as star shotputters Lorrie Vandegrift, left, and Mary Boylan demonstrate their form. In spite of a loss to the Dexter team Friday, the shot put was a bright spot for the Bulldogs. Vandegrift took the event with a personal best of 33'1", and Boylan was second. Sue Branham took third, to make the Chelsea shot sweep complete.



HURDLES are no obstacles for these Chelsea trackwomen as they take them with ease during practice. Taking the leap are, from left, Tracy Bohlender, Marleen Williams, Sue Branham and Lorrie Vandegrift. This year's team is a versatile one. Branham and Vandegrift are also shotputters and Bohlender competes in the high jump. Coaching the squad are Bill Bainton and Bert Kruse.

Baseball Team Hurt By Mistakes

Untimely errors, small mistakes and a lack of power hitting continued to plague the varsity diamondmen this week, as they fell to a powerful Dexter team Friday, 3-1.

"We haven't come up with the big hit when we need it," explained Coach Wayne Welton. "All our

games have been close and we've had a chance to win all of them. There's no big problem, just one little thing different every game."

Dexter drew first blood in the contest, scoring in the first inning on a walk, a double and two more (Continued on page seven)

Boys Track Team Bests Manchester

Chelsea's varsity trackmen raced to a romp over Manchester in non-league competition last Tuesday, 93-39.

Chelsea was led by three double winners, including Bob Ball who won the shot put (50'4") and discus (134'11"); Ken Bauer who triumphed in the 400 yard dash (:56.4) and 220 yard dash (:24.1); and Phil Hoffman who was victorious in the one mile run (4:58) and the 800-yard run (2:12).

Other Chelsea placers included the following:

Bill Freeman, 3rd, shotput (38'11"), and 3rd, discus (111'1"); Toby Boyd, 1st, long jump (18'2") and 2nd, 220-yard dash (:24.3); Dave Nicola, 2nd, long jump (17'11"); Daren Pierson, 2nd, high jump (5'10") and 3rd, 330 low hurdles (:44.7).

Also placing for Chelsea were Darrow Keezer, 3rd, high jump

(5'8"); Dave Wojcicki, 2nd, pole vault (9'3") and 3rd, 100-yard dash (:10.6); Doug Hendricks, 3rd, pole vault (8'9"); Matt McCallum, 1st, 120 high hurdles (:17.1); Mark Stevenson, 2nd, 120 high hurdles (:18.1) and 1st, 330 low hurdles (:43.7); Ken Bauer, (Continued on page seven)

Electors Okay Request for Extra Millage

Concerned with the fate of music, sports and all extra-curricular activities in local schools, Chelsea school district voters approved a millage increase last Wednesday by a 1,375 to 1,165 margin. Fifteen ballots were invalid and one was spoiled.

The 2,556 votes exceeded the total votes cast in last year's two unsuccessful millage elections combined. The school district estimates about 4,700 residents are eligible to vote.

Wednesday's election came in the wake of a school board decision to cut some \$470,000 from the upcoming budget should the bid for the 3.2 additional mills fail. School sports, band and orchestra, and all extra-curricular activities, as well as a number of staff members, would have been casualties of a severely reduced budget.

"It means that the residents of this district prize education," said Superintendent Raymond Van Meer of the election result. "There are economic uncertainties that we're currently in, but people were able to overcome that and register more positive votes."

Included in the "economic uncertainties" are some 200 employees of the local Chrysler Proving Grounds, who received indefinite lay-off notices effective April 25 just before last week's election.

Van Meer said he felt the millage passed because the community perceived that the school district acted responsibly after two millage failures last year.

"Last year, we said 'We hear you and we're going to reduce board expenditures,'" Van Meer said. "This year the needs didn't go away."

He attributed the successful outcome to the Citizens Committee and to committed school district residents who tirelessly talked to people about the issues involved.

"We tried to get as much information before all the district residents as we could," he said, "through our paper, the local paper and meetings. We knew we could stand the scrutiny on the budget."

To many, Van Meer continued, that scrutiny revealed that the board had acquitted itself well last year in shearing some \$143,305 from the budget after millage failures and expending a cash balance of \$74,413 that had accrued for three years.

"With all of these things combined," Van Meer said, "the end result is that the citizens do prize education. At this dismal period of time, with inflation, new assessments, job uncertainty, our needs were there and the people responded."

"A cohesive spirit prevails after something like this happens."

The school board will now begin to work on a tentative budget for the upcoming year, said Van Meer, and should have some definite figures this month. The 1980-81 budget will not be finalized until October, after the annual first Friday count is taken and enrollment figures are determined.

Dexter Girls Get Revenge in Track

A fired-up Dexter team, perhaps still smarting from finishing fifth in the Chelsea Relays, burned up the track with outstanding performances and defeated Chelsea's girls track team, 71-52, in a Friday dual meet.

Although winning only four first places, the Bulldogs kept the meet close until the final two events.

Dexter's strength in the distances ultimately was the difference in the meet. Teresa Hoffman's senior record in the mile and Sandy Frame's best time in the two-mile were only good enough for thirds behind Dexter's Lisa Goltman and Cheri Sly, who ran one-two in both events.

Sly set a Dexter record in the two-mile, one of two set by the Dreadnaughts in the meet.

Chelsea's victories came in the shot put, as Lorrie Vandegrift threw a personal best of 33'1". Mary Boylan was second and Sue Branham, third, for a Bulldog sweep.

Tracy Bohlender won the high jump, beating Lorrie Vandegrift and Dexter's Nancy Darlington (Continued on page four)

Drug Awareness Program Slated By Chief Aeillo

Chelsea Police Chief Robert Aeillo will once again present a drug awareness program for adults, sponsored by area businesses and the police department.

The presentation, open to the public, will be given Wednesday, May 7, at 7 p.m. in the community room of the Ann Arbor Trust Co. on M-52. Chief Aeillo asks that interested persons call the police station at 475-9122 and indicate that they are planning to attend.

This drug seminar has already been presented to the VFW and Kiwanis Club, and will be given to the Lions Club and Lioness Club in the near future.



ONE MAC TO GO: Bill Bott (in apron), manager of the Chelsea Branch of Ann Arbor Trust Co., grilled a stack of Big Macs at the local McDonald's last Sunday, under the watchful supervision of owner Al Felthauer. In celebration of its 25th anniversary, each McDonald's restaurant participated in a program whereby 25 cents from each Big Mac sold Sunday was donated to the Ronald McDonald House — a house near Detroit Children's Hospital for parents of hospitalized youngsters

Refuse Charge Increased for Village Residents

Residential customers will be paying one dollar more per month refuse charge beginning with the May utility bill, the village has announced.

According to Village Administrator Fritz Weber, the increase from \$2 to \$3 per month is necessary because a number of provisions of a state Solid Waste Act go into effect this fiscal year.

These provisions are quite stringent, said Weber, and require the village to do a number of things at the landfill that were not mandatory before. The Solid Waste Act was passed in 1978 to protect the environment.



RETIRES HONORED: Three employees of Rockwell International, Chelsea Division, were honored with a retirement dinner at the Knights of Columbus Hall, April 18. Receiving recognition were, seated from left, Phillip Kunzelman, 33 years, supervisor shipping-receiving; Erma Holtz, 32 years, senior clerk receptionist; and Robert Rudd, 37 years, manufacturing manager. In attendance to celebrate the trio's retirement were, standing at left, Thomas Richardson, vice-president and general manager, Suspension Components Division; and Robert Schach, Chelsea Plant Manager. A number of past retirees were also in attendance.

The Chelsea Standard
 Walter P. Leonard, Editor and Publisher
 Excellence Award By Michigan Press Association
 1951-1952-1960-1964-1965-1966

Published every Thursday morning at 300 North Main Street, Chelsea, Mich. 48118, and second class postage paid at Chelsea, Mich., under the Act of March 3, 1879.

Subscription Rates (Payable in Advance)

In Michigan:		Outside Michigan:	
Six Months	\$4.50	Six Months	\$ 5.50
One Year	\$8.00	One Year	\$10.50
Single Copies	\$.25	Single Copies	\$.30

MEMBER
NATIONAL NEWSPAPER ASSOCIATION
 Founded 1888

National Advertising Representative:
MICHIGAN NEWSPAPERS, INC.
 257 Michigan Ave.
 East Lansing, Mich. 48823

JUST REMINISCING
 Items taken from the files of The Chelsea Standard

4 Years Ago . . . 24 Years Ago . . .

Thursday, May 6, 1976—

Saturday, May 1, the Chelsea High School Symphony Band took top honors at the State Band and Orchestra Festival, held at Fenton High school.

Two dances will be held in Chelsea this Friday as part of local Bicentennial celebrations, one at Chelsea High school and the other at the fairgrounds.

McKune Memorial Library is one of eight homes to be featured in the Chelsea Area Historical Society's "Once Upon A Time" house tour.

Nancy Porath has received notice that her class' newspaper, a weekly called "The Room 204 Classroom Enterprise," has won \$20 from the New Readers National Press of New York. The paper is produced completely by the students in her special education class.

14 Years Ago . . .

Thursday, May 12, 1966—

Carol Cameron, daughter of Chelsea School Superintendent and Mrs. Cameron of Freer Rd., has been elected a member of the Kalamazoo College chapter of Phi Beta Kappa.

Duane Rowe has been appointed to a nine-member state advisory board for the registration of water well drillers. The appointment was made by Gov. George Romney.

The State Tenure Commission in Lansing announced last week that the case of Mrs. Barbara Segal had been dropped following the receipt of a letter from Mrs. Segal stating that she was resigning her position at South Elementary school.

The Rev. Fr. Francis Maliszewski will be honored at a reception commemorating 25 years in the priesthood at a reception June 12.

The Chelsea Education Association and the Chelsea Board of Education negotiation committees reached an agreement Monday evening on a three-year master contract.

Advertising revenue pays for costs of producing The Standard. Let the merchant know you appreciate it.

Howell Livestock Auction

Starts 1 p.m. Every Monday
 Mason 676-3400
 The Wise Owl Says Ship to Howell
 Ph. (517) 541-3100 Bim Franklin
 Hog Sale every Wed'y 9 a.m.

Market Report for April 28

CATTLE
 Bulk Gr.-Choice Steers, \$63 to \$65
 Few High Choice Steers, \$65-\$66
 Gr.-Choice Heifers, \$59 to \$65
 Fed Holstein Steers, \$55 to \$60
 Ut.-Std., \$54 and down.

COWS
 Heifer Cows, \$50 to \$52
 Ut.-Commercial, \$45 to \$50
 Canner-Cutter, \$42 to \$48
 Fat Beef Cows, \$44 to \$47

BULLS
 Heavy Bologna, \$60 to \$64
 Light and Common, \$59 and down.

FEEDERS
 400-600 lb. Good-Choice Steers, \$70 to \$80
 600-800 lb. Good-Choice Steers, \$60 to \$70
 300-600 lb. Good-Choice Heifers, \$62 to \$70
 300-500 lb. Holstein Steers, \$65 to \$75
 500-800 lb. Holstein Steers, \$55 to \$65

CALVES
 Prime, \$85 to \$105
 Good-Choice, \$80 to \$95
 Heavy Deacons, \$80 to \$100
 Cull & Med., \$50 to \$60
 Calves going back to the farm sold up to \$285

SHEEP
 Choice-Prime, \$58 to \$60
 Good-Utility, \$55 to \$58
 Slaughter Ewes, \$35 to \$25
 Feeder Lambs, all weights, \$60-\$70

HOGS (quotable)
 210 to 240 lbs., No. 1, \$30 to \$31.25
 200-250 lbs., No. 2, \$28 to \$30
 Heavy Hogs, 250 lbs. up, \$24-\$26
 Light Hogs, 100 lbs. down, \$20-\$26

Sows (quotable)
 Fafey Light, \$24 to \$26
 300-500 lbs., \$25 to \$26
 500 lbs. and up, \$26 to \$27

Boars and Stags (quotable)
 All Weights, \$23 to \$25

Feeder Pig:
 Per Head, \$20 to \$40
 Est. 40 lb. pigs, \$25 to \$30

HAY
 1st Cutting, per bale, 30c to \$1.00
 2nd Cutting, per bale, 75c to \$1.50

STRAW
 Per Bale, 50c to 90c

COWS (quotable)
 Tested Dairy Cows, \$800 to \$1,200
 Tested Beef Type Cows, \$550-\$650

★ **MICHIGAN MIRROR** ★
 By Warren M. Hoyt, Secretary, Michigan Press Association

Scramble on for Tax Shift Plan
 Legislative leaders and the governor are searching for the right combination to shift taxpayers' liability away from the property tax system with the lost revenue—estimated at around \$500 million—to be picked up by either an increase in the state income tax or sales tax rate.

This is not being done out of the goodness of their hearts but it is a conscious effort to short circuit the Tisch property tax cut ballot question of 1980.

Homeowners, continuing to feel the squeeze of escalating property taxes, are probably ready to vote for the Tisch plan this year after opting for a less radical approach at the 1978 election.

At that time, voters selected the less radical tax limitation constitutional amendment in hopes it would put the brakes on soaring property taxes and government spending.

However, after nearly two years, that amendment has done little in providing relief for individual taxpayers.

Petitions are now being circulated again to get the Tisch property tax cut back on the ballot—an action expected to succeed without question.

The proposal is simple. It slices property taxes in half and prohibits state government from taking any action to recoup the lost revenues.

Feeling the mood of the voter, legislative leaders and the governor have been meeting to try to reach a middle ground and put forth a proposal the voters would adopt over the tax cut plan.

Citing already shrinking revenues as a result of the hard-hit automobile industry in Michigan, government officials say basic human services cannot be met with such a radical cut in state revenues.

In order to soften the blow on property owners, several tax shift plans have been proposed. Simply put, they would give individual taxpayers a break of around \$500 per year on their property tax bills, but the lost revenue would be shifted to the income tax rate or to the sales tax.

The legislature will soon put on a push for the adoption of a proposed constitutional amendment to get the question on the ballot in direct competition with the Tisch tax cut proposal.

After getting the question on the ballot, state officials will be covering the state with a concentrated personal and media blitz promoting the plan as a responsible alternative to the Tisch plan.

In Michigan, this campaign will overshadow any other question on the ballot or any race including the presidency.

Not only will voters be voting for either the tax shift plan or the

tax cut proposal, but a more crucial question may be answered in November voting on the issue.

This is the basic question of confidence in public officials who will be proposing the shift in light of the state's revenue problems or those advocating a tax cut putting forth the argument of too much government and it is time the people take control through the election process.

Boy Scouts Test Skills in Wilderness

Boy Scouts of Chelsea's Troop 425 spent the week-end of April 26-27 testing their skills against the wilderness in a survival camp-out.

Thirteen boys and three scoutmasters made their own survival kits and carried them three miles to the campsite. Scouts were required to demonstrate the construction of a rustic shelter from natural materials and equipment from the survival kits.

Next, the scouts had to make a rustic food storage platform, after which they turned their attention to the making of hand-made utensils for cooking supper. Each boy had a half-pound of hamburger with just hand-made utensils and flint and steel to start a fire.

Overnight sleeping in the shelters was required, and the mercury dipped to a chilly 45 degrees during the night.

Participating were scouts Allen Cole, Ricky Cook, Jim Cook, Kevin Gross, Guy Gross, Doug Jankuski, Eric Owens, Mark Porath, Robert Polens, Brian O'Toole, Eric Stofflet, Dennis Parsho, Tim Weir and Scoutmaster Richard Cook.

Telephone your club news: to 475-1371

Swine Club Schedules Meetings

The Swine Club will meet Tuesday, April 29, 8 p.m. at the fairgrounds.

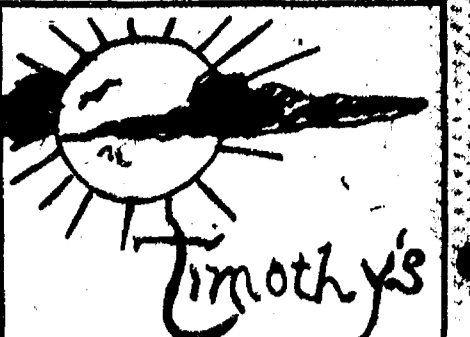
Weigh-in for swine has been set for Saturday, May 3, from 1:30 to 3:30 p.m.

Other meeting dates for the club will be May 27, 8 p.m.; June 24, 8 p.m.; July 15, 7:30 p.m.; and Aug. 3, 1 p.m.

Club officers are Leonard McCalla, president; Jeff Osentoski, vice-president; Lucy McCalla, secretary; and Neil Koch, treasurer.

Subscribe today to The Standard.

Please Notify Us In Advance of Any Change in Address



professional touch without the cost
 catering - barbecues - private parties
 50 - 500
 Jim Orbring 475-2570

The Chelsea Woodshed Presents:

All You Can Eat Specials

Monday — Steamed Alaskan Crab Legs
 Served with green salad & shed fries
 \$9.25 per person

Tuesday — Deep Fried Battered Chicken
 Served with green salad & shed fries
 \$5.50 per person

Wednesday — Ocean Fresh Battered Fish
 Served with green salad & shed fries
 \$5.75 per person

Specials Available 5 p.m. to 10 p.m.



CHELSEA WOODSHED EATERY

113 S. Main
 Chelsea, Michigan
 (Just 15 minutes from Ann Arbor)
 Call 475-1922

Monday — Thursday 7-10
 Friday and Saturday 7-11
 Closed Sundays

VISA MASTERCARD Discover Cards Welcome

Uncle Lew from Lima Says:

DEAR MISTER EDITOR:

The fellers were lamenting the state of the political world Saturday night at the country store.

Natural, Democrat Clem Webster and Republican Ed Doolittle drewed battle lines right off the bat, but most of em couldn't decide which side to come down on.

Ed said he never knowed a time short of war when this country had so many problems and so few remedies, and the biggest problem is a President that thinks leadership is setting in the rose garden and looking at the world through rose colored glasses.

Clem come right back that never in the history of this republic have so many had so much to gripe about and so few ideas on what to do different. All the politicians barking at Carter's heels remind him of the two soldiers in the foxhole.

Clem declared: One of em kept grumbling about the water in the bottom, the mud at the top, the noise all around. Final, his buddy told him if he knowed of a better hole, go git in it.

Clem was of a mind that the President and country is showing the kind of patience with Iran the world ought to use fer an example of how to keep peace, and that the Olympic committee being with him on not playing Russian games this summer ought to bring more countries around to the Carter Administration's thinking.

Clem said we can't go on doing business as usual with the Russians that would like nothing better than to drive us out of the Middle East, and we can't think of military action in Iran until hope for all other ways is lost.

Ed felt just as strong that we had turned the other cheek so much we are raw on both sides, and that he was ready to try Senator Goldwater's plan of giving them 72 hours to let our people go or one of their oil refineries will sudden disappear.

Zeke Grubb said after all is said and done on both sides, a heap more is said than done. He declared that Carter reacts instead of acts, but Kennedy's way to fix the economy would be to drain the federal treasury in about three weeks.

Zeke said he listened to reporters question Reagan at a airport the other day, and ever time one of them would ask him the time he'd tell them how to make a watch. All of it reminded Zeke of a story Oklahoma Senator Kerr like to tell. Two Shawnees listened to hours of hot and heavy oratory at a political rally. Final, when the

last of the long winded bunch set down, one Indian said to the other, "much fertilizer, no crop."

Practical speaking, Bug Hookum said, it's better to do nothing than what some politicians do. Bug had saw where Senator Proxmire has earned his own Golden Fleece Award fer saying a scientist made monkeys out of taxpayers by spending \$500,000 to find out why monkeys clench their fists.

The researcher sued, and Proxmire apologized to the doctor, but not to the taxpayers that picked up a \$124,351 bill fer legal fees to defend him against the lawsuit.

Personal, Mister Editor, I'm with Bug. North Carolina would of done better to skip her 1979 state Government directory. It come out last month and the 1980 book is due out this month.

Yours truly,
 Urtele Lew.

BRIDGEWATER HARDWOODS
 12 Species - Kiln Dried
 Random-width Flooring - Paneling - Fireplace Mantles
 Ph. 429-1005

MOTHER MOM MOMMY MOTHER MOM

GIFTS FOR MOM

SPECIALS - Now thru May 10

WOMEN'S & JUNIORS
EARLY SPRING CO-ORDINATES
 1/3 Off

WOMEN'S
SUMMER SLEEPWEAR
 Pajamas - Gowns - Robes
25% Off

LEVI'S

BENDOVERS Reg. \$22 to \$27 **\$19.99**
SPECIAL BLOUSES Reg. \$19.00 **\$13.88**
SPECIAL T-SHIRTS Reg. \$9.00 **\$6.88**

Make Mom Happy with a Gift from

DANCER'S
 Chelsea's Friendly Dept. Store

MOTHER MOM MOMMY MOTHER MOM

OPEN SUNDAYS
 10 a.m. to 2 p.m.
 MAIN STORE ONLY
 1414 S. MAIN ST., CHELSEA
 Phone 475-9106

The PARTS PEDDLER
 AUTO SUPPLY STORES





Mrs. John M. Tandy, II

Julie Prohaska Inducted into EMU Honor Society

Julie Prohaska, 14580 Stofer Ct., was one of 26 Eastern Michigan University students inducted into Pi Sigma Alpha, the national political science honor society, during a Political Science Honors Banquet held Thursday, April 10.

Sponsored by the American Political Science Association, Pi Sigma Alpha was founded in 1920 for the purposes of stimulating productive scholarship and intelligent interest in the subject of government and of recognizing student attainment of high standards of achievement in political science and all academic work.

Hospital Auxiliary Hears Address On Medication

Chelsea Community Hospital Auxiliary met on Monday, April 21, in the Surgery Waiting Room at Chelsea Community Hospital. Speaker for the evening was Amy McCormick, co-worker of Dr. Lorraine Peters, Chelsea Hospital Pharmacy. Her topic was "Medication Awareness," and a slide presentation was given.

The business meeting, chaired by President Alice Thornton, followed the speaker. Jan Tupper introduced Jane Freeman, new gift shop manager for the hospital. Marge German introduced her two guests, Nancy German Hall and June Winans.

Wednesday, May 7, there will be an auxiliary-sponsored program entitled "Accent on Teens." It will be held free of charge in the hospital dining room at 8 p.m.

The May meeting of the auxiliary will take place on Monday, May 19, 8 p.m., at Chelsea Hospital. Speaker will be Nancy Cooper, special education teacher in Chelsea, talking about the Special Olympics.

Susan Bauer Earns Academic Honors at EMU

Susan K. Bauer, 252 Park St., was honored at the 31st annual Eastern Michigan University College of Business honors banquet, held Thursday, April 17, at Holiday Inn West, Ann Arbor.

Bauer was the recipient of the Vera North Award for excellence in non-degree flexible business program, for having the highest grade point average in 1979, while she was still in the program. She has since opted to continue on to a four-year bachelor of business administration program in legal secretarial studies.

Nearly 400 students were honored at the banquet.

Michigan State University is the largest institution of higher education in Michigan. Enrollment on the East Lansing campus in the fall of 1979 hit a record high of 44,756. Total enrollment, including regional centers and credit extension was 47,350.



TOTH-WILLIAMS: Mr. and Mrs. Steven Toth of Manchester announce the engagement of their daughter, Becky D. Toth, to Dean D. Williams, son of Mr. and Mrs. James Harden of Ann Arbor. The bride will graduate from Manchester High school this spring. She is employed at the Saline Evangelical Home. Her fiancé will graduate from high school this spring and is employed at Toyota of Ann Arbor. A July wedding is planned.

Spring Flower, Antique Show Slated Tonight

This evening, Thursday, May 1, at Chelsea Knights of Columbus Hall on Old US-12, the Business Women's Association of Chelsea will sponsor their annual Spring Flower and Antique Show beginning at 7 o'clock.

Displays at the show will be on sale as will refreshments. There will also be entertainment and door prizes. Tickets may be purchased at the door.

Members of the Business Women's Association urge all to attend their show as all proceeds of this yearly event go to the Chelsea Students Scholarship Fund.

This is just one of the many events that the Business Women's Association of Chelsea sponsors to make money to be used in Chelsea Students Scholarship funds.

The Business Women's Association was formed to further education and cultural development of young ladies. Throughout each year they gather funds to give to scholarship funds.

The Business Women's Association of Chelsea is interested in securing new members and those women interested in joining are urged to inquire of Sharon Roberts, at 475-8348.

GIRL SCOUTS

TROOP 247— Tuesday, April 29, we visited The Chelsea Standard. Mr. and Mrs. Leonard showed us how our paper is printed and gave us pads, pencils and newspapers. Erica Bice brought treats.

Jennifer Bice, scribe.

Approximately 850,000 jobless workers obtained employment and the opportunity to receive paychecks in the 1979 fiscal year in temporary public service jobs under the Comprehensive Employment and Training Act (CETA).



"Blooming Fashion!"

Spring jewelry fashions blossom with the richness of green emeralds, set in 14K yellow gold. She'll love her new heart pendant, created especially for her, by Jewelmont. It's all part of our "Spring Fever" Jewelry... It's all part of today's fashionable look! (18" 14K gold chain included)

DESIGN BY JEWELMONT

WINANS JEWELRY

Campbell-Bollinger Engagement Told

Mr. and Mrs. John B. Campbell of Royal Oak have announced the engagement of their daughter, Karen Lee, to Neil Edward Bollinger, the son of Mr. and Mrs. Lee A. Bollinger of Chelsea.

Miss Campbell is a graduate of Royal Oak Kimball High school and Michigan State University. She is pursuing a master's degree at MSU and is a graduate assistant in the MSU history of art department. She is a member of Gamma Phi Beta social sorority.

Her fiancé was graduated from Chelsea High school and MSU. He expects to receive his doctor of veterinary medicine degree from MSU in June and join a Wisconsin veterinary practice in July. The couple plans a June wedding.

Bailey-Daniels Vows Exchanged

Jacqueline D. Bailey of Ypsilanti and Paul Michael Daniels of Ann Arbor were wed Friday, April 18 in the First Congregational church of Chelsea, with the Rev. Carl Schwarm officiating.

The bride is the daughter of Mr. and Mrs. Dale A. Bailey, 6090 Stofer Ct. Mr. and Mrs. James Daniels, 595 Glazier Rd., are the bridegroom's parents.

Honor attendants at the afternoon ceremony were Candy and Jack Risner of Chelsea, sister and brother-in-law of the bridegroom.

A reception was held at the home of the bride's parents on Stofer Ct.

The couple is residing in Ann Arbor.

Piano Students Present Recital

Piano students of Pat Stirling presented a Spring Music Recital last Sunday, April 27, at St. Paul United Church of Christ.

Performing selections on the piano were Jill Koch, Jennie Ghent, Kim Degener, Maria Gallas, Todd Redding, Karen Grau, Stephen Radant, Lee Kemmish, Norman Weber, Cathy Hoffman, Melanie Dils, Drew Hubal, Chris Rainey, Minta VanReeseema, Dan Degener, Bobby Pratt, Jimmy Schutte, Sarah Noah, Anna Flintoft, Cheryl Martin, Jim Rooke, Amy Dmoch, William VanReeseema, Chris Gallas, Carol Palmer, Juli Pratt, Lee Redding, Kim Collins, Gayla Bauer and Kelli Borton.

Matt Hubal and Jason Schutte each performed a violin solo, then combined for a duet. Russell Harris performed a Vivaldi sonata on the cello.

Correction

An error was made in last week's Standard story on the wedding of Linda McGuire and Michael Bowen.

Best men were Steve Bowen of Chelsea, brother of the bridegroom, and Mike Bauer of Chelsea, brother-in-law of the bride.

According to an Advertising Age survey, 22 of the 25 largest advertising agencies indicated that Michigan State University led the list in the number of 1978 graduates joining one of the agencies.

CAROL'S CUTS

40 CHESTNUT

Monday, Wednesday and Friday

475-7094

Appts. Only 9:30 a.m. - 3:00 p.m.



AUGUSTINE-SCHROTENBOER: Mr. and Mrs. Dale Augustine of 20331 Jerusalem Rd., Chelsea, have announced the engagement of their daughter, Brenda Lee, to Douglas Roy Schrottenboer, son of Mr. and Mrs. Roger Schrottenboer, 17255 Carolina Trace, Chelsea. The bride-elect is a 1976 graduate of Chelsea High school and is a legal secretary, employed by Keusch & Flintoft, attorneys at law. Her fiancé is a 1974 Chelsea High school graduate of Chelsea High school and received a bachelor's degree in architecture from the University of Michigan. He is an assistant manager employed by Tandy Corporation. A July 19 wedding is planned.

SPRING FLOWER AND ANTIQUE SHOW

THURSDAY, MAY 1 - 7 p.m.

at CHELSEA K. OF C. HALL

TICKETS AT THE DOOR

Sponsored By
BUSINESS WOMEN'S ASSOCIATION OF CHELSEA

Proceeds Go to
Chelsea Students Scholarship Fund

DOOR PRIZES - REFRESHMENTS ENTERTAINMENT

We are proud to announce we now feature

PRINCE MATCHABELLI

Wind Song • CACHET
Aviance • AZIZA

All now available at our Cosmetics Counter.

Chelsea Pharmacy, Inc.
101 N. Main—Chelsea
475-9103

WE ARE PLEASED TO ANNOUNCE THAT WE ARE NOW CARRYING

BALI

(the feminine support bra)

VOGEL'S

Diane Drake, John Tandy, II, Wed at North Lake Church

Diane Lynn Drake of Coopersville and John Martin Tandy, II, of Gregory were wed Saturday, April 26 in North Lake United Methodist church before 175 friends and family members. Officiating was the Rev. James Craig, the United Methodist District Supervisor from Flint.

Parents of the bride are Mr. and Mrs. John M. Tandy, 7045 Hankerd Rd., are parents of the bridegroom.

The bride was attired in a floor-length white polyester gown with a sheer overlay and lace at the ruffled neck and cuffs. She wore a Juliet cap with a mid-length veil and carried silk baby's breath and roses with ribbon streamers.

Matron of honor was Mrs. John Hoekstra of Grand Rapids. She wore a baby blue floor-length gown with floral print sheer sleeves and bodice and a ruffled neck line. She carried a fan with silk baby's breath, roses, daisies and forget-me-nots.

Bridesmaids were Mrs. Jack Heimler of Marne and LouAnn Spencer of Grand Rapids, both

friends of the bride. Their gowns and flowers were identical to those of the matron of honor.

Best man was Mark Heydlauff of Chelsea. Ushers were Craig Coltre of Chelsea and Howard Haselschwardt of Butternut, Wis., formerly of Chelsea.

A reception was held at the Inverness Country Club for approximately 175 guests. Following the reception, the couple left on a short wedding trip to Niagara Falls. They will make their home in Dexter.

The bride is a graduate of Grand Valley State College and holds a teaching degree in special education. Her husband is a Michigan State University graduate, currently working as an apprentice electrician for Local 252 in Ann Arbor.

The nearly 1,200 inspectors of the Mine Safety and Health Administration conducted 65,000 inspections and investigations during the 1978 fiscal year at the 6,500 coal mines under MSHA's jurisdiction, according to the department's annual report for fiscal year 1978.

COMING SOON!
FRESHLY BAKED WHITE BREAD
(You can almost smell it!)
GUERNSEY DAIRY MILK - FRESH BROWN EGGS

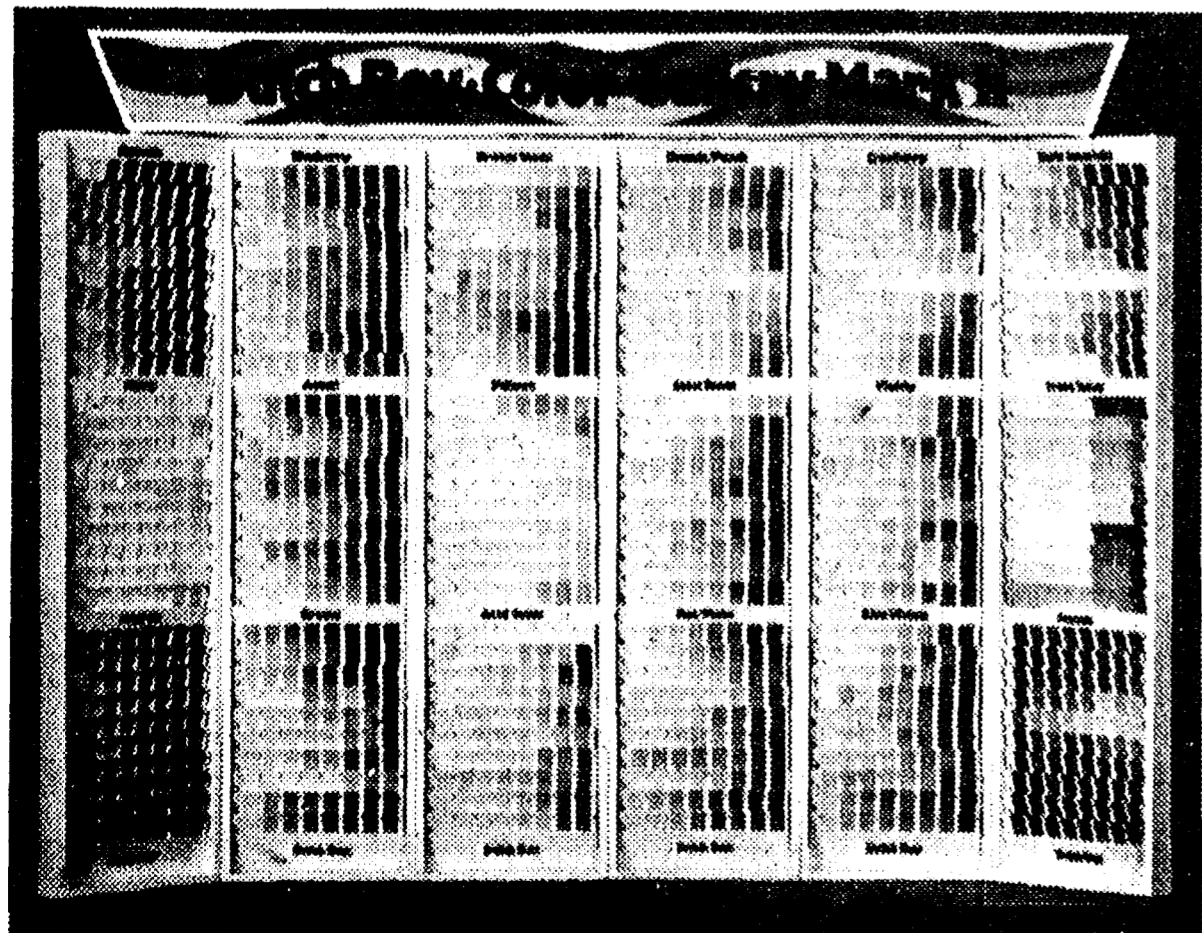


RIVENELL NATURAL FOODS
3212 ALPINE
DEXTER, MICH 48130
426-2549
(Across from the Farmers' Market)

LEAD A MORE COLORFUL LIFE

DUTCH BOY Color Gallery Mark II

AVAILABLE IN 1390 COLORS INTERIOR/EXTERIOR PRODUCTS



MERKEL HOME FURNISHINGS

A most unusual gift...



Bulova LCD Quartz Travel Alarm
\$49.95

It's the tiniest—and most efficient—travel clock you've ever seen. Accurate within 15 seconds a month. It weighs one ounce. Measures 1 3/4" high, 2 1/2" wide, 3/8" slim. Performs beautifully. It keeps hours and minutes in continuous display. Sets to the precise second. Tells A.M./P.M. Operates silently. It has a night light, built-in easel back, "set-and-forget" repeat alarm and travel pouch. And because it looks like jewelry with its black-and-silver-tone or brown-and-gold-tone case, Bulova puts it in a fine jewelry-designed gift box. Get one for yourself. And all your traveling friends. It's a unique and welcome gift.

Winans Jewelry

Let Our Advertisers Know You Read Their Standard Adv.

May Fellowship Day Slated Friday at Zion Lutheran Church

Friday, May 2, Church Women United all over the United States will be celebrating May Fellowship Day. On that day at 12 noon, Church Women United of Chelsea are planning a salad potluck luncheon, followed by a celebration service at Zion Lutheran church. All interested women are invited to join in this day of sharing their faith. Each person is to bring a salad and her own table service. Babysitters will be available. Children should bring their own sack lunch and milk will be provided. "The Spirit of the Lord is Upon

Me" is the theme for May Fellowship Day this year. This is also the theme for the National CWU Assembly this June in Los Angeles. Church Women United has celebrated May Fellowship Day since 1933, when a Dedication Day was planned to bring church women together in their own communities. Celebrated on the first Friday of May each year, May Fellowship Day emphasizes the potential for creative and healing relationships in every community and provides the opportunity to worship ecumenically.

Hospital Auxiliary Will Present Program on Teen Problems

The Chelsea Community Hospital Auxiliary will present a program for the community Wednesday, May 7, entitled "Accent on Teens." The program will feature discussion of sex-education, nutrition, and family-social communications as they relate to teen-agers and their families. The free program is open to teens and adults and will begin at 8 p.m. in the Chelsea Hospital dining room. Dr. Delbert Pearson, a well-respected pediatrician, will present the topic of sex education in the public school system. Dr. Pearson is a graduate of the University of California, Berkeley, school of medicine. He has taught at the University of Michigan Medical School and performed volunteer community service. In addition, Dr. Pearson has helped to plan and initiate a sex education program in the Y-

silanti school system and will outline this program. Julie N. Say, community nutritionist, will discuss nutrition as it relates to teen-age diet and habits. A graduate of Michigan State University and U-M, Say is a registered dietician and is presently employed by Chelsea Community Hospital. Her responsibilities include nutrition counseling and teaching of hospital patients and referred out-patients. She also implements community teaching programs. Jim McGloin is an instructor and the lead social worker in the Department of Family Practice of the U-M Medical School. He has a psychiatric and psychotherapeutic background, with special interest and training in marital and family work. McGloin holds degrees from Notre Dame and U-M, and is presently completing a PhD at the University of Wisconsin. He will discuss teen-age family communication and social interactions. Moderator will be Wyn Schumann of the hospital auxiliary. She is a registered pharmacist employed by St. Joseph Mercy Hospital, is the mother of four teen-agers and is active in many community projects and organizations.

Denise Hafner Receives Masters Degree at EMU

Denise Marie Hafner, daughter of Vincent and Willetta Hafner, 127 Orchard St., received a master of arts degree in secondary school teaching of biology from Eastern Michigan University in commencement exercises April 19. Hafner graduated from Chelsea High school in 1969 and from Olivet College in 1973. She has been teaching in the Detroit Public School system since 1973 and is currently teaching sixth and seventh grade science at Barbour Middle school.

Girls Track Team

(Continued from page one) on fewest misses. All three jumpers cleared 4'8". Barb Davis, Nancy Heller, Kathy Honbaum and Tracy Bohlender combined to win the 880 relay and Debbie Honbaum won the 440. Other Chelsea scorers included Mary Boylan in the discus; Pris Drew in the long jump; Lorrie Vandegriff, Tracy Bohlender and Sue Branham in the hurdles; Debbie and Kathy Honbaum in the sprints; and Teresa Hoffman and Nancy Heller in the 880.

Dial-A-Garden Topics Listed

Dial-A-Garden, the system of pre-recorded daily gardening tips, is sponsored by the Washtenaw County Co-operative Extension Service. The system is in operation 24 hours per day, seven days per week. Interested persons are invited to call 971-1122 at their convenience and receive timely, up-to-date gardening information. Thursday, May 1 - "Protect Your Strawberries From Late Frosts." Friday, May 2 - "Fertilizing Asparagus and Rhubarb." Monday, May 5 - "Planting Balled and Burlapped Nursery Stock." Tuesday, May 6 - "Pruning Spring Flowering Shrubs." Wednesday, May 7 - "Enjoy Rhubarb Now and Next Winter."

THURSDAY SPECIAL FOOT-LONG HOT DOGS and MUG of ROOT BEER \$1.25
Open Daily at 11 a.m.
A & W RESTAURANT
M-52 AND I-94 PH. 475-2055
SAVE TIME - CALL AHEAD FOR CARRY-OUT ORDERS

Wedding Invitations

We invite the bride-to-be to examine our wide selection of socially correct Wedding Invitations and accessory items, in traditional and contemporary styles. Special handling available for fast service.

The Chelsea Standard
PUBLISHERS AND PRINTERS SINCE 1871
300 NORTH MAIN STREET
Phone 475-1371

Senior House Activities

Week of May 5-9
Monday—Cookie bake, 10 a.m. to 2 p.m.; stained glass, 1 p.m.; antique discussion group, 2 p.m.
Tuesday—Kellogg Tour, Battle Creek.
Wednesday—Sewing, 1 p.m.; bowling, 1:30 p.m.; fitness, 1 p.m.; blood pressure, 1 p.m. Mothers Day Cookie Sale.
Thursday—Bridge. Cookie Sale.
Friday—Monthly Birthday Party for May, 1:30 p.m. Everyone welcome!

World Sugar Imports Expected to Increase

World net sugar imports in 1980 will rise to 19.3 million tons, an increase of 1.5 million tons from 1979, according to the International Sugar Organization. The committee estimated net import requirements for the free market trade in sugar at 18.4 million tons in 1981 and 18.5 million tons in 1982. The estimated increase this year is considered to result mainly from the crop problems in the Soviet Union, which have forced the USSR to increase imports. The lower estimates for 1981 and 1982 are considered a result of the suppressing effect on consumption of higher sugar prices. The assessment of the free market import requirements is one of the criteria for renegotiation of sugar quotas under the last two years of the 1977 Sugar Agreement, which ends in 1982.

A CONCRETE SUGGESTION:

CARPET THE CONCRETE

... WITH OZITE TURF

Ozite offers "Go Anywhere" decorator carpets for indoors or out. Solids, tweeds, stripes at prices you can afford. Makes decorating a delight. Adds life to concrete or other drab outdoor areas.

Use Ozite Turf Center products:
• Children's Rooms
• Play Rooms
• Patios
• Rec Rooms & Dens
• Porches
• Kitchens
• Boats
• Poolside

From **\$3.99**
Ozite
Your Turf Center

GAMBLES

110 N. Main St., Chelsea
Ph. 475-7472

Lawn Care Program

SUPER SPRING SAVINGS SALE

ORTHO WEED & FEED

NOW \$8.58 10,000 sq. ft. bag
\$16.58 5,000 SQ. FT. COVERAGE

- Does two lawn jobs at once.
- Kills lawn weeds - dandelions, plantain, etc.
- Builds thick, green grass.

ORTHO CRAB GRASS
Control Plus Lawn Food
18-3-6
NOW \$16.58

- Use on established lawns
- Does two jobs - feeds lawn, prevents crab grass

ORTHO LAWN FOOD
NOW \$6.88 5,000 sq. ft. bag

- Formula used by turf experts.
- Builds green, healthy turf

NEW FROM ORTHO All About LAWNS \$3.49

The complete regionalized guide to seeding, sodding, fertilizing, watering, newest information on grass varieties, special charts on control of insects, diseases, weeds

ORTHO Broadcast Spreader \$29.98

- Lightweight, durable
- Will not rust
- 4-year guarantee

ORTHO Drop Spreader \$27.98

- Lightweight, durable
- Will not rust
- 4-year guarantee

Come in and stock up.

CHELSEA HARDWARE
110 S. MAIN ST. PH. 475-1121

KITCHEN CABINET SALE
30-50% OFF
(Sale Ends May 10, 1980)
FEATURING CABINETS BY

- ★ DUTCH MILLS - From the heart of the Amish country.
- ★ FIELDSTONE - Cabinets of distinction from Iowa.
- ★ CONTINENTAL - Quality cabinets, reasonably priced.

SELECTION

- ★ 50 Door Styles
- ★ 30 Stain Choices
- ★ 50 Hardware Options
- ★ WOODS - Oak, Ash, Maple, Cherry, Beech, Alder

INSTALLATION

- ★ DO-IT-YOURSELF or Complete Installation By Our Qualified Installers

RANGEMASTER HOODS Reg. \$50 NOW \$39.00	JENN-AIR BUILT-IN RANGE Reg. \$650.00 Rebate 30.00 YOUR COST \$620.00	STAINLESS STEEL 2-BOWL SINKS Reg. \$50 NOW \$35.00
---	--	--

ACCESSORIES

- ★ Faucets by Delta
- ★ Fixtures by Kohler
- ★ Marble Vanity Tops
- ★ Rangemaster Hoods
- ★ Jenn-Air Appliances
- ★ Thermador Appliances
- ★ No-Seam Countertops
- ★ Elkay Sinks
- ★ Grohe Faucets

DUTCH COUNTRY KITCHENS
146 E. MAIN ST., MANCHESTER
PH. 428-7292

VISA master charge

McLEAR'S Evergreen Nursery OPEN HOUSE

Fri., Sat., Sun., May 2-3-4

9 a.m. to 8 p.m.

See our low prices on flowering shrubs, evergreens and shade trees!

REFRESHMENTS - DOOR PRIZE

1-94 to Grass Lake exit, 5 miles north on Mt. Hope Rd. to Trist Rd.
11362 TRIST RD. (517) 522-5177

You Read It First in The Standard!

Tonight and Every Thursday

THE CAPTAINS TABLE ROAST BEEF BUFFET



NOW
SERVING
COCKTAILS
IN OUR
NEW BAR

"Carved Before Your Eyes"

Serving from 4:30-9:30 p.m.

The Captains Table - 8093 Main St., Dexter

Thursday, Friday, Saturday open till 7

Smorgasbord SUNDAY, MAY 4

12 to 2:30 p.m.

Wylie Middle School

DONATIONS:

Adults \$4.50
Children 5-12 \$2.25
Children under 5 Free

Sponsored by the Dexter Masons & Stars

School Board Briefs

At the April 23 regular meeting of the Chelsea Board of Education, present were Stirling, Feeney, Schafer, Heller, Schumann, Snyder, Dils, Superintendent Van Meer, Assistant Superintendent Mills, Principals Williams, Conklin, Benedict, Wojcicki, Assistant Principal Vogel, Community Education Director Rogers and guests.

Meeting was called to order at 8:30 p.m. by President James W. Stirling.
Board accepted the minutes of the April 14 meeting.

The Board accepted the resignation of Sharon Baylis, High School Media Specialist. Sharon has been on maternity leave during the present school year.

Board approved the recommendation to place the following teachers on second year probation for the 1980-81 school year:

Patrice Henkel, North school art teacher; Kathleen Gilbert, Special Education, EMI, Beach school; Susan Hull, Media Specialist, Beach; Laurie Von Hofe, physical education teacher, Beach; Veronique Wills, Special Education, EI/LD consultant, Beach; Judy Bottum, high school special education teacher; Dawn Speakman, high school English teacher; Ann Crowley, high school Spanish teacher; Dale Richards, high school building trades teacher; and Thomas Fletke, high school social studies teacher.

Board approved the recommendation to grant tenure status to the following teachers:

Bernadine Hynes, North special education teacher; Michele Johnson, speech correctionist; Gena Shoemaker, South school teacher; Susan Harris, developmental reading teacher; Patrice Tchiblakian, special education, Beach; Margaret Luckham, high school art teacher; Wayne Welton, high school physical education teacher; Eugene LaFave, high school counselor; Stephen Lieth, high school chemistry/physics teacher; and Sherrill Pryor, high school media specialist.

Board approved continuing tenure status for teachers at North, South, Beach and the High schools.

Board accepted the resignation of Kelly Thomas, fifth grade

teacher at North school. Kelly will be relocating in the Chicago area.

Board accepted the administrative recommendation for a 7th grade English and World History bloc program at Beach Middle school for the 1980-81 school year. There will be no additional cost to the school district for this program. This arrangement will strengthen the instructional program for reading, literature, grammar, writing, spelling, vocabulary, and will correlate World History with the English program.

Board approved the following teachers to be placed on lay-off status due to declining enrollment:

Sherrill Plank, North school; Susan Harris, South school; and Judy Bottum, high school special education.

Board accepted an offer to purchase the building trades house at 14088 Red Barn Circle. An offer was made by Mr. and Mrs. Thomas W. Huetteman. The offer is for a total price of \$75,000; \$1,500 down, balance due on a land contract in six months, with monthly payments of \$575.

Board approved a change in the June meeting date due to the annual election. The first June meeting will be held on Monday, June 9, at the Beach Middle school.

The Board certified the election results for the increase in operating millage of 3.2 mills: 1,375, yes; 1,165, no; 15, invalid; and 1, spoiled. The Board will reduce debt retirement levy from 4.6 to 4.0, making the net millage increase to taxpayers 2.6 mills.

Superintendent Van Meer presented a comparison of Chelsea with the other county schools in the 1979-80 state assessment test.

Meeting adjourned at 9:20 p.m.

Please Notify Us
In Advance of
Any Change in Address

Canoe Rental Available at Delhi Park

This is a wonderful season in which to enjoy a canoe trip along the Huron River in southeastern Michigan.

One of the most popular routes begins on the Huron River southwest of Pontiac, through Milford, Kent Lake in Kensington Metropark, the Hamburg area, Hudson Mills and Delhi Metroparks near Dexter, southeast to Ann Arbor and on to Belleville and Lake Erie.

There are several Huron-Clinton overnight campsites available by advance permit. Charges are \$1 per canoe up to 5 (\$5 maximum). Permits are available by contacting the park offices at Kensington Metropark (phone: 685-1561), Hudson Mills Metropark (phone: 428-8211) or Lower Huron Metropark (phone: 697-9181).

Canoe rental service is available at Delhi Metropark near Dexter daily in the summer, (with advance reservations advised during busy week-ends and summer months). Two trips are available: Hudson Mills to Delhi Metropark, \$12.00, or Dexter-Huron Metropark to Delhi Metropark, \$7.50, plus deposit charge.

For details contact Skip's Canoe Rental Service, phone 769-8686 or Hudson Mills Metropark, phone 428-8211 (Dexter).

Free copies of the current Huron River Canoe Map (with orange colored cover) are available at Kensington, Hudson Mills or Lower Huron Metroparks. To receive a copy by mail—send your name, address and 20 cents to cover postage to: Canoe Map, in care of Metroparks, 3050 Penobscot Bldg., Detroit 48226.

Witnesses Attend

Bible Seminar

Chelsea's Congregation of Jehovah's Witnesses recently returned from a week-end Bible seminar at their Assembly Hall in Holt.

There were 11 other nearby congregations also present, making a total attendance of 1,600. Another assembly has been planned for December.

ANTIQUÉ SHOW-SALE

WESTWOOD MALL, JACKSON

WED., APRIL 30 thru SUN., MAY 4

WEST MICHIGAN AVENUE, JACKSON

During Mall Hours

Large Display of China, Furniture,
Primitives, Toys and Jewelry.

KULIFAY-SIEGERT - 15766 STAMFORD - LIVONIA

Cut Your Heating Cost By 1/3

Are you now heating with fuel oil when natural gas is available to you?

Call All Season Comfort Co. (ASCCO) 475-7617 for an estimate on replacing that inefficient oil furnace to natural gas.

SEE OUR



Also, inquire about our combination side-arm or space heating wood systems.

ASCCO ALL-SEASON COMFORT CO.

Now Open 8 a.m. to 5 p.m. Mon. thru Sat.
Heating, Air Conditioning & Custom Sheet Metal Work
115 W. MIDDLE ST.
CHELSEA, MICH. 48118 (313) 475-7617



McDonald's helps you make the most of your morning.

Now Open Weekdays, 6:30 a.m.

Ahhh morning. It's special. And at McDonald's, we serve you breakfast fast, so you get a little extra time each morning. The time you usually

waiting for it. You can enjoy a delicious hot meal of fresh Grade A Scrambled Eggs with Pure Pork Sausage and Golden Hashbrowns.

And still have time to do something just for you.



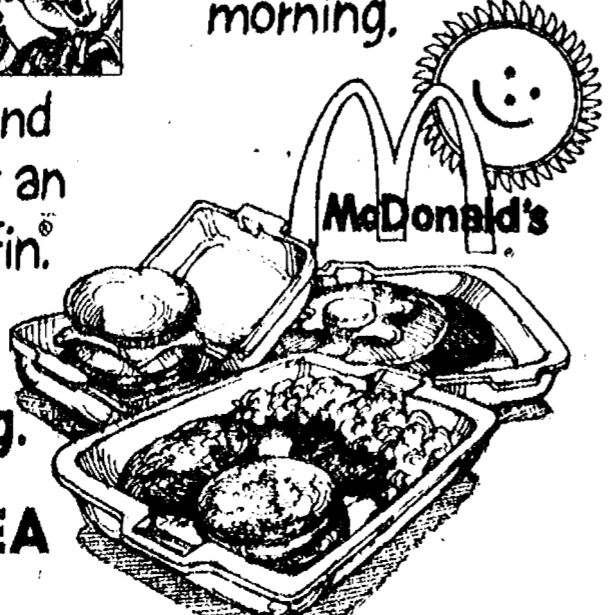
Something that will really make the most of your morning.



spend preparing breakfast. Or



Hotcakes and Sausage. Or an Egg McMuffin.



Make us a part of your morning.
1535 S. MAIN ST., CHELSEA
PHONE 475-9620

Jiffy market

Big Enough To Serve You . . . Small Enough To Know You!

Corner of Sibley and Werkner Rds. - Chelsea, Michigan 48118

PHONE 475-1701

SALE PRICES EFFECTIVE MAY 1 thru MAY 4



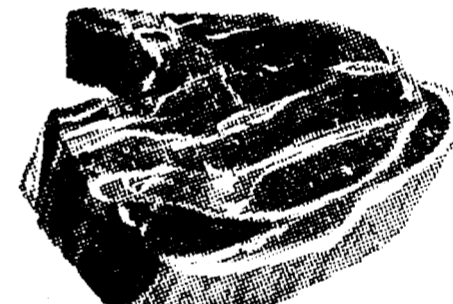
U.S.D.A.
CHOICE

RIB STEAK

\$1.99 lb.

T-Bone Stk. lb. \$3.49 Sirloin Stk. lb. \$2.59

Club Steak lb. \$3.19 P'terh'se Stk. lb. \$3.49



U.S.D.A.
CHOICE
BEEF

FIRST CUT

BLADE CUT lb. \$1.09

CENTER CUT lb. \$1.49

ARM CUT lb. \$1.59

ENGLISH CUT lb. \$1.59

ALL ROASTS LIMITED CUTS TO CUSTOMER

HOLSUM KING SIZE

WHITE BREAD 59¢

24-Oz.
1 1/2-Lb. Loaf

CAIN'S
**POTATO
CHIPS**

Regular or Marcelle

12-Oz. Bag **99¢**

ECKRICH
**REG.
FRANKS**

1-Lb. Pkg. **\$1.49**

U. S. NO. 1
**MICHIGAN
POTATOES**

10-Lb. Bag **89¢**

VELVET
CREAMY
**PEANUT
BUTTER**

2-Lb. Jar **\$1.29**

FARM-MAID HOMOGENIZED

MILK gal. \$1.89

FARM-MAID SPECIALS

**LOW-FAT
MILK**

gal. **\$1.59**

**ORANGE
JUICE**

1/2 gal. **99¢**

**SOUR
CREAM**

1/2 pt. **49¢**

**COTTAGE
CHEESE**

1-Lb. Ctn. **79¢**

12-OZ. CANS

COCA-COLA 6 pac \$1.49

Plus Deposit

FRESH MEATS - GROCERIES - PRODUCE - BEER - WINE - LIQUOR

Open 7 a.m. Morning to 10 p.m. Nights - 7 Days A Week

Tell Them You Read It
In The Standard!

ROUGH/FINISH GRADING
DRIVEWAYS - POST HOLES
FIELD MOWING - ROTOVATING
TRUCKING - TRACTOR LOADER

Free Estimates - 475-9576

J. C. WOLF
LANDSCAPE CONSTRUCTION

NOW ON TUESDAY NIGHTS
CHICKEN BUFFET
Thursday, Friday, Saturday open till 7



NOW SERVING
COCKTAILS
IN
OUR NEW BAR

our Famous Deep-Fried Chicken
and SPECIAL BARBECUED CHICKEN

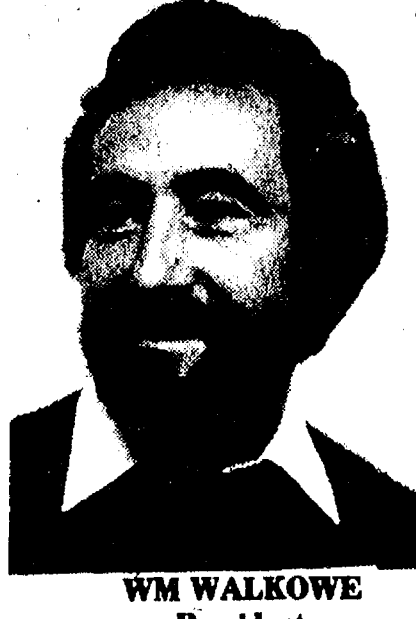
also mashed potatoes and gravy, dressing, and salad bar.
Serving from 4:30-9:30

at the **CAPTAINS TABLE**
8093 MAIN ST., DEXTER PH. 426-3811

ROOFING - SIDING
SEAMLESS GUTTER

Experienced Crews
Free Estimates

**WALKOWE HOME
IMPROVEMENT CO.**
Phone (313) 428-8468



WM WALKOWE
President



REPRESENTING CHELSEA HIGH SCHOOL at the annual sessions of Girls State and Boys State will be, from left, Pat Powers, Bill Freeman, Nancy Heller, Jeff Price and Chris Kvarnberg. Both programs, held at different times and locations, are designed as exer-

cises in self-government for Michigan high school juniors. Participants join mock political parties, nominate candidates at conventions and elect officials to govern mythical counties and cities.

Boys, Girls State Delegates Chosen

Five Chelsea High school students have been selected to attend Girls State and Boys State, both of which afford practical experience in self-government, this summer.

Attending Girls State June 14-22 will be Chris Kvarnberg, sponsored by the Modern Mothers Child Study Club, and Nancy Heller, sponsored by the Chelsea Lions Club.

Jeff Price, Bill Freeman and Pat Powers, sponsored by the Chelsea Kiwanis Club and the Lions Club, will attend Boys State from June 11-18.

Jeff Dils was originally chosen to attend Boys State, but withdrew because of a scheduling conflict.

Boys State and Girls State, sponsored by the American Legion and American Legion Auxiliary, respectively, provide high school juniors with a deeper understanding of governmental processes by allowing them to participate in a mock government through elections, campaigning and serving in public office.

Students attending the programs this year were nominated by Chelsea High school faculty

members and then chosen by a committee.

Girls State will be held this year at Central Michigan University in Mt. Pleasant. Upon arrival at Girls State, each of 504 participants from around the state is assigned to a mythical political party and to a county and city. The citizens nominate and elect various officials, are instructed in the duties of public offices and learn the functioning of the various branches of government, including the State Supreme Court, the Legislature and the executive branch.

Activities at Boys State, held at

Michigan State University in East Lansing, are similar. Boys may run for office in any of the three branches of government

and will use the convention system to nominate candidates for city, county and state offices. Enrollment at Boys State is limited to 1,150.

There will also be a band, glee club and newspaper in each program. Two participants from Girls State will be chosen for Girls Nation, and likewise, two boys will be chosen for Boys Nation, both programs to be held

later this summer in Washington, D.C.

14th District Court Proceedings

Week of April 21-15
Judge Kenneth Bronson
Presiding

Bryan B. Reynard was sentenced for possessing an altered operator's license to 10 days in the Washtenaw County Jail. No fines or costs.

Rickey D. Rickett was sentenced for impaired driving to attend Alcohol Education Program and pay \$250 fines and costs or serve five days in the Washtenaw County Jail.

Vernon J. Mata was sentenced for impaired driving to attend Alcohol Education Program and Human Behavior Classes. Fines and costs, \$200.

Catherine A. Mikesa was found guilty of dog at large. Sentenced to pay \$5 State Judgment Fee.

Robert Stockard pled guilty to not paying fines and costs on a charge of impaired driving. Sentenced to pay balance of \$150 and \$25 warrant fee or serve 10 days in the Washtenaw County Jail.

James Lyos admitted responsibility to speeding. Fines and costs, \$15.

Leo Jerome Allen pled guilty to impaired driving. Fines and costs, \$200.

Charles A. Mull pled guilty to open intoxicants. Sentenced to one day on probationary work program. Fines and costs, \$75.

Jimmie C. Smith pled guilty to open intoxicants. Sentenced to one day on probationary work program. Fines and costs, \$25.

Varsity Softball

April 22—Lincoln (A) ... 4 p.m.
April 25—Dexter (H) ... 4:30 p.m.
April 26—Pinckney (DH-H) 11 a.m.
April 29—Milan (A) ... 4:30 p.m.
April 30—G Richard (H) 4:30 p.m.
May 2—Saline (H) ... 4:30 p.m.
May 3—Brighton (DH-H) 11 a.m.
May 6—JC West (H) ... 4:30 p.m.
May 9—Lincoln (H) ... 4:30 p.m.
May 10—Royal Oak (A) ... 9 a.m.
May 11—Dondero (A) ... 9 a.m.
May 13—Dexter (A) ... 4:30 p.m.
May 15—C. Central (A) ... 4 p.m.
May 16—Milan (H) ... 4:30 p.m.
May 17—Pioneer (DH-A) 11 a.m.
May 20—Saline (A) ... 4 p.m.
May 22—Western (A) ... 4 p.m.
May 23—Pre District
May 27—Huron (DH-A) 3:30 p.m.
May 30—District
Coach: Bill Wescott

County Board of Commissioners Commends Band

The Washtenaw County Board of Commissioners, in a resolution passed last week, has offered congratulations and best wishes to the Chelsea High school band on the occasion of its trip to the Mexican Band Festival this week.

Text of the resolution reads as follows:

"Because of its excellence and outstanding ability, the Pride of Chelsea High School Band has been chosen to compete as the State of Michigan representative at the International Band Festival in Mexico City, Mexico in May.

"The Board of Commissioners acknowledges the talent and exceptional effort involved in achieving this recognition and wishes to congratulate the band members and send its best wishes to the band, which is not only "the Pride of Chelsea," but also the pride of Washtenaw County."

Comm. George Merkel of Chelsea is serving as vice-chairman of the board this year.

BOY SCOUT TROOP 425
GARAGE SALE
SATURDAY, MAY 10
9 a.m. to 4 p.m.
at **LONGWORTH PLATING**
(across from Heydlouff's)
Donations Welcome.
Call 475-7418 or 475-7443 for pick-up.

FOR PROFIT
FEED
See us for feed needs!
Feed Formulas Tested, Proved To Get Results
Extra proteins, vitamins and minerals in proper balance, scientifically blended, make our feeds real profit producers for you.
Farmers' Supply Co.
Phone 475-5511

The last undervalued "collectible."

Merrill Lynch invites you to a free Seminar.

In a period where people are frantically looking for "collectibles" in the hope of appreciation, you may be surprised to learn that there is one that has been sadly neglected.

While prices of the "collectibles"—antiques, stamps, art, etc.—have already experienced dramatic advances, this neglected "collectible" is still selling at 1960 prices. What is it?

The answer: Common Stocks.

At Merrill Lynch, we watch thousands of common stocks every day and we see many indications that convince us that common stocks are the prime investment for the 1980's.

We see interest rates at levels that cannot be sustained indefinitely. We see high corporate profits and dividends, and stock prices that have not yet begun to reflect them. And inflation is steadily pushing the value of corporate assets upwards.

In fact, many stock prices have already begun to outpace other forms of investment. And we think this is only the beginning of a long-term trend.

May we tell you more?

Merrill Lynch is holding a free Seminar, and there are several good reasons to come. We'll discuss all the factors which we think make common stocks such a good investment now. We'll give you three lists with names of 30 stocks we consider to be especially outstanding now—for a variety of investment objectives, such as: speculative appreciation, high current yield and long-term capital growth. We'll give you up-to-the-minute facts on the stocks most asked about. And we'll send you the latest data on any three commonly traded stocks of your choice.

All of it free and without any obligation.

Date: Tuesday, May 6th Time: 7:00 to 9:00 p.m.

Place: Mantels in the Briarwood Hilton

State Street at I-94, Ann Arbor

For free reservation, mail the coupon or call (313) 769-4305.

Mail to:
Merrill Lynch
332 E. Liberty
Ann Arbor, MI 48104

Name _____
Address _____
City _____ State _____ Zip _____
Business Phone _____ Home Phone _____
Merrill Lynch customers, please give name and office address of
Account Executive: _____

Please reserve seat(s) for me at your free Seminar on common stocks. Also send me research reports on these 3 commonly traded stocks:

I cannot attend. Please send me your free information kit on common stocks, plus research reports on the 3 stocks I've listed above.

Merrill Lynch
Merrill Lynch Pierce Fenner & Smith Inc.
A breed apart.

BUSHELS AHEAD
BLANEY
ROUTE
Hi-Potential Single Cross B 606
YIELD CHALLENGER
B 606 is a mid-season challenger with eye appeal, and more. This hybrid produces a big girthy ear that fills the wagon or bin in a hurry. Excellent standability and clean easy harvesting. Surprising yields. A must for your best acres.
Also Available: 3-WAY CROSS and all varieties of Waxy Corn.
CHAS. W. TRINKLE & SONS
Ph. (313) 475-7798
9631 Trinkle Rd.
Dexter, Mich. 48130

HASTINGS TREE FARM
9500 North Territorial Rd., Dexter
(Associated with Dexter Animal Clinic)
These locally-grown trees, 2 to 5 ft. tall, are now available for landscaping.
★ **AUSTRIAN PINE**
★ **SCOTCH PINE**
★ **RED (Norway) PINE**
★ **WHITE PINE**
★ **WHITE SPRUCE**
Planting Season - Mid-April to Mid-May
Priced \$5 to \$18 with quantity discount available.
All stock state inspected and guaranteed.
Phone (313) 426-3985

Rug Hooking Show Slated at Manchester Gallery

If you've never hooked a rug, you may not understand—but if you have you know and acknowledge the fascination of this old handicraft. But whether you have or not, you may be interested in the history and background of the designs and techniques of these heirlooms which are so treasured today.

In May the Manchester Art Guild will be privileged to present the "Early American Authentic Rug Hooking Show." This exhibition will have many traditional and contemporary samples of hooked rugs shared with the public by two rug hooking groups, the Southeastern Michigan Rug Crafters, and the Ann Arbor Chapter of Rug Crafters.

The exhibition will open Sunday, May 4 from 1 to 4 p.m. with lectures and fascinating demonstrations of this highly creative craft.

Rug hookers carefully dye their own wool strips to achieve the proper shading in each piece they do and on Saturday, May 10 and Saturday, May 24 there will be free demonstrations on their dyeing techniques. One will be on the making and use of natural dyes and the other will demonstrate the use of synthetic dyes on natural wool. The natural dyeing demonstration will start at 10 a.m. on Saturday, May 10 and continue throughout the day until 3 p.m. You can learn about synthetic dyes on Saturday, May 24 at 10 a.m. Both demonstrations will be in the Gallery.

During the show, which will run from May 4 through 25, one lucky person will be able to win a beautiful hand-hooked footstool with a solid oak base. Tickets will be on sale in the Gallery and the award date will be May 24.

The Manchester Art Gallery is located at 138 E. Main St. and the Gallery hours for this show will be Thursdays, 7:30 to 9 p.m. Friday and Saturday 9 a.m. to 1 p.m. and 7:30 to 9 p.m., and Sundays 3 to 6 p.m.

Boys Track Team

(Continued from page one)
2nd, 100-yard dash (:10.5); Bob Schleede, 2nd, one mile run (5:00); Duane Robbins, 3rd, 440-yard dash (:56.3); Jeff Bradley, 1st, two-mile run (10:58); Mark Brosnan, 2nd, two-mile run (11:06); and Steve Cattell, 3rd, two-mile run (11:36).
Taking first place in the 880 relay for Chelsea was the team of Toby Boyd, Dave Wojcicki, Dave Nicola and Jon Riemenschneider with a time of 1:38.6. The 440 relay team of Kevin Richardson, Dave Nicola, Dan Kleis and Bill Freeman also took a first with a time of :48.2.

Boys Track

May 2—Mason Relays
May 6—S. Lyon (H) 4 p.m.
May 8—Saline (H) 4:30 p.m.
May 10—Mich. Center Relays
May 13—Western (H) 4 p.m.
May 17—Regionals (State)
May 21—League Meet 2 p.m.
Coach: Pat Clarke

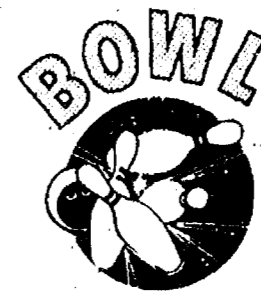
Senior Citizen Nutrition Program MENU and ACTIVITIES

Week of May 2-8
Friday—Tomato stuffed with tuna, chilled apricot nectar, pear and cheese salad, bran muffin and margarine, fruit pie, beverage. Recorder, 10 a.m.; Bible as literature, 11:15 a.m.
Monday—Spaghetti with meat sauce, buttered spinach, pear salad, hot garlic bread, brownies, beverage. Arts and crafts, 10:30 a.m.; exercise, 11:15 a.m.
Tuesday—Cheese fondue, french-style green beans, tasty coleslaw, wheat bread and margarine, whipped strawberry gelatin, beverage. Bingo.

Wednesday—Chicken divan with broccoli, orange rice, apricot-plum salad, blueberry muffin with margarine, chilled fruit cup, beverage. Cards.
Thursday—Oven baked fish with tartar sauce, O'Brien potatoes, country-style tomatoes, assorted breads and margarine, seasonal fresh fruit, beverage.

Michigan State University operates the nation's largest single campus residence hall system which houses more than 18,000 single students in 36 residence halls.

FREE BOWLING BALL



Attention, Senior Citizens

Learn-To-Bowl classes will be given at Chelsea Lanes beginning Wednesday, May 7 at 1:30.

For more information, please contact Yicky at

CHELSEA LANES

1180 M-52

Ph. 475-8141

Subscribe to The Chelsea Standard



CAROL BLAINE of the Manchester Art Guild and the Southeastern Michigan Rug Crafters admires two beautiful examples of hooked pieces to be on display in Manchester. The rug was hooked by Mrs. Charles Waterman of Tecumseh. The pictured hand-hooked foot stool will be awarded to someone. Several Chelsea residents are showing their pieces at the gallery.

Baseball Team Hurt By Mistakes

(Continued from page one)
bases on balls. A Chelsea player allowed another Dreadnaught run that inning.

Then in the Dexter half of the second with two out and one man on base, a dropped fly ball and a poor throw on the part of the Bulldogs let in the final Dexter run.

Chelsea collected its only score in the sixth inning, when Jeff Dils got on base on an error. He traveled to third on a ground out and scored on a Lou Jahnke single.

Chuck Moore threw six innings, yielding four hits and striking out seven.

Neither side was overwhelming at the plate. Chelsea managed on-ly three hits and Dexter had four. Other Chelsea hits were collected by Dils and John Dunn.

At the time of the contest, Dexter was undefeated with eight wins.

A scheduled home contest with Milan on Tuesday afternoon was called because of rain, despite attempts to get the game underway. Friday, the Bulldogs should meet with Saline at Saline and Saturday they will play a double header at Pinckney.

Chelsea's varsity is currently 1-5 this season.

Pick-Your-Own Farm Market Guide Offered

The 1980 edition of Michigan Country Carousel, a guide to pick-your-own farms and roadside markets throughout the state, published by the Michigan Department of Agriculture, is available to the public without cost.

According to Dean M. Pridgeon, MDA director, "if you've never experienced the joy of seeing how fruits and vegetables are grown and harvested, this booklet is for you. Even if you've been picking-your-own for years, it's a valuable guide."

Country Carousel lists about 1,000 farms and markets in alphabetical order by county, Pridgeon said. It gives the name, address, directions for driving to the farm and a list of produce available.

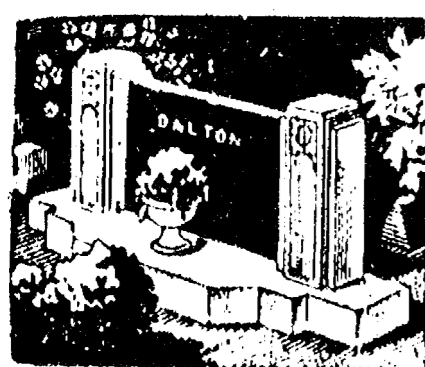
"Phone numbers are also listed, and it's wise to call ahead. Sometimes ripe produce has been harvested and it may be a few days before more of the crop has matured and is ready to pick."

The booklet's four-color cover features many of our state's commercial food crops and carries the department's promotion theme, "Good things growing in Michigan."

The size of Country Carousel makes it ideal for storage in the

Varsity Baseball

May 2—Saline (A) 4 p.m.
May 3—Pinckney (DH-A) 11 a.m.
May 5—Willow R (H) 4:30 p.m.
May 6—JC West (A) 4:30 p.m.
May 9—Lincoln (A) 4 p.m.
May 13—Dexter (H) 4:30 p.m.
May 15—C Central (A) 4:30 p.m.
May 16—Milan (A) 4:30 p.m.
May 17—Novi (DH-H) 11 a.m.
May 20—Saline (H) 4:30 p.m.
May 22—JC West (H) 4:30 p.m.
May 23—Pre District
Coach: Wayne Welton



MAUSOLEUMS ★ MONUMENTS
BRONZE TABLETS ★ MARKERS

BECKER MEMORIALS
6033 Jackson Road
ANN ARBOR, MICHIGAN



SPRING WALLCOVERINGS SALE

SAVE 30%

Make your home come alive with some beautiful new wallcoverings at important savings. Books from Birge and Pania Astor, all marked 30% off. Bring your color samples with you. Sale Books cannot be loaned out of the store. Hurry. Sale-Ends May 31.



HOME FURNISHINGS

Open Mon., Wed. and Fri. Until 9 p.m.
Phone Chelsea 475-8621

Get a check for

\$89.92 each month

with a Money Market Certificate from Ann Arbor Trust (\$10,000 minimum)

You don't have to wait six months to receive your interest from a Money Market Certificate at Ann Arbor Trust. If you take advantage of our Monthly Interest Payment Plan, you'll get the earned interest every 30 days—so you can spend it or reinvest it. Each month we'll pay you the interest with a check, or automatically transfer it to your Ann Arbor Trust Checking Account or to your Savings Account where it will earn 5.25% interest compounded continuously (for an

Effective Annual Yield of 5.467%). At Ann Arbor Trust, we keep your money working for you.

- Federal regulations prohibit compounding of interest on Money Market Certificates and require a substantial penalty for early withdrawal.
- Your savings are insured up to \$100,000 by FDIC.
- The above interest payment is calculated on a 30 day month.



ANN ARBOR TRUST
THE BANK OF TRUST
CHELSEA BANKING OFFICE • 475-9154
1478 Chelsea-Manchester Road • Member FDIC

10.790%

 Interest Rate

Current Rate Effective May 1-7

\$545.49

 Interest Earned in 26 Weeks. On \$10,000

Riders Sought for St. Jude Bike-A-Thon

The Rev. Thode Thodeson, chairman of the St. Jude Children's Research Hospital Wheels for Life Bike-A-Thon, today asks residents of Chelsea to volunteer their time and energy for the May 17 ride.

Volunteers are needed to help conduct the Wheels for Life Bike-A-Thon on May 17 to raise funds to support the world-famous center in the battle against catastrophic childhood diseases.

"We're looking for people who are willing to contribute a little of their time to help us help children live," the Rev. Thodeson said. "Our biggest need is for riders since they are the ones who will make the event a success."

Those who want to ride should pick up their registration forms at Heydlauff's now and start getting sponsors. Everyone who raises \$25 will get a St. Jude Children's Research Hospital T-shirt, and those who raise \$75 or more will get a special biker's back pack. "We are getting special prizes for the top riders," the Rev. Thodeson said.

The Bike-A-Thon is not a race. It is riders riding a certain number of miles as 10, 15, 20, etc. What the rider is able to set for his goal is the object.

At St. Jude doctors and scientists are studying Leukemia, Hodgkin's disease and other forms of childhood cancers as well as other deadly diseases that strike the young. The results of the research conducted there are

freely shared with doctors and scientists all over the world, enabling stricken children to have a better chance to live.

Founded by Danny Thomas, St. Jude is a leader in the battle against these diseases.

Volunteers may contact the Rev. Thodeson at 18800 Grass Lake Rd., Manchester 48158, phone 475-1920. You may call most mornings and some evenings.

Tennis

May 5—Pinckney (A) ... 4 p.m.
 May 6—Stockbridge (H) ... 4 p.m.
 May 9—Huron (A) ... 4 p.m.
 May 12—Northwest (H) ... 4 p.m.
 May 14—Novi (A) ... 4 p.m.
 May 16—Regionals
 Coach: Terry Schreiner

Jr. High Track (Boys and Girls)

May 1—Howell (H) ... 4 p.m.
 May 7—Milan (A) ... 4 p.m.
 May 9—Tecumseh Relays
 May 12—Tecumseh (H) ... 4 p.m.
 May 15—Saline (H) ... 4 p.m.
 May 22—St. Francis (H) ... 4 p.m.
 Coaches: Randy Johnson
 Lori VonHofe

Please Notify Us In Advance of Any Change in Address

JV Softball Team Wins 3, Loses 1

Chelsea's JV softballers posted three more wins last week against just one defeat at the hands of Pinckney in the second game of a twin bill.

The Bulldogs downed Lincoln, 21-1; Dexter, 20-1; and Pinckney, 10-1, before bowing, 20-5, themselves. The JV now posts a 5-1 season record.

Ann Eisele opened the contest with Lincoln on the mound and threw three innings, striking out seven of 10 batters faced and allowing just one infield hit. She picked up her first win of the season on almost perfect control, allowing no walks.

Shelly Weber relieved Eisele in the fourth inning and allowed the Railsplitters just one unearned run, walking one and striking out two while not allowing a hit.

Chelsea showed a well-balanced hitting attack. Of the 16 Bulldogs going to bat, no one had more than one hit. Amy Hume produced the only extra-base hit of the game with a two-run round-tripper in the first inning, contributing to the inning total of 10 runs.

Julie Patrick turned the outstanding defensive play of the day, converting a sharply hit, ankle-high line drive into a double play.

Friday, Amy Unterbrink made her second start of the year and continued to dominate the mound, holding Dexter hitless for three innings and yielding just one unearned run. Unterbrink struck out nine and walked four in pushing her record to 2-0. She also ran a streak of 15 consecutive outs by strikeout.

Donna Popovich relieved Unterbrink in the fourth inning and gave her second outstanding performance in relief. Popovich gave up just one hit to Dexter while striking out two and walking one. She faced only seven batters in her two innings.

Chelsea managed a meager six hits off the two Dexter hurlers, but, said Coach Charles Waller, "it was more a matter of not getting a pitch to hit than weak hitting. Dexter also made some fine defensive plays in the field, cutting down three Chelsea runners on base."

Amy Hume again led the Chelsea hitting attack, collecting two singles.

The JV Bulldogs traveled to Pinckney Saturday for a doubleheader. The JV White Team played first and Amy Unterbrink got her third call of the season. She responded superbly, hurling a no-hitter and extending her streak of no-hit innings to 13.

Unterbrink's performance sparked Chelsea to a 10-1 win over the Pirates. Her control weakened only at one point when she walked one and hit two batters. She recovered in that inning however, by striking out two and watching catcher Shelly Weber cut down a runner at third to end the inning.

Weber has turned in three excellent performances as Unterbrink's catcher, consistently

making outstanding grabs of some of Amy's more errant pitches when runners are on third.

Unterbrink's string of 24 consecutive outs by strikeout was finally broken when a Pirate got her bat on a pitch and grounded out to Amy on the mound.

Chelsea hitters had a fine day at the plate after leaving the bases loaded in the first two innings without a score. The Bulldogs collected a total of 10 hits, breaking loose in the third inning and scoring twice on an Amy Hume double and an Ann Eisele hit.

It was the fourth inning and five solid hits, however, that put the icing on the game for Chelsea. Kim Boyd blasted a tremendous home run to right center field, driving in three runs. It was Boyd's first hit of the day, coming after two of her deep line drives were picked off by Pinckney players.

Laurie Cobb also had a fine day at the plate as Chelsea's designated hitter, walking four times and blasting a line drive single over third base.

In the second contest of the day, Chelsea's Blue Team ran into a buzz saw in the person of a strong Pinckney pitcher, a junior in her first year of play.

Kim Boyd started for Chelsea on the mound and suffered from weak fielding on the part of her teammates, who committed six errors in the first two innings.

The Chelsea crew gave up 10 runs in those first two innings and were unable to recover. Boyd also had some control trouble in the early innings before settling down and retiring Pinckney in order in the third and fourth innings.

She struck out the side in the fourth, but tired in the fifth and the Pirates picked up four hits and six more runs. Donna Popovich relieved Boyd, but the Pinckney team was on a streak and scored four more runs on weak fielding by the Bulldogs.

In spite of facing the first season loss for a JV team, Chelsea didn't give up and scored three runs in the seventh to bring the final score to 20-7. Marty Kovick, Kathy Doll, Kim Boyd and Nancy Hastings all collected solid hits off the strong Pirate pitching.

Lisa Beeman also had a good day in the field, making four put-outs and playing a strong game at second base.

High School Science Teachers In Short Supply

The number of college students preparing to be science teachers has dwindled to all but nothing. The result is a growing shortage of high school science teachers, especially in rural and inner-city schools.

James J. Gallagher, director of Michigan State University's Science and Math Teaching Center, attributes the shortage to several factors, including salaries and publicity about the oversupply of teachers.

"Science teachers may start out at \$10,000 or \$11,000 in many parts of the country, but engineers, computer scientists and many others may have beginning salaries that are at least 50 percent higher, for example, \$15,000 to \$18,000."

Many students express disbelief when told there is a shortage of upper level math and science teachers, because in some areas of teaching, such as elementary education, there is an oversupply, said Gallagher.



PEANUT CHAMPS: Displaying first-place trophies for their finish in the Peanut Bowling League are The Fireballs, from left, Scott Baker, Todd Rowe, Jordan Gray and Jerrod Fletcher. Rowe received a trophy for the highest Peanut game of the year, a 201, and a perfect attendance patch. Baker and Gray also received plaques for a Holiday Doubles tournament win, and Gray has a patch for highest Peanut series of the year. Except for one week, the Fireballs stayed in first place all season. Awards were presented by Chelsea Lane's owner Ed Greenleaf to members of the Peanut, Prep, Junior and Major leagues.

Carl's Cleaning Service
 409 W. Middle St. Chelsea, Mich.
Professional Carpet & Upholstery Cleaning
 BUSINESS - RESIDENTIAL
 FREE ESTIMATES Phone 475-8007

Let Our Advertisers Know You Read Their Standard Adv.

LITTLE ROOSTER RESTAURANT & LOUNGE
Fine Foods
 DINNERS - LUNCHES - COCKTAILS
 Pizzas - Italian Spaghetti
 Carry-Out Fried Chicken

DANCING TO LIVE MUSIC
 Every Friday and Saturday
 FRI., MAY 2 and SAT., MAY 3
 Featuring NORTH COUNTRY

Special Entertainment
THURSDAY, MAY 15
 One Night Only
 2 GREAT SHOWS
 at 10 p.m. and 12 Midnight

The Fabulous
Elvis
 JIM PATRICK, IMPERSONATOR

and
The Easys
 Get your reservation tickets early for this special entertainment — one night only. Only 150 tickets will be sold.
 \$5.00 per person cover charge
 at the
LITTLE ROOSTER
 11485 North Territorial Rd. Ph. 426-8668

HOURS: Tues., Wed., Thurs. ... 4 p.m. to 11:30 p.m.
 Friday ... 4 p.m. to 2 a.m.
 Saturday ... 2 p.m. to 2 a.m.
 Sunday ... 2 p.m. to 10 p.m.
 Monday ... Closed

POWERFUL IN-TRUCK ...
 Machinery for Amazing Results!!!
IN-SHOP ...
 Rug Cleaning, Auto Cleaning,
 Upholstery Cleaning,
 Rug Binding!!!
 WATER DAMAGE SPECIALISTS!!!
BEST WAY
CARPET CLEANING
 Mon.-Fri. 12 noon-4 p.m.
 Sat. 9 a.m.-3 p.m.
 Serving the Dexter-Chelsea area.
 283 E. Huron 463-3733

CHELSEA WOODSHED EATERY

Eye Openers
 Whether you like a big, hearty breakfast or just a "little something" with your coffee, The Chelsea Woodshed has the perfect breakfast to wake up to. Let them fix your favorite breakfast, or treat yourself to steak and eggs, eggs benedict or one of their special omelettes.

Tomorrow, start your day with breakfast at The Chelsea Woodshed. It may just become the best meal of your day.

Breakfast served from 7 a.m. until 11 a.m.
 Monday through Saturday. Closed Sunday.
 113 S. Main Chelsea, Michigan
 Call 475-1922

VISA MasterCard Discover American Express

Beautiful New Frame-ups for Mom . . .

Enhance her collection of baby, graduation, wedding, and other precious pictures with new frames that are decorator inspired and delightful to look at. Sizes in most styles from 4"x5" to 8"x10". \$12.50 to \$20.95.

SHOP MERKEL'S BOUTIQUE FOR A MOTHER'S DAY GIFT THAT'LL NEVER LEAVE HOME!
 From Antiques to Zebras, you're sure to find a present she'll treasure.

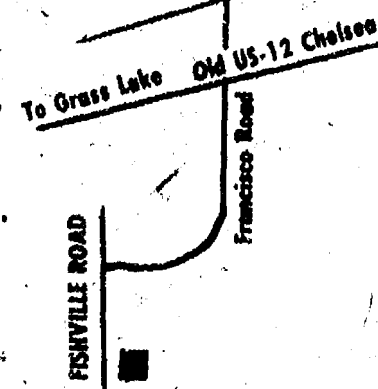
Merkel HOME FURNISHING
 Open Monday, Thursday, Friday Till 9 p.m.
 Use Your VISA, Master Charge or BankAmericard.

MICHIGAN GROWN SPRUCE & PINE NURSERY STOCK

POTTED or
DIG YOUR OWN
\$5.00 - \$20.00



OPEN
WEEK-ENDS
9 a.m.-7 p.m.
Mon., Thurs.
& Fri.
11 a.m.-6 p.m.



PHONE
1-(517) 522-8321
Week-Ends & Evenings

CHRISTMAS TREE LANE

4311 FISHVILLE RD. GRASS LAKE
(Off Francisco Rd.)

Now's the Time to Plant!

Jaycee, Jaycette Awards Presented At Joint Installation

The Pointe East Restaurant in Jackson was the site of this year's Chelsea Jaycee and Auxiliary joint installation banquet. Prior to the dinner, the evening was kicked off with cocktails and appetizers at the home of outgoing Jaycee president and first lady, Bob and Sandy Meyer.

This year's banquet was prepared by Sandy Meyer, Ted and Pam Lewis, Wendell Wagner, Alberta Colby and Charlie Sprawka. Theme for the night was "Make Me Cry," and featured the commercials and titles of some of the popular soap operas.

Following the dinner, Presidents Carol Smith and Bob Meyer gave their farewells to the group then presented awards and special certificates to deserving members of the group.

Auxiliary awards were presented first. Various members received certificates in the areas of Speak Up, 100 percent Participation, Spokette, Sparkette and 90 Day Wonder. Awards were presented for the following projects and service:

Outstanding Project of the Year: Mile of Money for MD; Outstanding Chairman: Denise Martell for Daytime Bingo; Outstanding Spokette (first year member): Chris Wagner; Outstanding Jaycette: Nan Rowe; Flower Power (most supportive Jaycee): Harry Thurkow; Keywoman: Denise Martell; and Mainstay Award (for outstanding service of five or more years): Alberta Colby.

Between awards presentations for the two groups, long-standing member Anne Steinaway presented the Auxiliary with its history, which she has kept and updated.

For the Jaycees, certificates were given to members who participated in the specific areas of Spoke (first year member) and Spark (anyone past first year). Awards were given as follows:

Jaycee Enthusiasm Award (for first year): Bob Aldrich; Project of the Year: Bingo (Charlie Sprawka); Chairman of the Year: Charlie Sprawka (Bingo); Committee of the Year: Horse Show (Dan Bieske); Outstanding Director: Wendell Wagner; Outstanding Vice-President: Harry Thurkow; Outstanding Spoke: Harry Thurkow; Outstanding Sparkplug: Jerry Martell; Outstanding Jaycee: Morgan Rowe; Susie Award (most sup-

portive Jaycette): Denise Martell; Togetherness Award (most service by a couple): Denise and Jerry Martell; and the Presidential Keyman: Charlie Sprawka.

Presidents Smith and Meyer ended their duties by giving and receiving personal gifts to and from their boards and spouses and then went about the task of installing the new officers for the coming year. Harry Thurkow, new Jaycee president, and Denise Martell, new Auxiliary president, each spoke to the group on their plans for the coming year.

Jaycee officers for the coming year are Harry Thurkow, president; Ty Larson, chapter management; Jerry Martell, Ways and Means vice-president; Charlie Sprawka, Individual Development vice-president; Bob Aldrich, Community Action vice-president; Richard Rendell, secretary; Ted Lewis, treasurer; and Mike Hassett and Jim Ross, directors.

Jaycette officers for 1980-81 are Denise Martell, president; Kathy Sprawka, vice-president; Chris Wagner, secretary; and Arlene Samek, treasurer.

Girls Track

April 15—Stockbridge (H) 4 p.m.
April 17—Lincoln (A) 4 p.m.
April 19—Chelsea Relays
April 25—Dexter (H) 4 p.m.
April 29—Milan (H) 4 p.m.
May 2—Mason Relays
May 8—Saline (A) 4 p.m.
May 13—Western (A) 4 p.m.
May 17—Regionals (State)
May 21—League Meet 2 p.m.
Coach: Bill Bairton



AURA INN: This former tavern, dance hall and picnicking park at Pleasant Lake is anxious to meet with all that have come and enjoyed themselves there. Sunday, May 4, the author of "Pleasant Lake House," Patty Paczkowski, will meet with local residents who have memories about the old building to share. Anyone with tales

or photos to share with the author should plan to come out to the lake. The family with the oldest photo of the Pleasant Lake House will be given a free pass for the park. Those with information on the days gone by who cannot attend, should contact the Aura Inn, 428-7993.

Manchester Couple's Son Returns from Duty in Indian Ocean

Navy Aviation Structural Mechanic 3rd Class Bruce A. Watson, son of Mr. and Mrs. Jimmie M. Watson of 12939 Schleners Rd., Manchester, has returned from a deployment in the Indian Ocean.

He is a member of Attack Squadron 56 operating from Yokosuka, Japan. While deployed, his squadron was embarked aboard the aircraft carrier USS Midway.

A graduate of Bentley High school, Livonia, Watson joined the Navy in August 1974.

Advertising revenue pays for costs of producing The Standard. Let the merchant know you appreciate it.

Comm. Fojtik Named to White House Conference

Kathleen M. Fojtik (D-Ann Arbor), Washtenaw County Commissioner, was elected Sunday in Lansing at the Michigan White House Conference on families to represent the second congressional district at the regional White House Conference on Families in Minneapolis, Minn., on June 19-21.

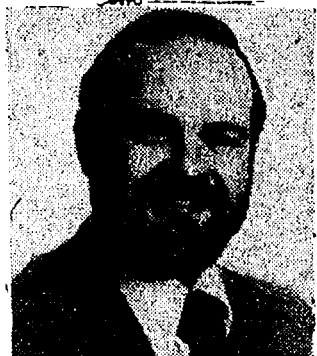
Fojtik is also founder of the Domestic Violence Project, Inc., and executive director of the National Technical Assistance Center on Domestic Violence in Ann Arbor. She sits on the Michigan Crime Victim Compensation Board and co-chairs the national Violence Against

Women Committee of the National Organization of Women.

President Jimmy Carter proposed the White House Conference on Families during his 1976 campaign, "to see what we can do, not simply as a government, but as a nation, to strengthen American families."

Saturday, 32 delegates were elected to the regional conference, one from each of Michigan's 19 congressional districts and 13 delegates-at-large. Another 31 delegates will be appointed by Governor William Milliken to complete Michigan's 63 member delegation to the Minneapolis conference.

Joint Life DECREASING TERM INSURANCE



DAVE ROWE
107 1/2 S. Main, Chelsea, Mich. 48118
(313) 475-9184

A PLAN TO PROVIDE DOLLARS FOR YOUR HOME MORTGAGE. GUARDING YOUR HOME WITH EQUAL COVERAGE FOR AN EQUAL PARTNERSHIP—FROM FARM BUREAU LIFE.

Features benefits for you like: equal coverage for both spouses, flexibility, special conversion privileges, family security, dependable and knowledgeable insurance counsel. Call today for the full details.

FARM BUREAU
INSURANCE
GROUP

Sweet as the Thought... Flowers FOR MOTHER'S DAY



CHELSEA KIWANIS CLUB FLOWER SALE

All profits go
for community
service projects.

FRIDAY and SATURDAY

MAY 9 - 10

Friday, 8 a.m. to 8 p.m. - Saturday, 8 a.m. to 5 p.m.

- at -

HEYDLAUFF'S, 113 N. Main St.

'Remember Her With Flowers'

PROMART
HOME CENTER

HARDWARE STORES

SUPER SAVINGS

SPRING SALE

Bud Wilkinson
for PRO

"Where you get PRO advice plus a real good price."

NELSON
SPRINKLERS
NOW ON
SALE

ADJUSTABLE IMPACT SPRINKLER
7.99

Will sprinkle all or any part of an 86 ft. circle. Diffuser pin breaks stream and has instant connect hose coupling. (91)

SQUARE PATTERN POPPY
6.99

Sprinkles a square from 5 to 45 ft. Saves water along roads and sidewalks. Easy to move metal wheel base. (90)

TOOL CHOICE 5.99
FROM A LEADER
"You'll be glad you bought the best!"
TRUE TEMPER.

DUAL ACTION SCUFFLER HOE

Cuts both ways when used in back and forth action. For weeding and cultivating. (64)

14 TOOTH BOW RAKE

For garden raking and for smoothing freshly dug gardens. (65)

FULL SIZE DIRT SHOVEL

Round point with rolled shoulders. For many gardening jobs. (61)

SWAN
LAWN & GARDEN HOSES

REINFORCED NYLON HOSE
7.99

50 foot lengths 1/2" hose with brass couplings. Hose remains flexible in cold weather and retains its strength in hot sun. (85)

HERITAGE EXTRA FLEXIBLE HOSE
9.99

1/2" 50 ft., reinforced vinyl hose. Belled bias radial construction gives extra strength. Resists abrasion, and weather. Has all-weather flexibility. (86)

SHOP PRO FOR A REAL GOOD PRICE
Bud Wilkinson for PRO

STORM DOOR HARDWARE
IDEAL SECURITY

3.99 ea.

STORM DOOR LATCH

Includes replacement adapter plates to fit over existing holes in door. In black or aluminum finish. (39-40)

IDEAL ADJUSTABLE DOOR CLOSER

For doors up to 1 1/4" thick. Retards the force of the wind so that door can close without damage. Available in black or aluminum finish. (37-38)

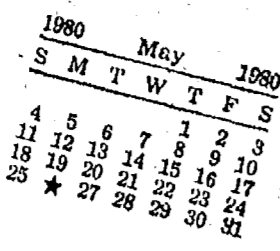
AT THESE PARTICIPATING PRO HARDWARE STORES AND PROMART HOME CENTERS

SALE ENDS SATURDAY, MAY 3, 1980

CHELSEA HARDWARE

110 S. MAIN ST. Chelsea's Friendly Dept. Store PH. 475-1121

Community Calendar



Vermont Cemetery annual meeting, Saturday, May 3, 2 p.m. at cemetery. In case of rain or bad weather, meeting will be held at the home of Vernon Satterthwaite, 1475 Jerusalem Rd.

Rogers Corners Farm Bureau, Friday, May 2, 8:30 p.m. at home of Ernest Schiller, 2820 S. Fletcher Rd.

Stockbridge American Legion Dance, Saturday, May 3, 8 p.m. to 1. Music by The Grand River Boys.

Grandparents Day at South school, Friday, May 2, 1 p.m. program; 2 p.m. open house with refreshments.

Olive Chapter No. 140, RAM, regular convocation and annual meeting Thursday, May 1, 7:30 p.m.

Congressman Carl Pursell will speak on school programs for gifted and talented children, Friday, May 2, 7:30 p.m. at Washtenaw Intermediate School District on Wagner Rd.

Smorgasbord, Sunday, May 4, 12-12:30 p.m., Wylie. Donations: \$4.50 for adults; \$2.25 for children 5-12; under 5, free. Sponsored by Dexter Masons and Stars.

Senior Citizens meet third Friday of every month, pot-luck dinner, games and cards. 6 p.m. at Senior Citizen Activities Center on W. Middle St.

Living with Cancer group, second Wednesday of each month at First Congregational church, 608 E. William, Ann Arbor, 7:30-9 p.m. Contact American Cancer Society, 668-8857, for more information.

Home Meals Service, Chelsea. Meals served daily to elderly or disabled. Cost per meal, \$1.50 for those able to pay. Interested parties, call Barbara Branch, 475-7644 or Ann Feeny, 475-1493.

Recreation Council meets first Wednesday of each month at 7:30 p.m. in the village council room above the police offices. Open to the public.

Knights of Columbus Women's Auxiliary, second Thursday of each month, 8 p.m. at K. of C. Hall, 20750 Old US-12.

Lima Township Planning Commission, first Tuesday of each month, 8 p.m., Lima Township Hall.

American Legion hospital equipment is available by contacting Larry Gaken at 475-7891.

Sharon Township Board regular meeting, first Thursday of each month, 8:30 p.m. adv42tf

OES Spring Salad Luncheon, Thursday, May 14, Masonic Temple, 12:30 p.m. Public invited. adv48-2

Chelsea Lioness Club Rummage and Bake Sale at Longworth Plating, Friday, May 2, 10 to 4; Saturday, May 3, 9 to 1. Proceeds to Special Olympics Track Meet. xadv47

Waterloo Village United Methodist Church Mother and Daughter Banquet, Friday, May 9, Waterloo Township Hall. 6:30 p.m. supper. All invited. adv48-2

Rebekah Rummage Sale, Friday, May 9 and Saturday, May 10, 9 to 5. Sylvan Town Hall. All clean, usable items accepted. For pick-up, phone 475-2705. adv-x48-2

Olive Lodge No. 156, F&AM, regular communications, Tuesday, May 6, 7:30 p.m.

St. Mary's Parish Mother and Daughter Pot-luck supper, Monday, May 12, 6:30 p.m. in the school gym. Because of the supper there will be no regular meeting of the Altar Society in May.

Regular meeting of Herbert J. McKune Unit No. 31, American Legion, Tuesday, May 6 at Chelsea Senior Citizens Center. 6:30 p.m. pot-luck.

Chelsea Community Farm Bureau, Thursday, May 8, 8 p.m. at the home of Calvin and Lois Clark, 944 Ridge Rd., Cavanaugh Lake.

Lima Center Extension Club, Wednesday, May 14, 10:30 a.m. at the home of Mrs. Olive Wiseman, 1250 Guenther Rd., Chelsea. Mrs. Charlotte Inglis will be co-hostess. Lesson, presented by Katherine Redman and Jane Schirer, will cover arthritis.

Women's Waterloo Golf League. Mini-league starts May 6 at 9 a.m. Regular league starts June 3, 8:30 a.m. New members welcome. Call Nancy Hill, 313-475-5556. xadv48-2

Chelsea High school Class of 1975, Thursday, May 1, 7 p.m. at Wolverine Bar.

Chelsea Kiwanis Club meets every Monday, 6:30 p.m. at Chelsea Community Hospital.

North school Parent Group, first Thursday of each month, 8 to 9:30 p.m., North school Media Center.

Chelsea Village Council meets the first and third Tuesdays of each month. advtf

Meetings of the Lyndon Township Planning Commission are held at 8 p.m. the second Thursday of every month at Lyndon Town Hall. advtf

DEATHS

Hector Devulder Mrs. O. Armstrong

Manchester Area Produce Farmer Dies Suddenly Sunday
Hector M. Devulder, 6493 Manchester-Chelsea Rd., died suddenly Sunday, April 27. He was 69.

Born March 22, 1911 in Cortenmark, Belgium, he was the son of Constant and Maria (Vermeersch) Devulder. He was married to Florence Rose, who preceded him in death in 1958. He married Lillis Engler on Feb. 10, 1960. She survives.

Mr. Devulder had been a produce truck farmer since 1938, moving to Manchester from Utica in 1969. He was a member of St. Mary's Catholic church and the Knights of Columbus.

Together with his widow, he is survived by four sons, Ralph Devulder of Manchester, Ralph Engler of Utica, Lawrence Engler of Holly and Richard Engler of Rochester; two daughters, Mrs. Robert (Lillis) Nightengale of Utica and Mrs. Sidney (Janet) Delagrange of Toledo; 13 grandchildren; one sister, Mrs. Eleanor DeHondt of Romeo.

Funeral services were held Wednesday, April 30, at St. Mary's church with the Rev. Fr. R. R. Schlinkert officiating. Burial followed in St. Mary's cemetery, Manchester.

The rosary was recited Tuesday at 8 p.m. at the Jenter Funeral Home, Manchester.

Former Chelsea Resident Dies at Adrian Hospital

Thelma Armstrong, 169 Bailey Dr., Adrian, formerly of Chelsea, died Friday, April 25, at Bixby Hospital, Adrian. She was 52.

Born Aug. 6, 1927 at Petersburg, England, to Albert and Henry (Thomas) Bryan, she married Osbie Armstrong on Feb. 2, 1958. He survives.

The Armstrongs had been Chelsea-area residents until 1975, when they moved to Adrian.

Surviving with her husband are four sons, Joe Cubberly of Tecumseh, Ron Cubberly of Ypsilanti, Don Cubberly of South Lyon, Mike Cubberly of Chelsea; four daughters, Mrs. Phil (Valerie) Davis of Brooklyn, Mrs. Douglas (Glenis) Sneed of Tipton, Mrs. Paul (Joyce) Bryant of Adrian, and Betty Armstrong at home; 22 grandchildren; two brothers, Norman Bryan of Australia, Lawrence Bryan of England; one sister, Dora Smith, of England.

A son, Gerald, preceded her in death July 27, 1975.

Funeral services were held Monday, April 28, 2 p.m. at the Staffan Funeral Home with the Rev. Duane T. Rutherford officiating. Burial followed in Vermont Cemetery, Chelsea.

Births

A son, Nathan Thomas, Tuesday, April 15 to Thomas and Angela Smith, 17201 Fahrner Rd., Chelsea. Maternal grandparents are Mr. and Mrs. George Prappas, 128 Lincoln. Mr. and Mrs. Charles Smith, 6693 Lingene Rd., are paternal grandparents. Great-grandparents are Mr. and Mrs. Robert Hochrein of Chelsea.

A daughter, Candice Hope, Friday, April 11, to Ronald and Debbie Schuyler, 158 Park St. Paternal grandparents are Edward and Edna Schuyler, 8309 North Territorial, Dexter. Maternal grandparents are Justin and Diana Quinn of South Carolina, formerly of Hamburg.

SCHOOL LUNCH MENU

Week of May 5-9
Monday—Hot dogs on buns with trimmings, baked beans, potato sticks, dessert, milk.
Tuesday—Pizza slice, buttered corn, juice, peanut butter sandwich, Jell-O with fruit, milk.
Wednesday—Savory beef over mashed potatoes, buttered carrots, bread and butter, ice cream and cookie, milk.
Thursday—Tacos, soup of the day and crackers, apple dessert, milk.
Friday—Hamburgers on buns with trimmings, mixed vegetables, tater tots, dessert, milk.

Chelsea Co-op Nursery is now accepting applications for fall 1980. Please call Carol Trinkle, 475-8970, or Marcia Hansen, 475-9718. adv38tf

Chelsea Lioness Club, second Monday of each month, 7:30 p.m., Chelsea Community Hospital Conference Room.

Chelsea Communications Club meets fourth Wednesday of each month, 8 p.m., Chelsea Lions basement meeting room.

Culligan filtered conditioned SOFT WATER

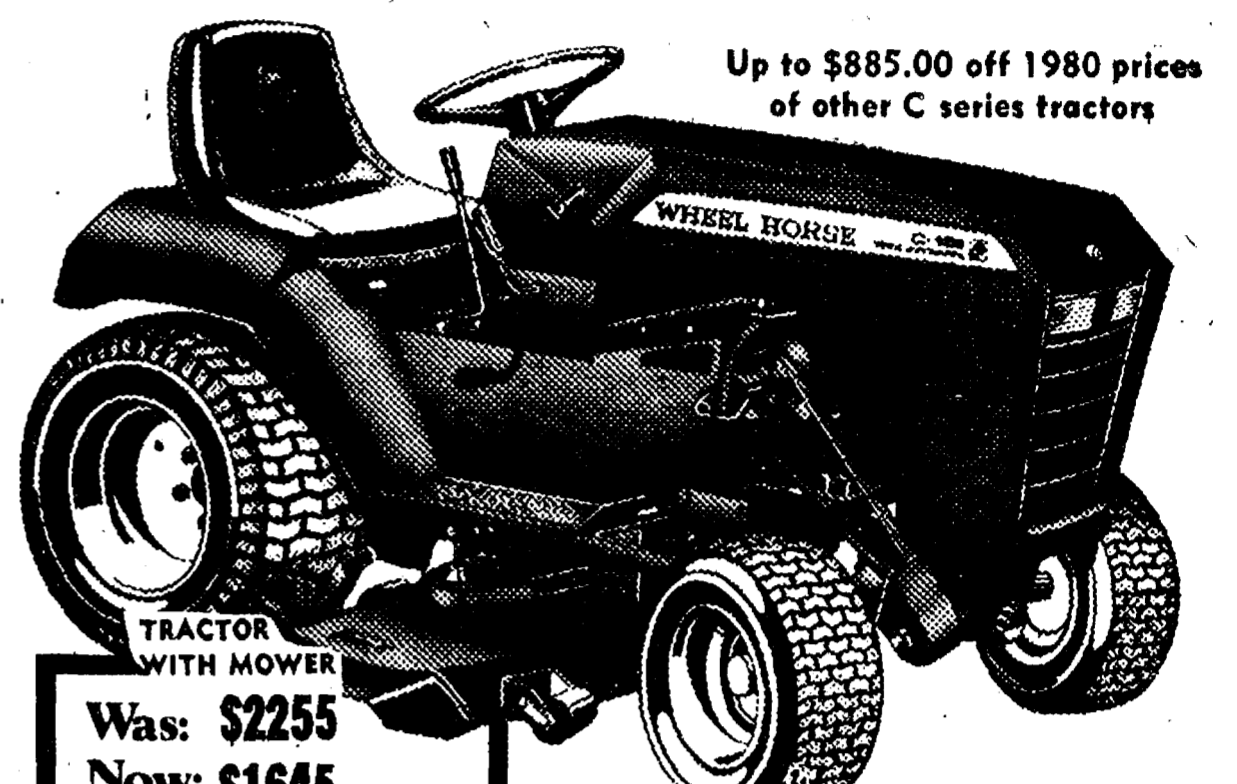
LIKE HAVING A FAMILY SERVANT!

You'll find that you can clean kitchens and baths in a fraction of the time. Eliminates dulling hard water film... helps keep everything cleaner longer. Saves on soaps and cleaners.

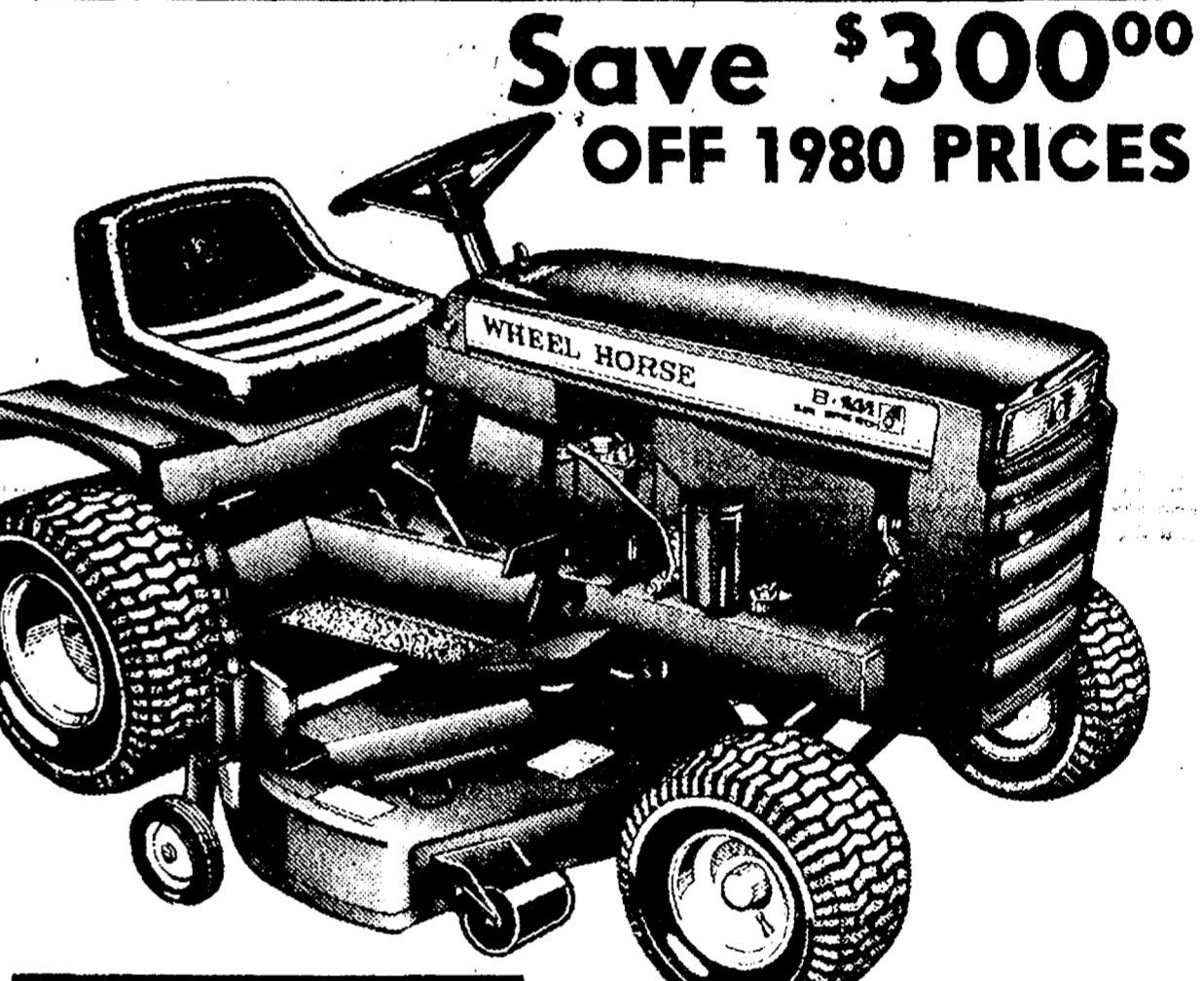
ASK THE MAN WHO CARES! SAY... **KEY CULLIGAN MAN!**
2321 JACKSON AVE. ANN ARBOR 662-5665

Wheel Horse Spring Value Days

SAVE \$610 WHEN YOU BUY A NEW WHEEL HORSE. 1980 MODEL WHEEL HORSE TRACTORS AT 1979 PRICES AND BELOW!



Up to \$885.00 off 1980 prices of other C series tractors
TRACTOR WITH MOWER
Was: \$2255
Now: \$1645
save \$610
8 h.p. 8-Speed Heavy Duty Garden Tractor TRACTOR & MOWER \$1645.00



Save \$300 OFF 1980 PRICES
TRACTOR WITH MOWER
Was \$1250.00
Now \$ 949.95
SAVE \$300
8 h.p. 3-Speed Lawn Tractor B-82 with 36" Mower
NOW ONLY \$949.95
Up to \$500.00 off 1980 prices of other B series tractor



Save \$180 OFF 1980 PRICES
Was \$775.00
Now \$595.00
SAVE \$180
5 h.p. 5-Speed Riding Mower A 51 with 32" Mower

WHEEL HORSE lawn & garden tractors
GAMBLES
110 N. Main, Chelsea 475-7472
Offer good only at participating dealers.

We Need Your Blood!
CHELSEA COMMUNITY BLOOD DRIVE
RED CROSS
SPONSORED BY VFW POST 4076
at 105 N. MAIN ST.
SATURDAY, MAY 10 - 9 to 3

... the world on a silver platter!
Coming May 8th
HEYDLAUFF'S
113 N. Main St., Chelsea Phone 475-1221



CASH REBATES

April 1 thru May 31, 1980

MICROWAVE OVEN
JHP97G

\$100 Rebate

Cleans Itself ELECTRICALLY

CLEANS ITSELF ELECTRICALLY
JB600G

\$50 Rebate

SPACEMAKER™ MICROWAVE OVEN
JVM65

\$30 Rebate

The GE Spacemaker™ microwave oven installs above your range, not on your counter.

GE Automatic Washer
Up to **\$40 Rebate**
WWA 8450

GE DRYER
\$20 Rebate
DDE 8200

GE Dishwasher
Up to **\$40 Rebate**
(3 models with rebates)
GSD 1200

GE REFRIGERATOR
\$50 Rebate
1FF 22/24 RA

These Cash Rebates are direct from GE to you on purchase of these Models at retail 'til May 31, 1980.

BUY NOW! SAVE!
HEYDLAUFF'S
113 N. Main St., Chelsea Ph. 475-1221

Gas Pumps Conversion Is Required

Effective June 20, gasoline pumps in Michigan will be required to register total cost of any purchase, according to Dean M. Pridgeon, director of the Michigan Department of Agriculture.

Pridgeon said station operators have a choice of modifying their current pumps to register \$1 or more per gallon, or converting to the metric "liter" system.

A 180-day emergency regulation allowing sale of gasoline by the half-gallon price was initiated in June 1979, then extended in December for an additional 180 days to allow additional time for stations to convert to one of the new systems.

"Contrary to rumors circulating throughout the petroleum industry, there can be no additional extension. By law, an emergency regulation can be extended only once," Pridgeon said.

Customers purchasing gasoline from pumps that have been converted to liters can compare prices by multiplying the liter price by 3.785 to determine cost per gallon.

A table showing conversion of liters to gallons, and price per gallon based on cost per liter, may be obtained from MDA's Food Inspection division, P. O. Box 30017, Lansing 48909.

U-M Hospital Health Fair Scheduled

The University of Michigan Hospital's second annual Health Fair will be held at Briarwood shopping center from 10 a.m. to 9 p.m. Friday, May 2, and Saturday, May 3.

Aimed at preventive health care, the fair will offer the public an opportunity to take tests for high blood pressure and hearing loss, to experience biofeedback and to observe cardio pulmonary resuscitation demonstrations. Special displays and information will be available on arthritis, phobias and nutrition.

Parents may seek advice on how to protect children against heart disease and a height and weight booth will show how to measure skin folds on children to determine degree of body fat.

Special equipment displayed will include a Stryker Circle Bed, infusion device and a cardiac monitor.

There will be a discussion of women's health issues and films on gout, arthritis, medic-alert, kidney disease and warning signs of cancer shown at advertised times in the Community Room during the Fair.

The Fair is sponsored by the Friends of University Hospital and co-ordinated through the Hospital's Community Resources Office, where inquiries may be made at 763-4200.

Netters Lose Two Matches Last Week

Chelsea's netters suffered twin losses last week, to Gabriel Richard and Saline.

Against Gabriel Richard Monday, Chelsea's only point was achieved by Gustavo Lunazzi, who won his match, 6-4, 6-3. Doug Inglis lost to Milt Fuehrer, 7-6, 6-1. Also falling in singles were Scott Prohaska, 6-2, 6-0, and Terry Shonk, 6-0, 6-1.

In doubles, Wilson and Barnes fell, 6-1, 6-2. Haselschwerdt and Morrison and Boyer and Bacon also were beaten.

Tuesday, Chelsea played Saline for the second time and again suffered a defeat. Chelsea, however, won one out of three sets.

The duo of Boyer and Bacon beat their doubles opponents 3-6, 6-4, 6-2. Gustavo Lunazzi lost to Brad Koch, 6-1, 6-1.

Doug Inglis played a fine match but lost in the third set to Tim Brososky.

Scott Prohaska and Terry Shonk both played well, but lost their matches, also.

The doubles team of Wilson-Barnes lost to Aungst-Videcki, 6-1, 6-0. Haselschwerdt-Morrison lost in a tie-breaker to Caulkins and Pogliano, 7-5, 7-6.

Subscribe today to The Standard.

Residential - Commercial
REMODELING
FREE ESTIMATES
ib. V. JENSEN and SON
LICENSED BUILDER
378 Spring Lake Drive
Chelsea, Mich.
PHONE 475-1820



A HUGE SURPRISE PARTY at the Chelsea United Methodist Home Tuesday afternoon honored the 101st birthday of Flora Hodgins, a resident of the home since 1973. Helping her celebrate were friends, from left, Marjorie Schoepf of Clio, Thelma Williams of Frankenthum, Edna Gasche of Mt. Morris and Thelma Ackerman of Clio. Mrs.

Hodgins was born April 29, 1879 in Genesee county. She attended Eastern Michigan University and taught for 28 years before retiring in 1928. A long-time resident of Clio, she was chosen honorary queen of the Clio Centennial in 1973 at the age of 94.

Local Women Attend CWU State Assembly

Local women attending the annual State Assembly of Church Women United in Michigan last week, April 24-26, were Coralee Hoffmeyer, Joy Stacey and Joanne Weber.

Hosted by CWU of Grand Rapids, the assembly featured Dr. Margaret Van Wylen of Holland and the Rev. Marchienne Rienstra of Grand Rapids as keynote speakers. The Rev. Vern Hoffman led an ecumenical panel discussion.

Louise Leonard, regional vice-president for East Central Region attended and spoke to

cerning hunger and world concerns. A Native American training session was also held.

Workshops were presented by Coralee Hoffmeyer of Chelsea and women from all around the state, including Ypsilanti, Traverse City, Jenison, Richland, Lansing, East Lansing and Grand Rapids.

Special sessions were conducted on family relations and the Battered Wife Syndrome. Slides were shown of "The Philippines Today" and "The Church at Work in the Developing World" and discussions were held con-

cerning hunger and world concerns. A Native American training session was also held.

Orthodox church in Grand Rapids. Coralee Hoffmeyer was elected and installed as fourth vice-president for the term 1980-83 at this assembly.

Church Women United is an inter-denominational movement of Christian women designed for spiritual nurture and social action. There are local CWU units in more than 75 Michigan cities.

Advertising revenue pays for costs of producing The Standard. Let the merchant know you appreciate it.

Arrange for the Direct Deposit of your Government Check at our bank and enjoy more free time.



"With Direct Deposit, your Government check goes straight to your personal account. So you go straight to wherever you enjoy being most."

Direct Deposit means you can choose a checking account or a

savings account at our bank for the deposit of your Social Security, Armed Forces and Veterans Administration checks; Government Employee salary checks and Railroad Pension checks. Even many private pension and annuity checks can be deposited directly to your savings or checking account at our bank.

This government approved program saves you time and effort and is free of all cost. Just present your check to us for cashing and from your check, we can secure the necessary information to have subsequent checks sent directly to us and deposited in your account, automatically.

CHELSEA STATE BANK

Member F.D.I.C.

CSB

Main Office
305 S. Main St.

Branch Office
1010 S. Main St.

+ Services in Our Churches +

FIRST UNITED METHODIST CHURCH
The Rev. Marvin H. McCallum, Pastor
Thursday, May 1—
7:00 p.m.—Study and Snack Discussion Group.
Friday, May 2—
6:30 p.m.—Candlelight Dinner.
8:00 p.m.—Chancel Choir Concert.
Sunday, April 27—
9:00 a.m.—Worship service. Crib nursery provided.
10:00 a.m.—Worship service. Crib nursery provided for children up to the age of two. Church school for children ages two through five.
10:30 a.m.—Church school for kindergartners through sixth graders.
10:50 a.m.—Coffee hour in the narthex.
11:00 a.m.—Church school for junior-senior high.
11:00 a.m.—Adult discussion group.
11:50 a.m.—All church school classes are dismissed.
Monday, May 5—
9:45 a.m.—Church Women United Executive Committee meets in Litteral Room.
7:00 p.m.—Bells of Praise.
7:30 p.m.—Work Area on Education meets in Education Building.
Tuesday, May 6—
9:15 a.m.—United Methodist Women Executive Committee meets in Litteral Room.
Wednesday, May 7—
3:30 p.m.—Praise Choir.
7:00 p.m.—Adult Bell Choir.
8:00 p.m.—Chancel Choir.

ZION LUTHERAN CHURCH
Corner of Fletcher and Waters Rds.
The Rev. John R. Morris, Pastor
Friday, May 2—
Church Women United May Fellowship Day, noon to 2 p.m. pot-luck.
Saturday, May 3—
10:00 a.m.—District VBS Workshop here.
6:00 p.m.—L. Bycraft-K. Boritzki wedding.
Sunday, May 4—
9:00 a.m.—Sunday school.
10:15 a.m.—Worship service with Holy Communion. Rev. Robert Trump, guest preacher. Special congregational meeting after worship.
Tuesday, May 6—
4:00 p.m.—Joy-makers, until 5:30 p.m.
Wednesday, May 7—
Michigan District Convention in Kalamazoo, May 7-10.
1:30 p.m.—Lydia Circle meets.
7:45 p.m.—Martha Circle meets.
Thursday, May 8—
9:00 a.m.—Altar Guild.

ST. PAUL UNITED CHURCH OF CHRIST
Dr. William C. Donald, Interim Pastor
Saturday, May 3—
9 a.m.—Church Work Bee.
Sunday, May 4—
9:00 a.m.—Confirmation.
9:00 a.m. and 10:30 a.m.—Church school.
10:30 a.m.—Worship service.
Tuesday, May 6—
7:30 p.m.—Church and Community.
7:30 p.m.—Chancel choir.
Thursday, May 8—
7:30 p.m.—Spiritual Life.

NORTH LAKE UNITED METHODIST CHURCH
The Rev. John Elliott, Pastor
Every Sunday—
10:00 a.m.—Worship service.
10:30 a.m.—Church school for children age three through high school.

NORTH SHARON BIBLE CHURCH
Sylvan and Washburne Rds.
Tom Butterfield Interim Pastor
Every Sunday—
10:00 a.m.—Sunday school. (Nursery available.) Junior church classes.
11:00 a.m.—Worship service.
6:00 p.m.—Senior High Youth meeting. Youth choir.
7:00 p.m.—Evening worship service. (Nursery available.) All services interpreted for the deaf.
Every Wednesday—
7:00 p.m.—Bible study and prayer meeting. (Nursery available.) Bus transportation available: 428-7222.

ST. JACOB EVANGELICAL LUTHERAN CHURCH
The Rev. Andrew Bloom, Pastor
12501 Rietmiller Rd., Grass Lake
Every Sunday—
9:00 a.m.—Sunday school.
10:15 a.m.—Divine services.

ST. JOHN'S EVANGELICAL AND REFORMED CHURCH
(United Church of Christ)
Francisco
The Rev. Ben Mahrie, Pastor
Every Sunday—
10:30 a.m.—Sunday school and worship service.

ST. MARY CATHOLIC CHURCH
The Rev. Fr. David Philip Dupuis, Pastor
Mass Schedule:
Every Saturday—
5:00 p.m.—Mass.
Confessions immediately following Mass on Saturday.
Every Sunday—
8:00 a.m., 10:00 a.m., 12:00 noon—Mass.

CONGREGATIONAL CHURCH
(United Church of Christ)
The Rev. Carl Schwarm, Pastor
Every Sunday—
10:30 a.m.—Worship and Sunday school. Nursery provided for pre-schoolers.

FIRST CHURCH OF CHRIST SCIENTIST
1883 Washtenaw Ave., Ann Arbor
Every Sunday—
10:30 a.m.—Sunday school, morning service.

FIRST ASSEMBLY OF GOD
The Rev. Richard Coury, Pastor
Every Sunday—
9:45 a.m.—Sunday school.
11:00 a.m.—Worship service.
6:00 p.m.—Evening worship.
Every Wednesday—
7:00 p.m.—Christ's Ambassadors. Missionettes. Bible Meditation and prayer.

CHELSEA FREE METHODIST FELLOWSHIP
Meetings at St. Barnabas Episcopal Church
20500 Old US-12
Every Sunday—
3:45 p.m.—Sunday school for all ages.
5:00 p.m.—Worship service.
Every Thursday—
7:30 p.m.—Adult study, Children's CYC program, and youth meeting.

ST. JOHN'S UNITED CHURCH OF CHRIST
Rogers Corners
Every Sunday—
10:30 a.m.—Worship and Sunday school.

GREGORY BAPTIST CHURCH
The Rev. David Brinkman, Pastor
Every Sunday—
9:45 a.m.—Sunday school.
11:00 a.m.—Morning worship.
6:00 p.m.—Young people.
7:00 p.m.—Evening worship.

CHELSEA CHRISTIAN MEN'S FELLOWSHIP PRAYER BREAKFAST
(Non-Denominational)
First Saturday Each Month—
8:00 a.m.—Breakfast.
8:30-10:00 a.m.—Program.

BETHEL EVANGELICAL AND REFORMED CHURCH
(United Church of Christ)
Freedom Township
The Rev. Roman A. Reineck, Pastor
Every Sunday—
10:00 a.m.—Worship service.

ST. BARNABAS EPISCOPAL CHURCH
The Rev. Fr. Jerrold F. Beaumont, B.S.P.
10:00 a.m.—Holy Communion first, third and fifth Sundays and 7:30 p.m. every Wednesday.
10:00 a.m.—Morning prayer, second and fourth Sundays. Church school and nursery every Sunday.
Every Wednesday—
8:15 p.m.—Bible study and discussion groups.
First Wednesday of every month—
Bishop's Committee.
Third Thursday of every month—
Episcopal church women.

CHURCH OF CHRIST
13661 Old US-12, East
Evangelist John M. Hamilton
Every Sunday—
7:30 a.m.—Radio program—WNRS in Saline.
8:30 a.m.—Radio program—WAAM in Ann Arbor.
9:30 a.m.—Bible study.
10:30 a.m.—Worship service. Nursery available.
6:00 p.m.—Sunday evening Bible study.
Every Tuesday—
7:00 p.m.—Women's Bible study class.
Every Wednesday—
7:30 p.m.—Bible study classes for all ages.

CHELSEA CHURCH OF THE UNCOMPROMISING WORD
11452 Jackson Rd.
The Rev. Chuck Clemons, Pastor
Every Sunday—
10:00 a.m.—Sunday school.
11:00 a.m.—Morning worship.
6:30 p.m.—Evening worship.
Every Wednesday—
7:00 p.m.—Midweek prayer and Bible study.

SALEM GROVE UNITED METHODIST CHURCH
3320 Notten Rd.
The Rev. Ronald Brunger, Pastor
Every Sunday—
9:30 a.m.—Sunday school.
10:30 a.m.—Worship service.

FIRST UNITED PRESBYTERIAN CHURCH
Unadilla
Ms. Peggy Hall, Lay-Preacher
Every Sunday—
9:45 a.m.—Sunday school.
11:00 a.m.—Worship service.

FIRST UNITED METHODIST PARKS AND TERRITORIAL RDS.
The Rev. Larry Nicols and the Rev. David Goldsmith, Pastors
Every Sunday—
9:15 a.m.—Morning worship.
10:00 a.m.—Sunday school.

CHURCH OF JESUS CHRIST OF LATTER-DAY SAINTS
(Mormon)
Chelsea Branch
Rebekah Hall
Every Sunday—
8:00 a.m.—Priesthood meeting.
9:00 a.m.—Sunday school.
11:00 a.m.—Sacrament Service.

CHELSEA BAPTIST CHURCH
337 Wilkinson St.
The Rev. Thode B. Thodeson, Pastor
Every Sunday—
10:30 a.m.—Morning worship.
11:00 a.m.—Junior church school.
6:00 p.m.—Evening fellowship.
Every Wednesday—
7:00 p.m.—Midweek Bible study and prayer.

FAITH EVANGELICAL LUTHERAN CHURCH
9575 North Territorial Rd.
The Rev. Mark Porinsky, Pastor
Thursday, May 1—
8:00 p.m.—Choir.
Saturday, May 3—
1:30 to 7:00 p.m.—Evangelism Workshop.
School clean: Losey, Perlick.
Sunday, May 4—
8:45 a.m.—Sunday school, adult class.
10:00 a.m.—Worship service with Holy Communion. Sermon on Deuteronomy 33.
Monday, May 5—
7:30 p.m.—Elders.
Tuesday, May 6—
6:30 p.m.—Confirmation II.
Wednesday, May 7—
9:45 a.m.—Bible Brunch at Abrasses.
4:45 p.m.—Confirmation I.
Thursday, May 8—
8:00 p.m.—Choir.

OUR SAVIOR LUTHERAN CHURCH
1515 S. Main, Chelsea
The Rev. Franklin H. Giebel, Pastor
Broadcast Sundays—
"The Church of the Lutheran Hour."
8:35 a.m.—WIBM, 1450 AM, Jackson.
12:30 p.m.—WYFC, 1520 AM, Ypsilanti.
Every Sunday—
9:00 a.m.—Sunday school.
10:30 a.m.—Morning Worship.
7:00 p.m.—Bible study. Adult inquiry class, "Equipping the Saints."
Every Thursday—
1:00-2:30 p.m.—Bible study on the book of Revelations.

METHODIST HOME CHAPEL
Chaplain Ira Wood
Every Sunday—
8:45 a.m.—Worship service.

WATERLOO VILLAGE UNITED METHODIST CHURCH
8118 Washington St.
The Rev. Larry Nichols and The Rev. David Goldsmith, Pastors
Every Sunday—
10:00 a.m.—Sunday school.
11:15 a.m.—Worship service.

IMMANUEL BIBLE CHURCH
145 E. Summit St.
The Rev. Ron Little, Pastor
Every Sunday—
9:45 a.m.—Sunday school, nursery provided.
11:00 a.m.—Morning worship, nursery provided.
6:00 p.m.—Evening worship.
Every Wednesday—
7:00 p.m.—Family hour, prayer meeting and Bible study.

COVENANT CHURCH
Dr. R. J. Ratzlaff, Supply Pastor
K. of C. Hall, W. Old US-12
Every Sunday—
3:00 p.m.—Church school.
4:00 p.m.—Worship and church time nursery.

ST. THOMAS EVANGELICAL LUTHERAN
Ellsworth and Haab Rds.
The Rev. Paul Puffe, Pastor
Every Sunday—
9:30 a.m.—Sunday school.
10:45 a.m.—Worship service.

CHELSEA HOSPITAL MINISTRY
(Non-Denominational)
Every Sunday—
10:00 a.m.—Morning service, Chelsea Community Hospital Cafeteria.

Good Things in Michigan

Thoughts of "good things growing in Michigan" develop images of bountiful fields and orchards awaiting harvest. There are other agriculture industries not quite as visible but equally important for good health and meal preparation, including the dairy industry.

Milk is the largest single item sold from Michigan farms, accounting for about a quarter of farmers' cash receipts. An estimated 4,793 million pounds of milk was produced in 1978 (latest figures available), according to the Michigan Department of Agriculture. Dairy cows can now produce 72 glasses of milk daily, 300 days of the year. Americans consume an average 288.9 pounds of milk and cream each year—the largest per capita consumption of any food commodity. Michigan dairies also produced 28.5 million pounds of butter, 53.6 million pounds of cottage cheese, 32 million pounds of natural cheese and 34.9 million gallons of ice cream in 1978.

The dairy industry has come a long way since the days of milking cows by hand and sitting on the porch all day churning butter!

Modern milking is done in sanitary milking parlors with machines. The milk is then transported through tubes connected to the milking machines to a bulk holding tank for pick up. Trained MDA inspectors check milking parlors and all milk house equipment for sanitation. Only farms issued a state permit with sanitation approval may supply Grade A milk to dairies.

Retail butter must be manufactured in a commercial creamery and be at least 80 percent milk fat, with no added ingredients except salt or coloring as state and federal standards require. If coloring is added, this must be shown on the label.

Michigan has 15 natural cheese factories, where many of the more than 400 varieties of cheese are produced, including cheddar, Colby, Monterey, Italian, Muenster, brick, cream and farmer cheeses.

Gordon Beaumont Day Set by Domestic Violence Project

Last Monday, April 21, was declared Gordon F. Beaumont Day by the Domestic Violence Project, Inc. in Ann Arbor as part of National Victims Rights Week, April 20-26.

The Domestic Violence Project operates SAFE House, a shelter for battered women and their children, and also the National Technical Assistance Center on Domestic Violence, with 10 regional offices throughout the country.

Gordon Beaumont recently was posthumously awarded the Carnegie Hero Commission bronze medal. The son of the Rev. and Mrs. Jerrold Beaumont of Chelsea, he was killed trying to save the life of an employee being abducted by her former boyfriend.

"We wanted to recognize, commemorate and attempt to reward the heroic acts of citizens within this community," said Kenneth Latta, chairman of the board of the Domestic Violence Project. "We want to recognize the acts of citizens, volunteers and employees alike."

In addition to recognition of Gordon Beaumont Day on April 21, the offices of the Domestic Violence Project were busy providing a week-long series of films and informational projects on domestic violence, including spouse beating, rape and legal recourses.

Telephone your club news to 475-1371

ROBERTS PAINT & BODY



"We do our best to satisfy"

20416 Old US-12 West
Chelsea, Mich.

Ph. 475-1149

Open 8 a.m.-5 p.m. Daily

NOW OPEN TO SAVE YOU 30% OR MORE On Needed Items

New stock coming in weekly.

OFFICE PRODUCTS For Home and Office.

JUDSON FORMPRINT, INC.

120 WEST MIDDLE ST.

FREE PARKING WEST OF OUR BUILDING
Tuesday thru Saturday, 10 a.m. to 5 p.m.



Real Estate

By PAUL FRISINGER

REALTOR

SELLER'S AND BUYER'S MARKET

I'm sure you've heard of a "Seller's Market" or "Buyer's Market." Well, don't be confused if you hear them both used at the same time in the same city or town. They often occur simultaneously.

"Listings wanted — Northside". An excellent example of a buyer's market and seller's market existing simultaneously in the same city.

Whether you're a buyer or a seller, timing and market conditions are vital in your financial planning. Who knows the pulse of the local market best? Your local REALTOR.

Certain locations in the city may be near depreciating areas. "For Sale" signs will be scattered abundantly throughout these areas. Prices remain level or are descending. A definite buyer's market.

Other sections in the same city display few, if any "For Sale" signs and local newspapers carry ads for "House wanted — Northside" or

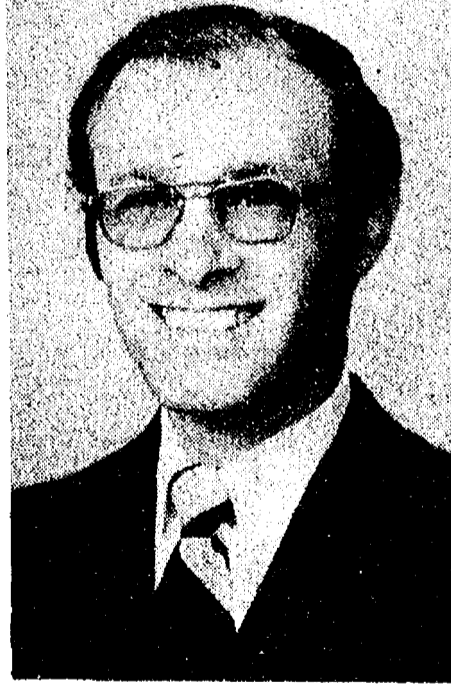
If there is anything we can do to help you in the field of real estate, please phone or drop in at FRISINGER REALTY CO., 935 S. Main St., Chelsea. Phone: 475-8681; evenings 475-2621. We're here to help!

Christian Fellowship of Chelsea

Continues to invite you to join us the first Thursday of every month at 400 Congdon St. in the school gym 7:30 to 9 p.m. to pray, sing and share.

We pray for healing also.

The same feelings, Different expression.



DONALD A. COLE
Director

Leo Tolstoy writes that every happy family is happy in the same way. Bereaved families also share similar emotions but are individual in their expression of those emotions.

By keeping our service flexible, we help you arrange a final tribute that expresses your grief in ways meaningful to you.

BURGHARDT-COLE CHELSEA FUNERAL CHAPEL

214 East Middle Street
Phone 475-1551



Member, The International Order of the Golden Rule

The Bible - The Light from Heaven

Speaks about the cross of Christ. Familiar to us all is the hymn that begins, "On a hill far away stood an old rugged cross, the emblem of suffering and shame, and I love that old cross where the dearest and best, for a world of lost sinners was slain." Let us consider the scriptural significance of that event. Above all, the cross signifies the love of God. In Romans 5:8 is written, "But God commendeth his love toward us, in that, while we were yet sinners, Christ died for us." In 2 Corinthians 5:21, the apostle Paul wrote, "For he hath made him to be sin for us, who knew no sin, that we may be made the righteousness of God in him." Secondly, the cross is significant in that it magnifies the terribleness of sin. Justice and mercy is shown in the Saviour's death. If God had not demanded punishment for the transgression of His laws, He would not be practicing justice, and the Bible speaks about a just God. He is also a God of mercy. (2 Corinthians 1:3; Ephesians 2:4). In 1 Peter 1:3 we read, "Blessed be the God and Father of our Lord Jesus Christ, which according to his abundant mercy hath begotten us again unto a lively hope by the resurrection of Jesus Christ from the dead." At the Chelsea Church of Christ we believe and preach a cross-centered gospel. We would consider it an honor to have you come and worship with us.

CHELSEA CHURCH OF CHRIST
13661 Old US-12
Chelsea, Michigan

475-8680
475-8689

115 PARK ST.
CHELSEA, MICH.

MAYER AGENCY

(of Springer-Kleinschmidt Agency Inc.)

Your Local Independent Insurance Agency providing dependable protection and prompt claim payment through 10 of the nation's leading insurance companies.

HOME - AUTO - BUSINESS INSURANCE



Sheridan W. Springer
Ruth DeVino

Charles A. Kleinschmidt
Donald S. Peck

Micky Quackenbush

Letters to the Editor

To the Editor:

On behalf of the Lions Club we wish to express our sincere thanks to the entire Chelsea community for its unselfish support and generous contributions which made our fourth annual White Cane Week fund-raising drive an overwhelming success. In addition, special thanks to Walt Leonard and The Chelsea Standard for their continued support in reporting our Lions projects and activities.

The Lions Club hopes that the community understands and appreciates what everyone's help means to us. We recently received three letters, from Leader

Dogs for the Blind, Michigan Eye Bank, and the Michigan Braille Transcribing Service, all expressing gratitude for the support of Chelsea's Lions in their various projects.

Again, our warmest thanks to all the kind people who care about those who are less fortunate.

Chelsea Lions Club.
Brent Michelsen, President.
Dave Scriven, 1st Vice-President.
Chuck Murphy, Sight Conservation Chairman.

Telephone your club news to 475-1371

Girls Softball Team Wins 4

Four big wins led off the season for Chelsea's varsity softballers this past week.

In non-league competition, Chelsea swept a double-header from Pinckney last Saturday, April 26.

Nanette Push and Anita Powell were both right on target, striking out 17 Pirate sluggers in the course of the twin bill. Both Powell and Push were credited with wins to keep their pitching records perfect in the young season.

In the first game, Chelsea's offense exploded with nine hits off starter Tracy Morris, to pace the Bulldogs to a 10-1 rout. Morris hurled a fine game but lacked the team support necessary to stop Chelsea.

Push struck out 12 in seven innings and walked three while yielding only two base hits to the Pirates. Collecting two hits each for the Bulldogs in that first contest were Jennifer Ringe, Patti Hume and Push.

In the second game, Anita Powell got her first start of the season and responded to the call by fanning five Pirates and walking only two. Chelsea's offense collected 17 runs behind Powell, while she held Pinckney to just one run in the third inning.

In SEC competition, the varsity blasted Ypsilanti Lincoln, 20-1, and blanked Dexter, 17-0, last week.

Push, senior co-captain, was the winning pitcher in both games. She fanned 21 hitters in her first 10 innings of work.

Seniors Kim Wood, Patti Hume and Amanda Schwarze also made valuable contributions in Chelsea's first two SEC wins. Co-captain Hume went four for six at the plate, good for a .667 batting average in the SEC. Kim Wood leads the Bulldogs in extra-base hits and is connecting with the bat at a .550 clip in the league.

Centerfielder Schwarze has scored five times in her first two league games.

"It's super to see our seniors having great starts," said Coach Bill Wescott. "I know they have the ability to get the job done."

Chelsea is scheduled to take on Saline this Friday, 4:30 p.m., at home, and then meet Brighton in a home double-header Saturday morning beginning at 11 a.m.

Chelsea and Milan are now tied for first place in the SEC, with two wins and no defeats each. Saline and Jackson County Western are each at 1-1 and Dexter and Lincoln have each lost two SEC contests with no wins.

Cong. Pursell Speaking in Ann Arbor

Congressman Carl Pursell will be speaking in Ann Arbor Friday, May 2, 7:30 p.m. at the Washtenaw Intermediate School District on Wagner Rd.

Congressman Pursell is the author of legislation for gifted and talented children. He feels that gifted and talented students do not necessarily function well in the regular classroom and often need programs designed to allow them to move ahead of their age group academically, rather than to study concepts they have long since mastered.

Friday will be an opportunity for parents who support legislation for gifted and talented in local schools to show their support.

If you have difficulty hearing when your back is turned to a speaker you may be exhibiting one of the signs of possible hearing loss, warn hearing specialists.



BEACH MATH CHAMPS: Qualifying to go to the state math test at the regional exam last Saturday were Beach students, front from left, Mary Ann Richardson, 7th grade; Chris Schluppe, 6th grade; rear, Steve Kropf, 7th grade and Kevin Colombo, 8th grade. The four participated in the Regional MCTM Math Test at Eastern

Michigan University and scored in the top 25 in their grade levels. Kevin, Mary Ann and Steve were state qualifiers last year. Chris, taking the test for the first time, finished fourth. The State Test is May 17 at Central Michigan University in Mt. Pleasant.

Carr Cautious After Briefing By President

Sixth District Congressman Bob Carr said he was "heartened" but not entirely convinced by forecasts of optimistic economic news for farmers offered by President Carter at a White House briefing Wednesday.

Carr, a member of a small group of farm-state Democratic Congressmen invited to the President's briefing, said the meeting featured an unusually candid exchange about the plight of American farmers.

"At some points, we really gave it to the President for his farm policies," Carr said. "The President held his ground well and insisted better times were ahead for farmers."

Carr said President Carter predicted a general economic upturn for farmers by mid-summer, when the President said inflation and interest rates should begin to ease. Further, Carr reported, the President said prices of farm products should rise. Among the specific projections, the President said corn would increase by 40 cents a bushel, soy beans 60 cents a bushel, and hogs \$10 by the end of the year.

"The President indicated his strong concern for farmers but tried to point out that not all of our current farm problems are linked to the embargo on shipping grain to the Soviet Union, one of the measures invoked to demonstrate U. S. anger about the takeover of Afghanistan," Carr added. "I agree that while the embargo has caused some substantial inconvenience for farmers, it can't be blamed for the general economic decline plaguing farmers and non-farmers alike."

Said Carr: "I'm heartened by the President's message but I still hear a lot of farmers in my district complaining of a loss of income that threatens their vitality and even their ability to continue farming. So I'm not going to simply sit back and wait for the good economic news to start rolling in. Something has to be done soon."

Carr said he joined the majority of Congressmen present at the briefing in backing increased price supports and better loan rates for farmers.

Frosh Baseball

May 3—Brighton (DH-A) 11 a.m.
May 5—Milan (DH-A) 4:30 p.m.
May 7—Stockbridge (A) . 6 p.m.
May 10—Howell (DH-H) . 11 a.m.
May 12—S. Lyon (A) 4 p.m.
May 14—Novi (A) 4 p.m.
May 15—Tecumseh (A) 4 p.m.
May 17—N'west (DH-H) . 11 a.m.
May 21—Stockbridge (H) 4:30 p.m.
Coach: Tom Fletke

The Office of the Inspector General (OIG) in the U. S. Department of Labor was established in October 1978 to prevent and detect fraud and abuse in departmental programs and operations.

HOST Carpet Cleaning
May is spring cleaning time! Your carpeting deserves special attention. We recommend Host, the new method of cleaning carpets without water. The carpet is dry and ready to walk on immediately. Use our Host Electric Up brush. It's easy. Clean 40 sq yds. only \$9.95. Phone for information.

MERKEL BROTHERS
Phone 475-8621



AMY HUME AND SHELLY WEBER are two reasons the Chelsea JV has dominated most of its opponents thus far this year. Weber, right, pitcher Amy Unterbrink's catcher, has turned in three excellent outings. She has cut runners down on the basepaths and controlled Unterbrink's occasional wild pitches with runners aboard. Hume has welded the big bat for Chelsea, blasting a two-run homer in a Chelsea 10-run inning against Lincoln and a key, lead-off double in a contest with Pinckney's Pirates.

MAGNAVOX

Clean-up Clearance

SALE

We're cleaning up to get ready for the new models... for a limited time only! We're passing fantastic savings on to you during our Clean-Up Clearance Sale.

- **SAVE** On TV's, Stereos, VCR's and MORE!
- **LOWEST PRICE NOW!**
- **HURRY!** Limited Quantities!

COUPON

Spring Cleaning Time Is Now!

Bring this coupon in and receive a **FREE** Wisk Broom. (1 per customer)

To the first 25 people.

COUPON

QUALITY IN EVERY DETAIL

MAGNAVOX

WE MAKE STAYING HOME FUN!

HEYDLAUFF'S

113 N. Main St., Chelsea

Ph. 475-1221

Ad Taken Until 5 p.m. Monday

PUT IT IN THE WANT ADS FOR RESULTS

Just Phone 475-1371

Washtenaw County's Busy Marketplace . . . Quick, Economical Results . . . Give 'em a try!

Automotive 1	Automotive 1	Farm & Garden 2	For Sale 4	Garage Sale 4b	Real Estate 5	Real Estate 5		
<p>AUTO PARTS from '72 Buick 350. Intake manifold with 2 barrel carb. Head tappet covers, timing gear, water pump, oil pan, power steering pump, fuel pump, damper pulley fly wheel and rocker arms. Ph. 475-7236. Ken Cobb. x47</p> <p>1978 SUBARU 4-wheel drive wagon. AM, p.s., p.b., \$4,500. Ph. 498-2233 after 6 p.m. x48-2</p> <p>1978 Oldsmobile Supreme Brougham. 1977. Air conditioning, p.s., p.b., tilt wheel, cruise control, AM-FM-tape and much more. Excellent condition. Ph. 475-8363. x47</p> <p>TERMINATED LEASES At Wholesale or Below Prices to Buy or Re-Lease</p> <p>HERE IS AN EXAMPLE: 1978 THUNDERBIRD . . . only \$3460.</p> <p>'79 FORD Pick-Up '78 LTD 4-dr. '78 RANCHERO '77 LTD II 2-dr. '77 LTD II Station Wagon</p> <p>REPOSSESSIONS</p> <p>'78 FORD 1-ton Parcel Delivery '79 FORD 1/2-ton 4x4 '78 FORD Econoline Van</p> <p>See Us About Re-Leasing or Purchasing Today</p> <p>PALMER FORD CHELSEA 475-1301 x47</p> <p>Used Trucks</p> <p>'76 DODGE B-200 van. 318, auto., p.s., p.b. . . . \$1795</p> <p>'73 DODGE W-200. 318, auto., p.s., p.b., white spoked wheels, 4-wheel drive. . . \$1395</p> <p>'73 DODGE C-800 tractor. 413, 5-speed trans., 2-speed rear axle, air brakes, low mileage 6 to choose from. . . \$2995</p> <p>Quality Used Cars</p> <p>'77 PLYMOUTH Fury 4-dr., 318, auto., p.b., p.s., air, 26,639 miles. . . \$2195</p> <p>'76 DART 4-dr. 6-cyl., auto., p.s. . . \$2495</p> <p>'76 FORD Elite 2-dr. V-8, auto., p.s., p.b., air, cruise, stereo . . \$2295</p> <p>'76 CORDOBA, 318, auto., p.s., p.b., leather buckets. . . \$2695</p> <p>'75 DART 4-dr. 225, auto., p.s., One owner . . . \$1695</p> <p>'74 JIMMY 4-wheel drive. 250, auto., p.s., p.b., new tires . . . \$1995</p> <p>'72 CHRYSLER Newport 2-dr. V-8 auto., p.s., p.b. . . \$895</p> <p>'79 HONDA XR-80 motorcycle. Good condition . . . \$475</p> <p>Village Motor Sales, Inc. CHRYSLER - DODGE PLYMOUTH - DODGE TRUCKS Phone 475-8661 1185 Manchester Rd., Chelsea Hours: 8 a.m. to 5:30 p.m. Tues. thru Fri. Until 8 Monday Saturday 9 to 12 x47if</p> <p>FOR SALE - 1975 Buick LeSabre, power steering, power brakes, 4 door, new shocks and exhaust. \$1,000. Ph. 475-9101. Eves: 475-1469. x26if</p> <p>1976 DODGE VAN, B-200. Sport Royal, p.s., p.b., air cond., cruise control, Michelin radials, 36-gal. fuel tank. 46,000 miles, like new. Price \$3750. Call 475-1495. x47-2</p> <p>1974 BUICK LeSabre. 4 door, power and air, one owner. Good condition. Plus two snowtires, mounted. \$900. 605 Grant St. Ph. 475-1216. -47-2</p>	<p>BODY SHOP COMPLETE FULL TIME Estimates Available PALMER FORD 222 S. Main 475-1301 40if</p> <p>SEE TOM DAULT at Rampy Chevrolet for your best deal in new or used cars and trucks. Ph. 663-3321 or 475-2830 40if</p> <p>1972 FORD station wagon. Excellent running condition. New brakes, \$600. Ph. 475-2420. x47</p> <p>1977 DODGE PICK-UP - Custom 150, excellent condition, sliding window, vinyl covering for back. 35,000 miles. V-8 engine. Power steering, power brakes, stereo and tape deck. \$2,500. Ph. 475-7420 after 5, anytime week-ends. x47</p> <p>CHEVILLE - '72, 2-door, 50,000 miles good tires, new battery, cheap transportation. \$450. Call 475-7271. x47</p> <p>Complete Body Shop Service FREE ESTIMATES Contact Walter Steinhilb Formerly of Westland Collision</p> <p>Faist - Sprague Buick - Olds, Inc. 475-8664 x23if</p> <p>Demos</p> <p>'80 ASPEN Coupe, 6-cyl., auto., p.s., cruise, stereo. . . . SAVE</p> <p>'80 OMNI Coupe, 4-speed, air, stereo, cruise, 2-tone SAVE</p> <p>'80 CORDOBA, 225, auto., p.s., p.b., air, stereo, cruise, tilt, leather. . . . SAVE</p> <p>'80 VOLARE 4-dr. 225, auto., p.s., p.b., air, cruise, AM-FM SAVE</p> <p>Factory Officials Cars</p> <p>'79 CHRYSLER Newport 4-dr., 318, air, 60-40 seat, cruise, tilt, 2 to choose from . . . \$5295</p> <p>'79 ASPEN wagon, 318, auto., p.s., p.b., 60-40 seat, air, cruise, AM/FM . . . \$4995</p> <p>'79 DODGE D-200 pick-up, 318, auto., p.s., p.b., air, cruise, Adventurer pkg. 5,048 miles \$5195</p> <p>'78 VOLARE 4-dr. 6-cyl., auto., p.s., p.b., air, 40, 697 miles . . . \$4695</p> <p>Village Motor Sales, Inc. CHRYSLER - DODGE PLYMOUTH - DODGE TRUCKS Phone 475-8661 1185 Manchester Rd., Chelsea Hours: 8 a.m. to 5:30 p.m. Tues. thru Fri. Until 8 Monday Saturday 9 to 12 x47if</p> <p>Motorcycles 1a</p> <p>500 YAMAHA street-bike, 1974 model. Price \$520. Ph. 475-1963. 48-2</p> <p>1970 HONDA 350 - Good condition, \$295. Phone after 5 p.m., 475-7285. x47-2</p> <p>Farm & Garden 2</p> <p>SEE US for your bulk lawn seed needs. Two new mixtures available this year. Cole's Elevator Co., Inc., Gregory (313) 498-2735. x51-9</p>	<p>GARDENS PLOWED - Call 428-8896 after 7 p.m. x48</p> <p>FOR SALE - John Deere Model A tractor; New Idea No. 5 corn picker; 2-hole pig feeder. Ph. 1-517-851-8434. x47-3</p> <p>TOP SOIL for sale. Ph. 475-2097. 48-3</p> <p>GARDEN TILLING - Free estimates. 605 Grant St. or call 475-1216. -47-2</p> <p>LARGE GARDEN SPACE for rent. Will divide. Ph. 475-9772. -47-2</p> <p>FIRST CUTTING HAY and wheat straw. Ph. 475-2154. x47if</p> <p>ATTENTION FARMERS - Why pay more for seed corn? We have proven Gries Hybrid Seed Corn, 85-, 95-, 100-day maturity. All medium flats. 50-lb. unit, \$25. Cole's Elevator Co., Inc., Gregory, Ph. 498-2735. x51-9</p> <p>GARDEN TILLING with our Troy Bilt rototiller. Gardens up to 5,000 square feet. 475-9225. x50-4</p> <p>CEDAR FENCE POSTS, LUMBER FOR FENCING Wire and Wood Fencing Barnwood for interior paneling, hardwood and softwood lumber, creosoted and pre-treated lumber. Landscaping timber, Wolmanized landscaping timber, patio stones all sizes available.</p> <p>Free estimates for fencing installations!</p> <p>A&S SUPPLY Phone 994-0624 x46if</p> <p>PIONEER SEEDS for sale - Base your seed corn decision on performance, not promises. Pioneer brand hybrids speak for themselves at harvest time. Also, alfalfa and Sil-Bac silage inoculant! Contact your Pioneer man, Keith Broadbury, 10065 Easton Rd., Dexter. Ph. 475-8316. 46if</p> <p>ROTOTILLING - Phone 475-1005. 51-5</p> <p>HAROLD TRINKLE & SONS 947 N. STEINBACH RD., DEXTER Ph. 475-8992</p> <p>HAY - STRAW SEED CORN Golden Harvest Funk's G - Jacques</p> <p>BALER TWINE AMERICAN AG PRODUCTS Prolex Protein Extender Moisture Tester Acid Applicators x38if</p> <p>LAWN & GARDEN FERTILIZER - 12-, 12-12, 16-16-16 and 6-24-24 for potatoes. 50-lb. bags; also all-purpose lawn and garden lime, can be spread by hand or in your small spreader. Cole's Elevator Co., Inc., Gregory (313) 498-2735. x51-9</p>	<p>KEEP carpet cleaning problems small - use Blue Lustre wall to wall. Rent electric shampooer, \$2. Chelsea Hardware. 47</p> <p>2 LOUNGE CHAIRS - Black, tilt back. In good condition. Ph. 475-2749. -47</p> <p>CLEAN, soft, fluffy dry carpets. That's what you get when you clean them with HOST. Rent the HOST machine. Merkel Home Furnishings, Chelsea, 475-8621. x47</p> <p>BELL TRUMPET with case. Excellent condition. Must sell. Bargain price. Ph. 475-2855. x47</p> <p>FOR SALE - Refrigerator, \$50. 2 box springs, twin size, like new, \$20 each; wicker headboard, \$10. Ph. 426-3807. x47</p> <p>GOOD NEW and used clothing for men, women and children. Daisies Don't Tell ReSale Shop, 107 W. Main, Pinckney, next to pharmacy. x48-2</p> <p>GARDEN TRACTOR - 10 h.p. International with 42" mower. Excellent condition. \$1,000 or best offer. Ph. 475-8777. x47if</p> <p>ESTATE SALE - Hundreds of items priced to sell. Friday, May 2, 10-6, Saturday, May 3, 9-5, Sunday, May 4, 10-3. 5675 Dexter-Pinckney Rd., Dexter. x47</p> <p>ARE YOU TIRED of the high price of gas? Would you like to increase your gas mileage and clean your fuel system in one easy step. Try Mix-Go gas treatment. Satisfaction guaranteed. For more details contact Paul Herrst, 475-2295. x51-5</p> <p>PLANNING A WEDDING? Graduation? Let us handle your liquor and beverage needs. Dexter Party Store. Ph. 426-3828. x43if</p> <p>CARPETING Discontinued numbers, ends of rolls, in many colors and sizes at cut rate prices. Nearly 100 pieces to select from.</p> <p>MERKEL BROS. 31f</p> <p>ASHLEY WOODSTOVES - Hackney Hardware, Dexter. Ph. 426-4009. x21if</p> <p>FIREWOOD CUT and split. Two sizes, face cords and full cords, delivered. Ph. 428-8229. x25if</p> <p>ATRIUM PATIO DOOR - 5 ft., opens right side, \$200. Ph. 426-2181. x47-2</p> <p>WEDDING STATIONERY - Prospective brides are invited to see our complete line of invitations and wedding accessories. The Chelsea Standard, 300 N. Main. Ph. 475-1371. 8if</p> <p>NEW FORMAL GOWN, off-white color trimmed with lace. Ideal for dances, weddings, etc. Never worn. Size 9-10. Ph. 475-1431! x46if</p> <p>MICHIGAN CERTIFIED SEED - Mariner seed oats, 4 varieties soy bean seed. Broble Farms, Britton Mi. 49229. Ph. (517) 451-4010 or (517) 423-5663. x34if</p> <p>FIREWOOD - Split Oak, seasoned for 2 years. \$35 face cord. Dave, 475-7494. x42if</p> <p>UPRIGHT FREEZER, 22 cu. ft., \$175. electric range, \$30; zig-zag sewing machine, cabinet model, \$75. Ph. 475-7630. 42if</p> <p>BERRY PLANTS Strawberry; red, black and purple raspberry; red and black currants; gooseberries, blueberries, rhubarb and asparagus roots.</p> <p>Makielski Berry Farm 7130 Platt Rd. Ypsilanti 434-3673 429-9355 8 a.m.-7 p.m. Sat. and Sun. 4 p.m.-7 p.m. Daily x48-4</p> <p>BOLENS 10.50 tractor. Has mower, snowblower. Good condition. \$1,100. Also, dehumidifier for sale. Ph. 475-1676. x47-3</p> <p>BLACK DIRT for sale. Tested and proven excellent for gardens and lawns. Six yards delivered, \$35. Ph. 428-7784. x44if</p>	<p>FRIDAY, Saturday and Sunday. May 2-3-4 only, 10 a.m. to 5 p.m., 521 W. Middle St., Chelsea. 9"x12" oval rug, silver turquoise jewelry, twin mattresses and box springs, books; old canning jars, patterns, children's clothes, toys, wooden ladder, old, furniture, old TV and miscellaneous. x47</p> <p>YARD SALE - 1219 Meadow Lane, west off Wilkinson, Fri. & Sat., May 2, 3, 9 a.m. to 4 p.m. x47</p> <p>GARAGE SALE - We have soup to nuts. 8317 Clear Lake Rd., just up from Village Market, Waterloo. Friday, Saturday 9-7</p> <p>HUGE NEIGHBORHOOD GARAGE SALE - Friday and Saturday, May 2-3, 9 to 5. Antique kitchen cupboard, antique square table, gold colonial couch, green couch, trestle table and benches, 2 braided rugs, CB accessories, 17' boat with 115 Evinrude, air conditioners, many baby items, playpen, clothes, car seats, bathtub, children and adult clothes, fabric, dishes, and many other household items, many toys, plumbing supplies, rear 3-point hitch White rotary tiller for 10-16 h.p. lawn tractor, 17120 Boyce Rd. (north of N. Territorial and M-52). For information call 498-2333. -47</p> <p>HUNDREDS OF HARIQUINS, 6 for 100, also Hariquins presents, westerns and other paperbacks, collectible comic and hardbacks, beer signs and lots of misc. Fri. and Sat., May 2-3, 8:30 to 5:30, 912 S. Union, Grass Lake. x47</p> <p>KITCHEN CABINETS, counter, vanity, tub, doors, etc. Sat., May 3, 9 a.m. to 1 p.m. 621 W. Middle, Chelsea. x47</p> <p>GARAGE SALE - May 3-4, 9 a.m.-4 p.m. 20' boy's bike, 12" convertible bike, both in excellent condition, large-size women's clothing, excellent condition, wedding dress and veil, size 10, infant's and children's clothing and toys, many miscellaneous items. Cash only, please. 9165 Horseshoe Bend, Carriage Hills subdivision, Dexter. x47</p>	<p>FRISINGER REALTY CO. 935 S. Main St. Eves: Herman Koehn 475-2613 Paul Frisinger 475-8681 Bob Koch 426-4754 Ray Knight 475-9230 Dolly Alber 475-2801 Paul Erickson 475-8111 George Frisinger 475-8681 x47if</p> <p>10641 WATERS THE STATELY old Buss family farm house is waiting for you and your family to occupy it. Enjoy the country life while making this house a home. Located between Chelsea and Ann Arbor. Land contract. \$87,000. Open Sunday. For details, call Maizie Real Estate One, 995-1616 or 665-7904. x47-2</p> <p>10 ACRES - 4-bedroom, 2-story older home. Small barn, chicken coop, fruit trees, raspberries. Grass Lake area, close to I-94. Transferring out of state. \$49,900. Ph. 517-522-5256. 48-2</p> <p>CHELSEA NEW 2-STORY, 3-bedroom, 2 1/2-bath with ceramic tile. Living room, dining room, family room with fireplace, large kitchen with range. Dishwasher and disposal. Basement, 2-car attached garage with automatic door opener. Walk to schools. 475-9576 evenings. x46if</p> <p>FOR SALE IDEAL COMMERCIAL PROPERTY IN DEXTER (with River Frontage) BUILDINGS POLE BARN IDEAL FOR ANY BUSINESS PRICE IS RIGHT PHONE 1-878-3970</p> <p>C E HOLMBERG REAL ESTATE 1230 M-36 PINCKNEY x43if</p> <p>HOUSE FOR SALE in Tecumseh by owner. 4-bedroom large home, 2-car garage attached, large yard. Easy terms. Land contract possible. Ph. 1-(517) 423-4651 or (313) 475-8324. x47-2</p> <p>CLEAN AND SHARP 3-bedroom rancher. 2-car garage, finished basement. On one acre. Chelsea-Stockbridge area. Also, nice 2-bedroom mobile home on one acre, ideal for starter or retirement home. Call Marcella McDaniel, Century 21-Key. 517-589-9798. x47-2</p> <p>THORNTON 475-9193 BEAUTIFUL COLONIAL - 4 bedrooms, fireplace. Landscaped lot with many trees. Private access to North Lake. Land contract \$109,000. EVES . . . OR . . . Darla Bohlender . . . 475-1478 . . . OR . . . Curt Farley . . . 475-7643.</p> <p>PERFECT SIZE - 3-bedroom home featuring fenced back yard. 2 1/2-car garage. Nice neighborhood close to Elementary. \$54,800. EVES . . . Lang Romsay . . . 475-8133 . . . OR . . . George Knickerbocker . . . 475-2646.</p> <p>NEW LISTING - 3-bedroom home on 3-plus acres. Family room fireplace. Excellent condition. Great for you-ahnic lovers! \$94,900. EVES . . . Helen Lancaster . . . 475-1198 . . . OR . . . Mark McKernan . . . 475-8424.</p>	<p>WEBER HOMES 475-2828 475-9258 x47</p> <p>WATERLOO REALTY WE WOULD LIKE TO SELL YOUR HOME! Please Call Us for an Appraisal.</p> <p>CHARMING VICTORIAN STYLE 5-bedroom home. Natural oak woodwork, 2 fireplaces, 1 1/2 baths, living room, formal dining room, large kitchen. Heated garage and workshop. On double lot in the Village of Gregory. Zoned "Commercial." 20 min. to Chelsea. \$65,000.</p> <p>INCOME OPPORTUNITY - Currently licensed as adult care home for 12 residents. Red brick mansion on 11 acres in Waterloo Rec Area. Spacious private apartment with fireplace for owners, plus large second apartment for in-laws. Good access to I-94. 25 min. W. of Chelsea. \$118,000 includes business and real estate.</p> <p>2 ACRES Sunny and level with septic tank, drainfield, well and electric on property. Close to Village of Munith, good access to M-106. \$9,500.</p> <p>6 FRUSTIC ACRES on blacktop road and fronting on good fishing lake. Marsh and woods. Excellent for log type home. Convenient access to I-94. 20 from Chelsea. \$16,500, land contract possible.</p> <p>BEAUTIFUL LAKE COLUMBIA Large corner lot overlooking lake. Park approved. Convenient and well maintained private park lake access. \$6,500.</p> <p>WATERLOO REALTY 355 Clear Lake JOANN WARYWODA, BROKER Phone 475-8674 Evenings and Sundays Sue Lowe 1-517-522-5252</p>	<p>Carl Johnson Realty 125 E. Main St., Northville Ph. 349-3470 x47</p> <p>Pierson & Riemenschneider 475-9101 NEW LISTING - 2-bedroom retirement or starter home. Hardwood floors, extra deep lot, good garden area, and gas heat. ERA Warranted. \$45,000.</p> <p>NEW LISTING - Comfortable 3-bedroom home on Cavanaugh Lake. Good size living room with lots of windows, Franklin stove appliances (new last year) included. Chelsea schools. L/C terms. \$48,900.</p> <p>VACANT LAND - 2 acres offers pleasant hillside building site, 10,000, 7.5 acres borders state land, nicely rolling, \$18,000. 10 acres in a beautiful rural area of new homes, 1/2 mile off paved road, \$22,900. 12 acres 3 miles north of Chelsea, \$24,000.</p> <p>Pierson & Riemenschneider 111 Park St. Chelsea Eves: Dol Queenan 475-1819 Marilyn Chasteen 475-2934 Jeanene Riemenschneider 475-1469 John Pierson 475-2064 Norma Kern 475-8132 47if</p> <p>Visit Our Wicks Model Home OPEN HOUSE at 5201 Brooklyn Rd. (M-50 S.E. of Jackson) Mon.-Thurs. 1-5 Sat. & Sun. 2-5 (Anytime By Appointment) Calloway Const. 1-517-764-4400 or 1-517-563-2930 x49if</p>	<p>Animals, Pets 6 SMALL LOVING DOG, Dachshund, needs new home with children. Ph. 475-2821, after 5 p.m. x47</p> <p>GERMAN SHEPHERD PUPPIES, A.K.C. registered, 1 male, 1 female, 6 wks. old, black and tan, \$150. Ph. 475-7630. x47if</p> <p>WOODSTOCK KENNELS 18531 Bush Rd. Ph. 475-1794 Inside and Outside Heated Runs Separate Housing for Cats Love Provided Free 30if</p> <p>GOLDEN RETRIEVER German Shepherd, mixed puppies, excellent temperament, 6 weeks, \$5 ea. Ph. 475-2806 evenings and week-ends. x48-2</p> <p>Lost and Found 7 COON HOUND LOST in Chelsea-Dexter area. Body white, face, light brown and white, brown spot on tail, female. Answers to name of Hildy. Green Manchester Clinic tag on silver collar. If you know the dogs whereabouts dead or alive, please phone 475-8422. x44if</p> <p>FOUND Diamond cocktail ring. Owner write, describing structure, approximate value. State your telephone number and address. Must pay for expenses and appraisal cost. Write Chelsea Standard, Box AP-24, Chelsea, Mich. 48118. x47-2</p> <p>LOST Gray and white cat in vicinity of Blind and Half Moon Lake. Dear family pet. Please call 475-9569. 48-2</p> <p>Telephone your club news to 475-1371</p>

Your Approval

is the cornerstone of our business

Staffan Funeral Home
"Funeral Directors for Four Generations"
124 PARK STREET PHONE 475-1444

LITTLE WANT ADS! BIG PLUSES FOR BIG RESULTS!

Help Wanted 8

CHELSEA WOODSHED
Apply in Person For
WAITPERSONS
COOKS
HOSTESS
113 S. MAIN, CHELSEA
x48-2

ARE YOU
INTERESTED IN A POSITION that needs no experience. Company will train if hired. Starting salary \$1225 a month guaranteed. Bonus and other benefits. High school education and automobile required.

Call 475-2515
Thursday and Friday only.
10:00 to 3:00 p.m.

DIRECTORS — For men's softball league and Connie Mack/Babe Ruth leagues. Call Chelsea Recreation Department, 475-9131; ext. 64, between 8 a.m. and 12 noon. x47

DO YOU NEED extra money? A part-time or full-time job? To be your own boss with unlimited earnings? For appointment contact Paul Herris, 475-2295. x51-5

CHELSEA A & W is looking for an outgoing, enthusiastic, full-time waitress. Hours are Monday through Friday, 10 a.m.-4 p.m. Apply in person only at A & W, M-52, Chelsea. x47-2

WAITRESS WANTED, full- or part-time. Apply in person to the manager Country Kitchen Restaurant, 8128 Main St., Dexter. x23f

SUBSTANTIAL EARNING, taking short phone messages at home. Ph. 1-(312) 742-6663 Ext. 2051. x31f

NURSES AIDES — Needed immediately. If you have one year of recent experience in hospital or nursing home and wish to choose your own hours and work near your home, call Medical Personnel Pool at 994-4200. x42f

RN'S, LPN'S
Needed Immediately
TOP WAGES
FLEXIBLE HOURS
Choice of Assignments
Part-time and Full-time Available

MEDICAL PERSONNEL POOL
320 N. Main
Ann Arbor, Mi. 48104
Ph. 994-4200
x41f

SECRETARY
IMMEDIATE OPENING in our nursing service department. Requires good skills in typing, shorthand and general office procedures.
Hours, Monday through Friday - 8 a.m.-4:30 p.m.

MERCYWOOD HOSPITAL
663-8571 - Ext. 240
x47-2

NEED A LIVE-IN COMPANION for elderly lady in neighboring town. Room, board and wages furnished. Write Chelsea Standard, AP-30, Chelsea, Mich. 48118
x46f

Work Wanted 8a
WANTED — Job to care for elderly person in their home. Ph. 475-1144.
x48-2

WANTED — Yard work by reliable high school boy, Steve Cattel, Ph. 475-8488.
x48-3

Baby Sitter 9
BABYSITTING done in my licensed home, 5 days a week, ages 6 weeks to 5 years. Ph. 475-1438, ask for Linda.
x48-4

EXPERIENCED BABYSITTER would like to watch your child days until 5 p.m. Have one child of my own. Please call days, 475-7156.
x47-2

WANTED — Mature responsible person to care for pre-school son. Two evenings per week. M/F. Ph. 475-8901.
x48-2

BABYSITTING — My home. Ph. 426-2617.
x47

BABYSITTING in my home on Jackson Rd. Nice for mothers working in Ann Arbor area. Call evenings, 475-9269. Ask for Debbie.
x48-2

Wanted 10
WANTED — Live-in companion. Elderly lady. Manchester area. Salary negotiable. Ph. 428-8114.
x48-2

ORIENTAL RUGS
and
TAPESTRIES
WANTED
Will Pay Top Prices
For Used and New.

PERSIAN HOUSE OF IMPORTS
320 E. Liberty, Ann Arbor
Ph. 769-8555 or 995-7597
x47-2

ONE TO THREE ACRES commercial property in immediate area of Chelsea. Include location and price, 621 S. Forest Ave., Ann Arbor 48104, 761-1211.
x48-2

Wanted 10

FRONT-END LOADER for parts. Need for an AC/WD. Ph. 475-8906. x48-2
LARGE HOUSE wanted to rent a half mile from Chelsea High school. Needed by June. Ph. 981-1750. 51-9
CHARMING one-year-old girl is looking for playmates in the Chelsea area. Please call her mommy at 475-2437. x47-2
BABYSITTING WANTED for occasional day and/or evening hours. Ph. 475-2437. x47-2
STANDING HAY WANTED — Cash paid in advance. Ph. 517-764-0700, Monday through Friday, 8 a.m.-5 p.m. or write P. O. Box 249, Jackson, MI 49204. x46f

Wanted to Rent 10a
WANTED TO RENT Aug. 1st, 2- or 3-bedroom house, Chelsea. Write Jan Weber, 4955 New England Lane, Sylvania, O. 43560. Ph. 1-419-882-7983. x49-5
WANTED — Home to rent for family of four. 2 children in Chelsea schools. Ph. 475-3172. x46f

For Rent 11
FOR LEASE — Second floor new office space in Village of Dexter. Will partition to suit. Ph. 1-583-1356 or 1-852-8535. x42f
ROOMS, by day, week or month. Excellent for the single man or retiree. Sylvan Hotel, Chelsea. Ph. 475-2911. x31f
OFFICE SPACE available in downtown Dexter. For information call 426-4695. x48f
FOR RENT — Fair Service Center for meetings, parties, wedding receptions, etc. Weekdays or weekends. Contact John Wellnitz, phone 475-1518. x31f
AMERICAN LEGION HALL Rental — \$100-\$175. Ph. Lena Behnke, 475-9231, evenings and week-ends. x1f
CAR RENTAL by the day, week-end, week or month. Full insurance coverage, low rates. Call Lyle Christwell at Palmer Motor Sales. 475-1301. x25f
STORE FRONT BUILDING located on downtown Main St., Dexter. Prime location. Parking. 4,400 sq. ft. plus Ph. 426-4695. x18f
LAKEFRONT 3-BEDROOM HOUSE with fireplace, on chain of seven lakes. Nine miles north of Chelsea. Many extras. Ph. 485-2869. x33f
APARTMENT to non-smoking couple with no pets. Downstairs. South of Chelsea. Utilities furnished. Ph. 475-8334. x39f

45,000 SQ. FT. BUILDING FOR LEASE
May be used for retail store or offices. Paved parking available.
CONTACT
ED or VICKY
475-8141
x48-2

LOOKING FOR SOMEONE to share expenses of 2-bedroom mobile home on Portage Lake. Call (517)-783-5322. x48-2
CHELSEA ROD & GUN CLUB Hall Rental — For information contact Elwood Keezer, 475-8893, evenings and week-ends. x51

SECURE STORAGE SPACE FOR RENT
PRIVATE OR COMMERCIAL
Pay just for the space you use.
PH. 475-8892
x44f

ROOM FOR RENT for single woman. Large house, half garage, \$150. Utilities included. Ph. 426-2181. x47-2
40'x60' BUILDING. Available for snowmobile storage or whatever. Well lit and lock. Ph. 426-2716 after 1 p.m. x47-2
LAKE-FRONT — Lovely 3-bedroom brick duplex, balcony patio, appliances, carpeting. Rural setting off I-94, 15 minutes from Chelsea. References. Ph. 861-6554, evenings or week-ends. x47-2
ROOM in lake-front house for female (18-30). \$150 per month. Ph. 475-7494. x46f
LARGE APARTMENT to share near Chelsea Nature Center. Non-smoker preferred. Call persistently, 475-9436. x47f
HOUSE FOR RENT — 3-bedroom ranch in Waterloo on 2 acres. Full basement. Month to month basis. No lease. For information and rent 1-(313) 878-6298 after 6:30 p.m. x48-2
ROOM for rent with house privileges, on lake between Chelsea and Dexter. All utilities paid. Ph. 475-8418 evenings after 4 p.m. x48-2
2-BEDROOM country home between Manchester and Chelsea. References. Married couple preferred. Deposit. Ph. 1-313-971-5361. x47

Misc. Notice 12
4-H Teen Leader Association of Washtenaw County is offering their services — for yard work, cleaning and clowning for business promotion until July 1st. Phone Linda Bristol, 475-2266. x31-14
I WILL BE HAVING Stretch and Sew classes in my home starting May 6 in the evening. If interested please call Cindy, 475-7485. x47-2
ANYONE INTERESTED in store coupons and would like to swap on April 28 through May 4, please call Betty at 475-7156. Please call ahead of time. x47-2

Misc. Notice 12
4-H Teen Leader Association of Washtenaw County is offering their services — for yard work, cleaning and clowning for business promotion until July 1st. Phone Linda Bristol, 475-2266. x31-14
I WILL BE HAVING Stretch and Sew classes in my home starting May 6 in the evening. If interested please call Cindy, 475-7485. x47-2
ANYONE INTERESTED in store coupons and would like to swap on April 28 through May 4, please call Betty at 475-7156. Please call ahead of time. x47-2

Misc. Notice 12
4-H Teen Leader Association of Washtenaw County is offering their services — for yard work, cleaning and clowning for business promotion until July 1st. Phone Linda Bristol, 475-2266. x31-14
I WILL BE HAVING Stretch and Sew classes in my home starting May 6 in the evening. If interested please call Cindy, 475-7485. x47-2
ANYONE INTERESTED in store coupons and would like to swap on April 28 through May 4, please call Betty at 475-7156. Please call ahead of time. x47-2

Misc. Notice 12
4-H Teen Leader Association of Washtenaw County is offering their services — for yard work, cleaning and clowning for business promotion until July 1st. Phone Linda Bristol, 475-2266. x31-14
I WILL BE HAVING Stretch and Sew classes in my home starting May 6 in the evening. If interested please call Cindy, 475-7485. x47-2
ANYONE INTERESTED in store coupons and would like to swap on April 28 through May 4, please call Betty at 475-7156. Please call ahead of time. x47-2

Misc. Notice 12
4-H Teen Leader Association of Washtenaw County is offering their services — for yard work, cleaning and clowning for business promotion until July 1st. Phone Linda Bristol, 475-2266. x31-14
I WILL BE HAVING Stretch and Sew classes in my home starting May 6 in the evening. If interested please call Cindy, 475-7485. x47-2
ANYONE INTERESTED in store coupons and would like to swap on April 28 through May 4, please call Betty at 475-7156. Please call ahead of time. x47-2

Misc. Notice 12
4-H Teen Leader Association of Washtenaw County is offering their services — for yard work, cleaning and clowning for business promotion until July 1st. Phone Linda Bristol, 475-2266. x31-14
I WILL BE HAVING Stretch and Sew classes in my home starting May 6 in the evening. If interested please call Cindy, 475-7485. x47-2
ANYONE INTERESTED in store coupons and would like to swap on April 28 through May 4, please call Betty at 475-7156. Please call ahead of time. x47-2

Misc. Notice 12
4-H Teen Leader Association of Washtenaw County is offering their services — for yard work, cleaning and clowning for business promotion until July 1st. Phone Linda Bristol, 475-2266. x31-14
I WILL BE HAVING Stretch and Sew classes in my home starting May 6 in the evening. If interested please call Cindy, 475-7485. x47-2
ANYONE INTERESTED in store coupons and would like to swap on April 28 through May 4, please call Betty at 475-7156. Please call ahead of time. x47-2

Misc. Notice 12
4-H Teen Leader Association of Washtenaw County is offering their services — for yard work, cleaning and clowning for business promotion until July 1st. Phone Linda Bristol, 475-2266. x31-14
I WILL BE HAVING Stretch and Sew classes in my home starting May 6 in the evening. If interested please call Cindy, 475-7485. x47-2
ANYONE INTERESTED in store coupons and would like to swap on April 28 through May 4, please call Betty at 475-7156. Please call ahead of time. x47-2

Misc. Notice 12
4-H Teen Leader Association of Washtenaw County is offering their services — for yard work, cleaning and clowning for business promotion until July 1st. Phone Linda Bristol, 475-2266. x31-14
I WILL BE HAVING Stretch and Sew classes in my home starting May 6 in the evening. If interested please call Cindy, 475-7485. x47-2
ANYONE INTERESTED in store coupons and would like to swap on April 28 through May 4, please call Betty at 475-7156. Please call ahead of time. x47-2

Misc. Notice 12
4-H Teen Leader Association of Washtenaw County is offering their services — for yard work, cleaning and clowning for business promotion until July 1st. Phone Linda Bristol, 475-2266. x31-14
I WILL BE HAVING Stretch and Sew classes in my home starting May 6 in the evening. If interested please call Cindy, 475-7485. x47-2
ANYONE INTERESTED in store coupons and would like to swap on April 28 through May 4, please call Betty at 475-7156. Please call ahead of time. x47-2

Misc. Notice 12
4-H Teen Leader Association of Washtenaw County is offering their services — for yard work, cleaning and clowning for business promotion until July 1st. Phone Linda Bristol, 475-2266. x31-14
I WILL BE HAVING Stretch and Sew classes in my home starting May 6 in the evening. If interested please call Cindy, 475-7485. x47-2
ANYONE INTERESTED in store coupons and would like to swap on April 28 through May 4, please call Betty at 475-7156. Please call ahead of time. x47-2

Misc. Notice 12
4-H Teen Leader Association of Washtenaw County is offering their services — for yard work, cleaning and clowning for business promotion until July 1st. Phone Linda Bristol, 475-2266. x31-14
I WILL BE HAVING Stretch and Sew classes in my home starting May 6 in the evening. If interested please call Cindy, 475-7485. x47-2
ANYONE INTERESTED in store coupons and would like to swap on April 28 through May 4, please call Betty at 475-7156. Please call ahead of time. x47-2

Misc. Notice 12
4-H Teen Leader Association of Washtenaw County is offering their services — for yard work, cleaning and clowning for business promotion until July 1st. Phone Linda Bristol, 475-2266. x31-14
I WILL BE HAVING Stretch and Sew classes in my home starting May 6 in the evening. If interested please call Cindy, 475-7485. x47-2
ANYONE INTERESTED in store coupons and would like to swap on April 28 through May 4, please call Betty at 475-7156. Please call ahead of time. x47-2

Misc. Notice 12
4-H Teen Leader Association of Washtenaw County is offering their services — for yard work, cleaning and clowning for business promotion until July 1st. Phone Linda Bristol, 475-2266. x31-14
I WILL BE HAVING Stretch and Sew classes in my home starting May 6 in the evening. If interested please call Cindy, 475-7485. x47-2
ANYONE INTERESTED in store coupons and would like to swap on April 28 through May 4, please call Betty at 475-7156. Please call ahead of time. x47-2

Misc. Notice 12
4-H Teen Leader Association of Washtenaw County is offering their services — for yard work, cleaning and clowning for business promotion until July 1st. Phone Linda Bristol, 475-2266. x31-14
I WILL BE HAVING Stretch and Sew classes in my home starting May 6 in the evening. If interested please call Cindy, 475-7485. x47-2
ANYONE INTERESTED in store coupons and would like to swap on April 28 through May 4, please call Betty at 475-7156. Please call ahead of time. x47-2

Misc. Notice 12
4-H Teen Leader Association of Washtenaw County is offering their services — for yard work, cleaning and clowning for business promotion until July 1st. Phone Linda Bristol, 475-2266. x31-14
I WILL BE HAVING Stretch and Sew classes in my home starting May 6 in the evening. If interested please call Cindy, 475-7485. x47-2
ANYONE INTERESTED in store coupons and would like to swap on April 28 through May 4, please call Betty at 475-7156. Please call ahead of time. x47-2

Misc. Notice 12
4-H Teen Leader Association of Washtenaw County is offering their services — for yard work, cleaning and clowning for business promotion until July 1st. Phone Linda Bristol, 475-2266. x31-14
I WILL BE HAVING Stretch and Sew classes in my home starting May 6 in the evening. If interested please call Cindy, 475-7485. x47-2
ANYONE INTERESTED in store coupons and would like to swap on April 28 through May 4, please call Betty at 475-7156. Please call ahead of time. x47-2

Misc. Notice 12
4-H Teen Leader Association of Washtenaw County is offering their services — for yard work, cleaning and clowning for business promotion until July 1st. Phone Linda Bristol, 475-2266. x31-14
I WILL BE HAVING Stretch and Sew classes in my home starting May 6 in the evening. If interested please call Cindy, 475-7485. x47-2
ANYONE INTERESTED in store coupons and would like to swap on April 28 through May 4, please call Betty at 475-7156. Please call ahead of time. x47-2

Misc. Notice 12
4-H Teen Leader Association of Washtenaw County is offering their services — for yard work, cleaning and clowning for business promotion until July 1st. Phone Linda Bristol, 475-2266. x31-14
I WILL BE HAVING Stretch and Sew classes in my home starting May 6 in the evening. If interested please call Cindy, 475-7485. x47-2
ANYONE INTERESTED in store coupons and would like to swap on April 28 through May 4, please call Betty at 475-7156. Please call ahead of time. x47-2

Misc. Notice 12
4-H Teen Leader Association of Washtenaw County is offering their services — for yard work, cleaning and clowning for business promotion until July 1st. Phone Linda Bristol, 475-2266. x31-14
I WILL BE HAVING Stretch and Sew classes in my home starting May 6 in the evening. If interested please call Cindy, 475-7485. x47-2
ANYONE INTERESTED in store coupons and would like to swap on April 28 through May 4, please call Betty at 475-7156. Please call ahead of time. x47-2

Misc. Notice 12
4-H Teen Leader Association of Washtenaw County is offering their services — for yard work, cleaning and clowning for business promotion until July 1st. Phone Linda Bristol, 475-2266. x31-14
I WILL BE HAVING Stretch and Sew classes in my home starting May 6 in the evening. If interested please call Cindy, 475-7485. x47-2
ANYONE INTERESTED in store coupons and would like to swap on April 28 through May 4, please call Betty at 475-7156. Please call ahead of time. x47-2

Misc. Notice 12

TIME IS RUNNING SHORT — Better Homes and Gardens Crafts Creations will close its doors on May 15. Until then, you can share in fantastic discounts on all items. Let a counselor teach you a new craft and show you our line. Ph. 475-8054 after 5 p.m. x47
CHELSEA LIONESS CLUB Rummage and Bake Sale, at Longworth Plating, Chelsea, Fri., May 2, 10 to 4, Sat., May 3, 9 to 1. Proceeds to Special Olympics Track Meet. x47
MUSIC CITY WEEKEND with PARROTT'S TOURS
Featuring OPRYLAND ENTERTAINMENT PARK, GRAND OLE OPRY & NASHVILLE TOURS
May 15-16-17-18
(4 days & 3 nights)
Limited seats available
Call 475-8858 Evenings
x47

Knights of Columbus
Manchester, Mich.
ANNUAL
Roast Beef Dinner
K. of C. Hall,
next to Manchester Post Office
On Mothers Day,
May 11
Serving 12 to 3
family style
children \$2.25
adults \$4.50
pre-school free
x48-2

Hand-Carved Personalized wall plaques. Perfect gift for weddings, anniversaries, births and all occasions. 3 weeks advance notice. Call Mary, 475-2917. x50-4
Knights of Columbus
Manchester, Mich.
ANNUAL
Roast Beef Dinner
K. of C. Hall,
next to Manchester Post Office
On Mothers Day,
May 11
Serving 12 to 3
family style
children \$2.25
adults \$4.50
pre-school free
x48-2

Knights of Columbus
Manchester, Mich.
ANNUAL
Roast Beef Dinner
K. of C. Hall,
next to Manchester Post Office
On Mothers Day,
May 11
Serving 12 to 3
family style
children \$2.25
adults \$4.50
pre-school free
x48-2

Knights of Columbus
Manchester, Mich.
ANNUAL
Roast Beef Dinner
K. of C. Hall,
next to Manchester Post Office
On Mothers Day,
May 11
Serving 12 to 3
family style
children \$2.25
adults \$4.50
pre-school free
x48-2

Knights of Columbus
Manchester, Mich.
ANNUAL
Roast Beef Dinner
K. of C. Hall,
next to Manchester Post Office
On Mothers Day,
May 11
Serving 12 to 3
family style
children \$2.25
adults \$4.50
pre-school free
x48-2

Knights of Columbus
Manchester, Mich.
ANNUAL
Roast Beef Dinner
K. of C. Hall,
next to Manchester Post Office
On Mothers Day,
May 11
Serving 12 to 3
family style
children \$2.25
adults \$4.50
pre-school free
x48-2

Knights of Columbus
Manchester, Mich.
ANNUAL
Roast Beef Dinner
K. of C. Hall,
next to Manchester Post Office
On Mothers Day,
May 11
Serving 12 to 3
family style
children \$2.25
adults \$4.50
pre-school free
x48-2

Knights of Columbus
Manchester, Mich.
ANNUAL
Roast Beef Dinner
K. of C. Hall,
next to Manchester Post Office
On Mothers Day,
May 11
Serving 12 to 3
family style
children \$2.25
adults \$4.50
pre-school free
x48-2

Knights of Columbus
Manchester, Mich.
ANNUAL
Roast Beef Dinner
K. of C. Hall,
next to Manchester Post Office
On Mothers Day,
May 11
Serving 12 to 3
family style
children \$2.25
adults \$4.50
pre-school free
x48-2

Knights of Columbus
Manchester, Mich.
ANNUAL
Roast Beef Dinner
K. of C. Hall,
next to Manchester Post Office
On Mothers Day,
May 11
Serving 12 to 3
family style
children \$2.25
adults \$4.50
pre-school free
x48-2

Knights of Columbus
Manchester, Mich.
ANNUAL
Roast Beef Dinner
K. of C. Hall,
next to Manchester Post Office
On Mothers Day,
May 11
Serving 12 to 3
family style
children \$2.25
adults \$4.50
pre-school free
x48-2

Knights of Columbus
Manchester, Mich.
ANNUAL
Roast Beef Dinner
K. of C. Hall,
next to Manchester Post Office
On Mothers Day,
May 11
Serving 12 to 3
family style
children \$2.25
adults \$4.50
pre-school free
x48-2

Knights of Columbus
Manchester, Mich.
ANNUAL
Roast Beef Dinner
K. of C. Hall,
next to Manchester Post Office
On Mothers Day,
May 11
Serving 12 to 3
family style
children \$2.25
adults \$4.50
pre-school free
x48-2

Knights of Columbus
Manchester, Mich.
ANNUAL
Roast Beef Dinner
K. of C. Hall,
next to Manchester Post Office
On Mothers Day,
May 11
Serving 12 to 3
family style
children \$2.25
adults \$4.50
pre-school free
x48-2

Knights of Columbus
Manchester, Mich.
ANNUAL
Roast Beef Dinner
K. of C. Hall,
next to Manchester Post Office
On Mothers Day,
May 11
Serving 12 to 3
family style
children \$2.25
adults \$4.50
pre-school free
x48-2

Knights of Columbus
Manchester, Mich.
ANNUAL
Roast Beef Dinner
K. of C. Hall,
next to Manchester Post Office
On Mothers Day,
May 11
Serving 12 to 3
family style
children \$2.25
adults \$4.50
pre-school free
x48-2

Knights of Columbus
Manchester, Mich.
ANNUAL
Roast Beef Dinner
K. of C. Hall,
next to Manchester Post Office
On Mothers Day,
May 11
Serving 12 to 3
family style
children \$2.25
adults \$4.50
pre-school free
x48-2

Knights of Columbus
Manchester, Mich.
ANNUAL
Roast Beef Dinner
K. of C. Hall,
next to Manchester Post Office
On Mothers Day,
May 11
Serving 12 to 3
family style
children \$2.25
adults \$4.50
pre-school free
x48-2

Knights of Columbus
Manchester, Mich.
ANNUAL
Roast Beef Dinner
K. of C. Hall,
next to Manchester Post Office
On Mothers Day,
May 11
Serving 12 to 3
family style
children \$2.25
adults \$4.50
pre-school free
x48-2

Knights of Columbus
Manchester, Mich.
ANNUAL
Roast Beef Dinner
K. of C. Hall,
next to Manchester Post Office
On Mothers Day,
May 11
Serving 12 to 3
family style
children \$2.25
adults \$4.50
pre-school free
x48-2

Knights of Columbus
Manchester, Mich.
ANNUAL
Roast Beef Dinner
K. of C. Hall,
next to Manchester Post Office
On Mothers Day,
May 11
Serving 12 to 3
family style
children \$2.25
adults \$4.50
pre-school free
x48-2

Knights of Columbus
Manchester, Mich.
ANNUAL
Roast Beef Dinner
K. of C. Hall,
next to Manchester Post Office
On Mothers Day,
May 11
Serving 12 to 3
family style
children \$2.25
adults \$4.50
pre-school free
x48-2

Knights of Columbus
Manchester, Mich.
ANNUAL
Roast Beef Dinner
K. of C. Hall,
next to Manchester Post Office
On Mothers Day,
May 11
Serving 12 to 3
family style
children \$2.25
adults \$4.50
pre-school free
x48-2

Knights of Columbus
Manchester, Mich.
ANNUAL
Roast Beef Dinner
K. of C. Hall,
next to Manchester Post Office
On Mothers Day,
May 11
Serving 12 to 3
family style
children \$2.25
adults \$4.50
pre-school free
x48-2

Knights of Columbus
Manchester, Mich.
ANNUAL
Roast Beef Dinner
K. of C. Hall,
next to Manchester Post Office
On Mothers Day,
May 11
Serving 12 to 3
family style
children \$2.25
adults \$4.50
pre-school free
x48-2

Knights of Columbus
Manchester, Mich.
ANNUAL
Roast Beef Dinner
K. of C. Hall,
next to Manchester Post Office
On Mothers Day,
May 11
Serving 12 to 3
family style
children \$2.25
adults \$4.50
pre-school free
x48-2

Knights of Columbus
Manchester, Mich.
ANNUAL
Roast Beef Dinner
K. of C. Hall,
next to Manchester Post Office
On Mothers Day,
May 11
Serving 12 to 3
family style
children \$2.25
adults \$4.50
pre-school free
x48-2

Bus. Services 13

JIM W. FRENCH
Small Dump Trucking
SAND - GRAVEL - STONE
Ph. Chelsea 475-1173
21f
CORRECTIVE HORSESHOEING and trimming. Mike Brisbois. Ph. 565-3036. x45f
LIGHT HAULING — Call 426-8214 days, 426-3080 evenings. Ask for James. x47-4

Norval R. Menge
Builder
CUSTOM BUILT HOMES
ADDITIONS
REMODELING
GARAGES AND POLE BARN
We also do —
LIGHT HAULING
BACKHOE WORK
GENERAL REPAIRS
all our work fully guaranteed
CALL FOR FREE ESTIMATES
475-1005
x44f

JOSE CABRERA, JR.
LICENSED BUILDER
Additions, New Construction
Remodeling, Kitchens,
Concrete Forming,
Poured Walls, Footings,
Decks and Finished Slabs
FREE ESTIMATES

Bus. Services 13

LITTLE WACK EXCAVATING
Basement — Drainfields
Buildings — Digging
Snow Removal — Tree Removal
LICENSED AND INSURED

Paul Wackenhut
Ph. 428-8025

PIANO TUNING and repair. Quali-
fied technician. Call Ron Harris,
475-7134.

R. L. BAUER Builders
LICENSED AND INSURED
Custom Building
Houses — Garages
Pole Barns
Roofing — Siding
Concrete Work
FREE ESTIMATES
Call 475-1218

Why hire THREE
contractors
when ONE will do?
HILLTOP, INC.

PLUMBING
HEATING
ELECTRICAL

WE DO IT ALL!
Serving Washtenaw County
for the 25th year.
475-2949
8316 Werkner - Chelsea

J. R. CARRUTHERS
LICENSED
RESIDENTIAL BUILDER
CUSTOM HOMES
ADDITIONS/FIREPLACES
PATIOS
ROOFING/SIDING/REPAIRS
475-7234
CHELSEA

Financial 14

PRIVATE PARTY. Purchasers land con-
tracts and mortgages. Eves. only
475-1469.

Card of Thanks 16

THANK YOU
I would like to thank all my
friends and relatives for the
beautiful plants, flowers, cards
and many visits and phone calls I
received during my stay at St.
Joseph Mercy Hospital and since
my return home. It is nice to
know there are so many wonder-
ful, thoughtful people still
around. Thank you one and all.
Peggy Salyer.

CARD OF THANKS
We would like to express our
heart-felt thanks to our friends,
neighbors and relatives for the
many kindnesses, visits, calls,
flowers and cards which we
received during the illness and
death of our brother and uncle,
Edward Schiller. We are truly
grateful.
Norma Schiller.
Margaret Warren.
Lucille Martin.

Legal Notices 18

STATE OF MICHIGAN
In the Circuit Court for the County of
Washtenaw
JAN LEENDERT DE VRIES, Plaintiff,
vs.
ANNA CATHARINE DE VRIES-VISSER,
Defendant.
File No. 80-25473 DO
ORDER TO ANSWER
On the 29th day of March, 1980 an action
was filed by Jan Leendert de Vries, Plaintiff
against Anna Catharine de Vries-Visser,
Defendant in this Court to obtain a Judgment
of Divorce.
IT IS HEREBY ORDERED that the
Defendant ANNA CATHARINE DE VRIES-
VISSER, shall answer or take such other ac-
tion as may be permitted by law on or before
the 16th day of May, 1980. Failure to comply
with this Order will result in a judgment by
default against such Defendant for the relief
demanded in the Complaint filed in this
Court.
Date of order: April 14, 1980
HENRY T. CONLIN, Circuit Judge.
A true copy.
Arthur E. Carpenter (P 11635)
Attorney for Plaintiff
415 Detroit Street
Ann Arbor, Michigan 48104
Telephone: 313/761-7882
Apr 17-24, May 1-8

Card of Thanks 16

THANK YOU
The Chelsea Athletic Boosters
Club wishes to express sincere
appreciation to all area mer-
chants who were so generous in
making contributions to the
Millionaire's Party.
This party and many other
projects in the past have been
successful because of the support
through donations and hard work
of so many in our community.
Our special thanks to:
Andy's Service
Ann Arbor Trust Co.
ASCO
Big Boy
Boron Oil
Bucky's Barber Shop
Chelsea Hardware
Chelsea Lanes
Chelsea Lumber
Chelsea Pharmacy
Country Craftique
Cushing-Malloy
Dancer's
Dayspring Gifts
Faist-Sprague
Foxy Lady
Gambles
Garrett's
Glenn's Service
Grove Store
Heydlauff's
Honnegger's & Co.
Inverness Inn
Jiffy Market
Jim Dault Builders
Jim & Son Taxidermy
Karen's Boutique
Klink Excavating
Kusterer's Market
Log Cabin Lunch
McDonald's
Merkel's
Norm's Body Shop
North Lake Sales
Oscar Hansen
Parts Peddler
Pittsburgh Paint
Rampy Chevrolet
Ricardo's
Rosentreter Excavating
Schleede's
Schneider's Grocery
Strieter's Men's Wear
Timothy's Catering
Village Bakery
Vogel's & Foster's
Walt's Barber Shop
Winans Jewelry
Whiffle Tree
Woodshed Eatery

Legal Notices 18

MORTGAGE SALE — Default having
been made in the terms and conditions of a
certain mortgage made by Curtis L. Holt, a
married man, of Ypsilanti, Washtenaw
County, Michigan, Mortgagee to STAN-
DARD FEDERAL SAVINGS AND LOAN
ASSOCIATION, A Federal Association, of
Troy, Oakland County, Michigan, Mortgagee
dated the 25th day of October, 1978, and
recorded in the office of the Register of
Deeds, for the County Washtenaw and State
of Michigan, on the 6th day of November,
1978, in Liber 1681 of Washtenaw County
Records, on Page 256, on which mortgage
there is claimed to be due, at the date of this
notice, for principal and interest, the sum of
Twenty Three Thousand Seven Hundred
Thirty-Two and 61/100 Dollars (\$23,732.61);
And no suit or proceeding at law or in
equity having been instituted to recover the
debt secured by said mortgage or any part
thereof, Now, therefore, by virtue of the
power of sale contained in said mortgage,
and pursuant to the statute of the State of
Michigan in such case made and provided,
notice is hereby given that on Thursday the
15th day of May, 1980, at 10:00 o'clock A.M.
Local Time, said mortgage will be foreclosed
by a sale at public auction, to the highest
bidder at the West entrance to the
Washtenaw County Building in the City of
Ann Arbor, Washtenaw County, Michigan
(that being the building where the Circuit
Court for the County of Washtenaw is held),
of the premises described in said mortgage,
or so much thereof as may be necessary to
pay the amount due, as aforesaid, on said
mortgage, with the interest thereon at Nine
and three quarters percent (9-3/4%) per an-
num and all legal costs, charges and ex-
penses, including the attorney fees allowed
by law, and also any sum or sums which may
be paid by the undersigned, necessary to
protect its interest in the premises. Which
said premises are described as follows:
All that certain piece or parcel of land
situate in the Township of Ypsilanti in the
County of Washtenaw and State of Michigan,
and described as follows:
Lot Seven Hundred Seventy-Nine (779),
West Willow Unit No. 10, as recorded in
Liber 14 of Plats, Pages 46 and 47,
Washtenaw County Records.
During the six months immediately follow-
ing the sale, the property may be redeemed.
Dated at Troy, Michigan, March 19, 1980.
STANDARD FEDERAL SAVINGS
AND LOAN ASSOCIATION
A Federal Association
Mortgagee
DYKEMA, COSETT, SPENCER,
GOODNOW & TRIGG
Attorneys for Mortgagee
2401 West Big Beaver Rd.
Troy, Michigan 48064
April 3-10-17-24-May 1

Lawyer Lincoln

Abraham Lincoln left New
Salem, Ill., on April 15, 1837 and
moved to Springfield where he
went into a law partnership with
John Stuart. Two years later, as a
circuit riding lawyer, Lincoln
began making stops at the
Postville Courthouse in Logan
county, Ill. The courthouse is now
one of the many historic struc-
tures which make up Greenfield
Village in Dearborn, after being
moved there by Henry Ford in
1929.

Rent The Rug Doctor.
The original
"steam" carpet
cleaner with
the Vibrat-
ing Brush.
Cleans
upholstery too!



GAMBLES
110 N. Main St., Chelsea
Phone 475-7472

**ORDINANCE NO. 86A
Amendment to
Ordinance No. 86**

The Village of Chelsea Ordains:
AN ORDINANCE AMENDING
ORDINANCE NO. 86, THE OR-
DINANCE TO ESTABLISH A
COMMUNITY ANTENNA
TELEVISION SYSTEM AND TO
AWARD FRANCHISES FOR
THE ESTABLISHMENT AND
OPERATION THEREOF.
SECTION 1. Section 5 (c) of Or-
dinance No. 86 be and the same is
hereby amended by its deletion
and substitution in its place and
stead of the following provision:
“(c) No franchise shall be
transferred, unless the
holder shall first offer the
system, lines, equipment
and customer lists to the
Village for purchase for
ninety (90) days upon such
terms, price and conditions
as the holder desires to sell.
If the Village shall tender
to the holder during said
ninety (90) days the price
on the terms and conditions
set forth in the notice of
offer, the holder shall sell
and convey said assets ac-
cording to the notice of
offer. If the Village shall
fail to exercise its option,
then the holder can sell free
of this provision but not for
any lesser price or better
terms and conditions than
those offered to the Village.
Provided, however, that if
the Village shall terminate
the franchise under the
provisions of Section 3 of
this Ordinance, then the
Village's rights under the
within subsection shall be
null and void and the holder
may dispose of its assets
free and clear of the terms
of this Ordinance.”
SECTION 2. The remainder of
said Ordinance No. 86, be and the
same is hereby ratified and reaf-
firmed.
SECTION 3. The within amend-
ment shall be effective thirty (30)
days after adoption and publica-
tion.
Dated: April 15, 1980
Charles S. Ritter,
President.
Frederick A. Weber,
Deputy Clerk.

**RESOLUTION ADOPTING
AMENDMENT
TO ORDINANCE NO. 86**

BE IT RESOLVED, and it is
hereby resolved, that the Village
Council of the Village of Chelsea
does hereby adopt, approve and
promulgate the Amendment to
Ordinance No. 86, a copy of which
is attached hereto, and the Clerk
of said Village be and he is
hereby directed to cause the
same to be published in The
Chelsea Standard, in the Village
of Chelsea, or any other paper of
general circulation, and other-
wise record said instrument
within the Book of Ordinances.
Resolution adopted by the
following roll call vote: Ayes, 6;
Nays, 0.
STATE OF MICHIGAN)
COUNTY OF WASHTENAW)ss
I, Thomas J. Neumeyer, Clerk
of the Village of Chelsea, do
hereby declare under penalties of
perjury that the foregoing resolu-
tion and amendment was duly
adopted by the Village Council of
the Village of Chelsea on the 15th
day of April, 1980, by the above
stated roll call vote.
Dated: April 15, 1980.
Frederick A. Weber,
Deputy Clerk.

The U. S. Employment Service
directs the federal-state employ-
ment service system, a nation-
wide network of some 2,400 local
offices staffed by about 35,000
state employees; the state
employment services make some
6 million job placements each
year, offer a variety of employer
services, and provide other ser-
vices to applicants, including
counseling, testing and referral
to training.

NOTICE
Residential customers refuse charge will be in-
creased from \$2.00 to \$3.00 a month, effective with
the May utility billing.

VILLAGE OF CHELSEA
Frederick Weber, Administrator

PUBLIC HEARING
A public hearing will be held in the Village
Council Chambers, Tuesday, May 6, 1980, beginning
at 7:30 p.m. to consider the 1980 Village Budget.
A copy of the budget is available for public
inspection in the Office of the Village Administra-
tor, 104 E. Middle Street, Chelsea.

VILLAGE OF CHELSEA
Thomas Neumeyer, Clerk

**Chelsea Students Exceed
State Average in All Tests**

Chelsea School District
students exceeded the state
average in every category in
state-wide reading and
mathematics tests, given last fall
to some 419,000 Michigan fourth,
seventh and tenth graders,
Superintendent Ray Van Meer
told the Chelsea School Board
this week.
Moreover, in comparison with
the ten other Washtenaw county
school districts, Chelsea ranks
very near the top in reading and
mathematics proficiency in all
three grades, Van Meer said.
According to figures submitted
by Susan Carter, district testing
co-ordinator, Chelsea ranked
first or second in the county in
fourth-grade math and reading,
seventh-grade reading and tenth-
grade math and reading. Only in
seventh-grade math, in which
Chelsea tied for fourth with
Milan, did the school fall from
first or second among the ten
districts.
Districts in the county are Ann
Arbor, Dexter, Whitmore Lake,
Manchester, Willow Run,
Chelsea, Milan, Saline, Ypsilanti
and Lincoln.
Chelsea also comes out very
well in computations of the
average level of attainment
within the county. These figures
measure the total percent of
students who achieved each ob-
jective in the math and reading
tests to at least the average
achievement level in the county.

Chelsea placed first in this
percentage in tenth grade
reading with a 81.64 percent of
students meeting the average
achievement level. Local
students were second in the coun-
ty in fourth grade math (92.74
percent) and reading (85.40 per-
cent); seventh-grade reading
(86.50 percent); and tenth-grade
reading (83.30 percent).

Only in seventh-grade math did
Chelsea fall lower than second,
with 74.40 percent scoring at least
average, for fourth place in the
county.
As far as state-wide averages
are concerned, scores
demonstrate that even though
state averages are higher this
year than those of 1978-79,
Chelsea School District students
still maintain higher scores.

**CUSTOM
BUMPING and PAINTING**
FREE ESTIMATES - ALL MAKES
Get the Best for Less!
FRANK GROHS CHEVROLET
Phone 426-4677 Dexter, Mich.

**CATS
CHELSEA AREA
TRANSPORTATION SYSTEM**
Transportation for the Senior Citizens,
65 years & Older, & the Handicapped.
Advance reservations are required. For morning
transportation call the preceding afternoon between
1 p.m. and 3 p.m. For afternoon transportation call
in the morning from 9 a.m. to 11 a.m.
CALL 475-9494
between 9 to 11 a.m. or 1 to 3 p.m.
Service hours are 9 a.m. to 4:30 p.m. daily;
Thursdays, 9 a.m. to 1 p.m.

**OFFICIAL NOTICE
REGULAR MEETING OF THE
DEXTER TOWNSHIP BOARD**
will be held
Tuesday, May 6, 1980 - 7:30 p.m.
at the
Dexter Township Hall, 6880 Dexter-Pinckney Rd.
ITEMS TO BE DISCUSSED:
1.) Approval of the final plat of Seven Oaks Sub-
division.
2.) Land rezoning request of Paul Peltes to rezone
62.3 acres on Island Lake Rd. near Dexter
Town Hall Rd., from Ag. to Rr.
3.) Contributions to the Chelsea and Dexter rec-
reation programs.
4.) County Road Commission contract.
WILLIAM EISENBEISER
Dexter Township Clerk

**LAST DAY OF
REGISTRATION
SCHOOL
ELECTION**
Notice of Last Day of Registration of the Electors of
CHELSEA SCHOOL DISTRICT
Washtenaw and Jackson Counties, Michigan


**TO THE ELECTORS OF THE
SCHOOL DISTRICT:**
Please Take Notice that the Annual School
Election of the School District will be held on
MONDAY, JUNE 9, 1980

The last day on which persons may register
with the appropriate City or Township Clerks,
in order to be eligible to vote at the Annual School
Election called to be held on Monday, June 9, 1980,
is

MONDAY, MAY 12, 1980
Persons registering after 5:00 o'clock, p.m., on
Monday, May 12, 1980, are not eligible to vote at
the Annual School Election.

Persons planning to register with the respective
city or township clerks must ascertain the days and
hours on which the clerks' offices are open for regis-
tration.
This Notice is given by order of the Board of
Education.
ROBERT N. SCHAFER
Secretary, Board of Education

**REAL ESTATE &
PERSONAL PROPERTY
AUCTION**
**3-BEDROOM HOME
ANTIQUES - HOUSEHOLD**
We will sell the following described real estate & per-
sonal property at public auction at 222 Park Street,
Chelsea, Michigan. Located 2 blocks east of Main Street.
SATURDAY, MAY 3
Commencing at 11:00 a.m.



2-STORY FRAME HOUSE—2-CAR GARAGE
Ideal Downtown Location.
2 blocks from Beach Middle School,
4 Blocks from High School.

TERMS: \$5,000.00 due sale date as deposit. Balance in
full at closing on or before 45 days from sale date. Title
insurance and warranty deed furnished by seller. Sale
subject to Probate Court approval.

PRE-SALE REAL ESTATE INSPECTION—Monday, April 21st
at 3:00 p.m.—7:00 p.m. or by appointment with auc-
tioneers or call anytime for information.

PERSONAL PROPERTY—Antique oak slant front desk,
older walnut dining room table w/6 matching chairs &
buffet, antique iron clothes dryer, Crosby cabinet radio,
floor lamp, wicker rocker, radio cabinet, end table,
library table, beautiful oak dresser w/bevel glass mir-
ror, cedar chest w/copper trim, iron bed, older bed
w/Queen Anne feet, chest of drawers, double bed, old
trunk, vanity, cane bottom chair, silver coffee server
w/creamer, sugar & tray, Rogers Brothers flatware, lace
table cloth, oak swivel chair, General Electric
refrigerator w/top freezer, Kirby upright sweeper,
miscellaneous pots, pans & dishes, copper wash tub, kit-
chen chairs, baskets, large crocks, sewing box, ham-
mers, saws, miscellaneous hand tools, crate, garden
tools, large vise, wood extension ladder, log chain.

MANY MORE ITEMS NOT LISTED!

**Estate of
Mrs. David Blanche Mohrlock**
Braun & Helmer Auction Services
Lloyd R. Braun, Ann Arbor, 665-9646 Jerry L. Helmer, Saline, 994-6309

Why take a chance?

If income per acre is important to you, you shouldn't plant anything other than the brand that has consistently proven itself superior... Pioneer® brand seed corn. Pioneer hybrids have the track record... they are the proven winners, in yield, in low-moisture at harvest, in income per acre. Call me now to reserve the proven, dependable Pioneer brand hybrids you'll want for next year.



KEITH BRADBURY

Ph. 475-8316
10065 EASTON RD.
DEXTER, MICH.



PIONEER
BRAND SEEDS

*Registered trademark of Pioneer Hi-Bred International, Inc., Des Moines, Iowa, U.S.A.

Levi's

DENIM JEANS

- BIG BELLS \$16.00
- REG. BELLS \$16.00
- BOOT LEGS \$16.00
- CORDUROYS, in 4 colors \$16.00

HOPSACK SLACKS

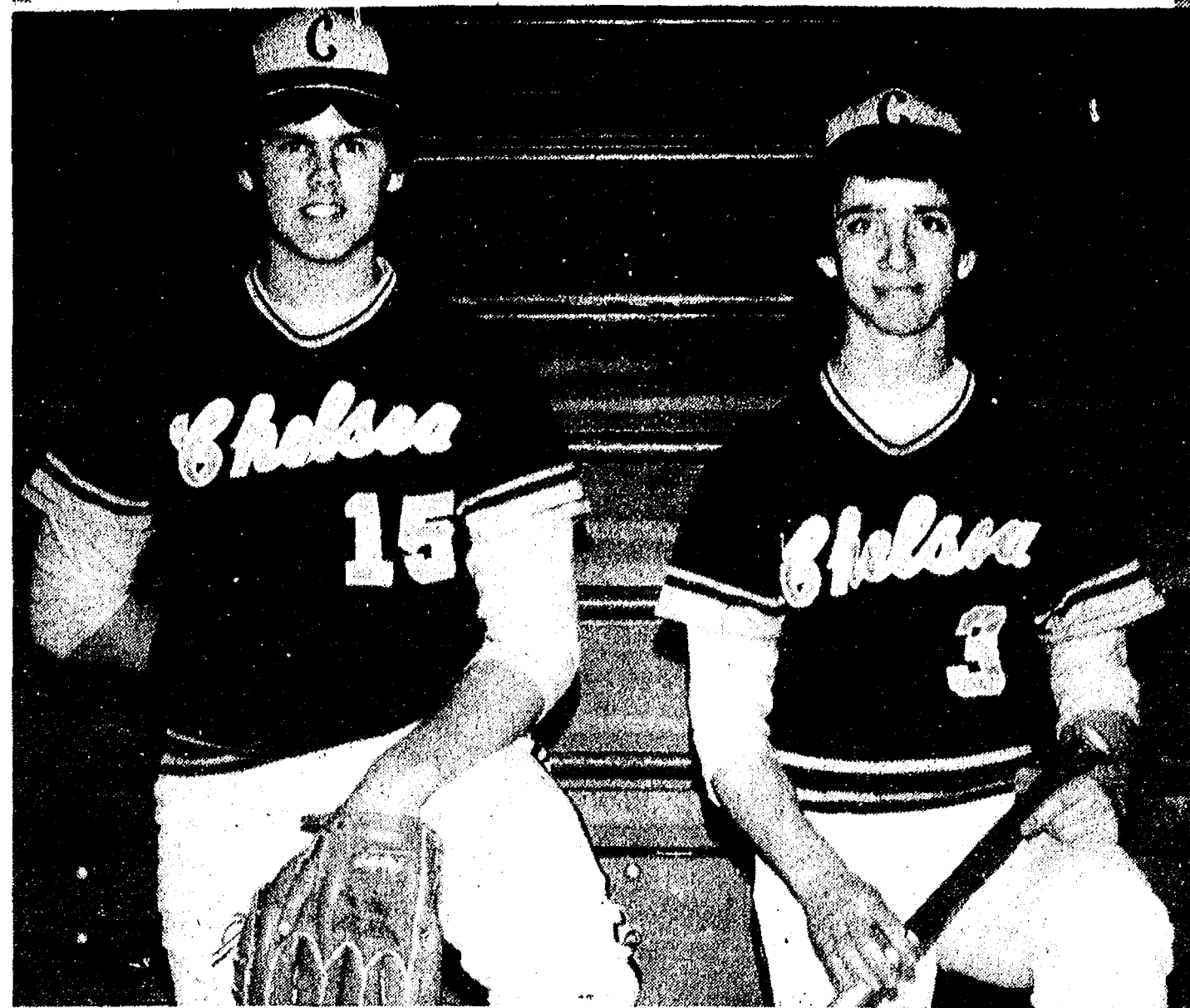
- BEIGE, TAN & WHITE .. \$16.00-\$19.00
- KHAKI SLACKS \$19.00
- LIGHT BLUE CORDS \$19.00

Store Hours: Mon. thru Sat., 8 a.m. to 5:30 p.m.

STRIETER'S MEN'S WEAR

Since 1914

Sluggers of the Week



LOU JAHNKE (15) and DREW SPRAGUE (3) are this week's featured varsity sluggers. Jahnke, a senior outfielder, drove in Chelsea's single run against Dexter last Friday, bringing home Jeff Dils from third. He is a veteran of the varsity and also contributed to the Chelsea varsity football team. Drew Sprague, an infielder and

senior, is playing his second year on varsity. He is a trumpet player with the Chelsea High school marching and symphony bands and chosen for the McDonald's All-America High School Band last year. High point of the season for Sprague was the Brighton contest, in which he doubled to drive in Chelsea's only run.

JV Baseball Squad Wins 3 Out of 4

Chelsea's junior varsity baseball squad continued to meet with success this week, taking three out of four contests.

Chelsea beat Dexter Friday in extra innings, 3-2, split a doubleheader Saturday with Willow Run, 10-6 and 16-2, and drubbed Lincoln Tuesday, 10-2.

The Dexter contest matched up two good pitchers in Steve Grau for Chelsea and Dexter's Hosmer. Grau yielded only two hits and struck out 15 batters for the Bulldogs.

Chelsea got five hits from Ross Murphy, with two, and Steve Grau, Gary Van Meer and Mike Bareis. Key factors for the Bulldogs were excellent defense and Grau's hurling.

Saturday, the JV dropped their first contest of a twin bill to

Willow Run, 10-6, before rallying to take the second contest, 16-2.

In the first game, Chelsea pitchers walked 11 batters, the defense committed six errors and Willow Run slammed eight hits to account for the margin of defeat.

Getting hits for the Bulldogs were Ross Murphy, Mike Bareis, Gary Van Meer, John Welton and Tim Whitesall. Hurling for Chelsea were Mike Bareis and Bob Trevino.

In the second contest it was Chelsea's turn to benefit from bases on balls. The Bulldogs received 13 walks to go with six hits, putting the game out of reach of the Flyers.

Booming hits for Chelsea were Murphy, who also had five stolen bases, Grau, Van Meer, Welton, Sam Coomes and Doug Henson.

Throwing for Chelsea were John Welton and Gary Van Meer.

Tuesday, the JV defeated the Lincoln JV by a 10-2 margin.

The Bulldogs took the game in the fifth inning when they scored seven runs on four walks and three hits. Whitesall and Bareis doubled and Craig Olmstead singled.

Also contributing hits were Murphy, Henson, Coomes and Van Meer.

John Welton threw a two-hitter and struck out 10 for the JV.

Chelsea's record is now 6-2 over-all and 2-0 in the SEC.

9th Grade Band Rated Excellent At State Festival

Musicians of the Chelsea High school 9th grade band earned an over-all excellent rating of II at the State Festival last Saturday at Walled Lake.

Band Director Steve Bergmann said the group received two IIs and a I in concert and a I in sight reading, which averaged out to a II.

Ratings are given on a scale of I (superior) down to V.

The band performed "Amperita Roca" by Texidor, "Pageantry Overture" by Edmondson and "Landmark Overture" by Kauhili.

4 Cassidy Lake Escapees Nabbed In Kalamazoo

Four of five inmates of Cassidy Lake Technical School who walked away from that institution on Monday were apprehended in Kalamazoo a day later.

Still at large is Steven D. McCoy, 21, serving time at Cassidy Lake for auto theft. A spokeswoman at the correctional institution said that McCoy has called Cassidy Lake several times, but has refused to tell authorities where he is.

McCoy is believed to be in the Kalamazoo area, where the other four men were taken into custody by Kalamazoo Police.

Advertising revenue pays for costs of producing The Standard. Let the merchant know you appreciate it.

We build special storage buildings.

Cuckler pre-engineered all-steel buildings for storage on the farm, business and industry. Wide variety of types and sizes. Let us help you plan and build for your present and future needs.

Cuckler
AUTHORIZED BUILDER

DICK POLJAN
13875 MCKINLEY
CHELSEA, MICH.
Ph. 475-2921

JV Baseball

- April 29—Milan (A) ... 4:30 p.m.
- May 2—Saline (H) ... 4:30 p.m.
- May 3—Pnckny (DH-H) ... 11 a.m.
- May 6—JC West (H) ... 4:30 p.m.
- May 9—Lincoln (H) ... 4:30 p.m.
- May 13—Dexter (A) ... 4:30 p.m.
- May 15—C Central (H) ... 4:30 p.m.
- May 16—Milan (H) ... 4:30 p.m.
- May 20—Saline (A) ... 4 p.m.
- May 22—JC West (A) ... 4 p.m.

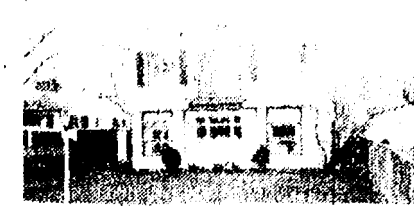
Coach: Ken Larsen

JV Softball

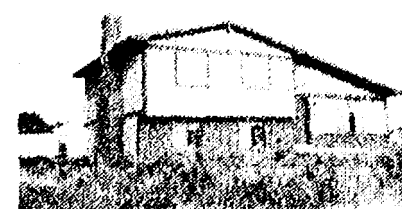
- May 2—Saline (A) ... 4 p.m.
- May 3—Brighton (DH-A) 11 a.m.
- May 6—Western (A) ... 4 p.m.
- May 9—Lincoln (A) ... 4 p.m.
- May 10—Huron (DH-H) ... 11 a.m.
- May 13—Dexter (H) ... 4:30 p.m.
- May 15—C Central (H) ... 4:30 p.m.
- May 16—Milan (A) ... 4:30 p.m.
- May 17—Pioneer (DH-H) 11 a.m.
- May 20—Saline (H) ... 4:30 p.m.
- May 22—Western (H) ... 4:30 p.m.

Coach: Charles Waller

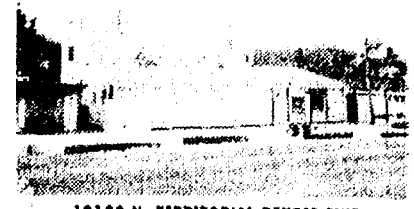
We'll give our word to you.



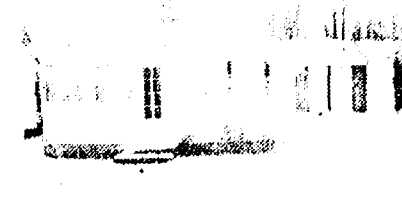
14060 EDGEWATER DEXTER TWP.
Totally rebuilt and expanded in 1977. Great 3 bedroom home with 2 fireplaces. Lakefront lot on beautiful Hall Moon Lake. (4U20007)
LAND CONTRACT \$89,700.00



9025 BERRICE ACCESS TO RUSH LAKE
1 year old home in Hamburg Township. 3 bedrooms, nice corner lot. (4U20010)
LAND CONTRACT \$66,500.00



10180 N. TERRITORIAL DEXTER TWP.
Party store - some successful owners over 12 years. living quarters attached. Beer and wine take out. Superior location. (4U20009)
LAND CONTRACT \$129,900.00



584 PLEASANT LK ON PATTERSON LAKE
2 bedroom home with dock on chain of Seven Lakes. Ideal for starter home. (4U20010)
LAND CONTRACT \$42,900.00

Century 21

Jordan Real Estate
Dexter, Mich. 426-3988



SALES PERSON MARK ENGEL 475-8720

KLINGE'S German Haus

in STOCKBRIDGE
EVERY SUNDAY

11 a.m. to 5 p.m.

**SALAD BAR
HOT BUFFET**
WITH A GREAT SELECTION

All you can eat

\$4.99

Children under 10, \$2.99

TUESDAY THRU THURSDAY OPEN 11 a.m. to 7:30
FRIDAY AND SATURDAY OPEN 11 a.m. to 9:00

Freeze rising food prices with an Amana freezer

Amana. Energy Saving Freezers
13 to 17 CUBIC FEET

Manual defrost models in 13, 15 and 17 cu. ft.

- Amana-matic contact freezing — with coils on the bottom of each shelf and at top of liner. So all foods are either on or directly below a prime freezing surface.

Free-O'-Frost models in 14 and 16 cu. ft.

- Each shelf forms its own fast freeze compartment.
- 16 cu. ft. size takes the Amana automatic ice maker (optional at extra cost).



Amana wants your family to remain among the best fed families of the world. And with an Amana freezer, you can.

- By purchasing beef by the quarter or half, you can store a plentiful supply at a fixed price.
- By freezing your home grown fruits and vegetables, you can save on food costs.
- By taking advantage of supermarket specials on fish, meat, poultry and more, you can get more value out of every food dollar.

Deepfreeze
FOOD FREEZER

Made Only By

Amana
7 to 28 CU. FT.

Fast zero-degree storage

- Freezing coils on all 4 sides and the bottom make the entire food liner a fast freeze compartment.

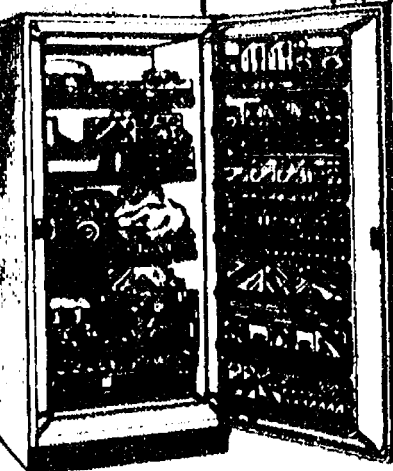
Most models also feature:

- Removable basket and divider
- Light in lid
- Defrost drain
- Power signal light

Large capacity Amana. Upright Freezers
22 or 23 CUBIC FEET

23 cu. ft. manual defrost with Amana-matic contact freezing.

22 cu. ft. Free-O'-Frost takes the Amana automatic ice maker (optional at extra cost).



Amana. Refrigerators with freezer capacities up to 9.29 cubic feet also available. Pick the size you need today!

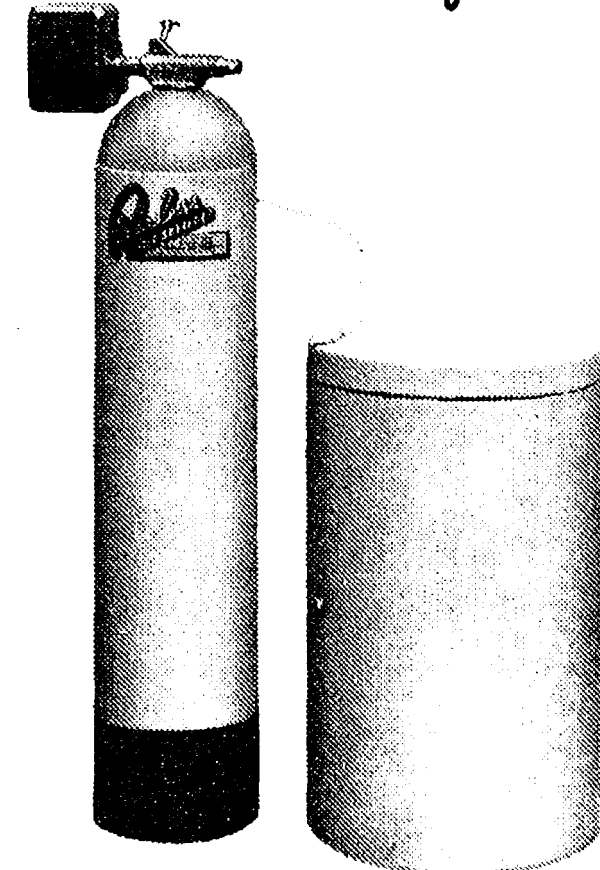
HEYDLAUFF'S

113 N. Main St., Chelsea

Ph. 475-1221

Treat Yourself To One of Life's Simple Pleasures . . . and Save Money!

PEERLESS
Water Softener



For an endless supply of sparkling soft water.

- ✓ Personal grooming is more pleasant.
- ✓ Housekeeping is less of a chore.
- ✓ Laundering clothes is simplified and improved.
- ✓ Better results in cooking and dishwashing.
- ✓ Plumbing equipment and home appliances last longer and function better.

CHELSEA PLUMBING & HEATING

PHONE 475-1037
SALES & SERVICE